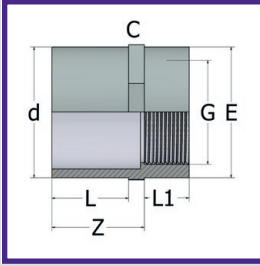
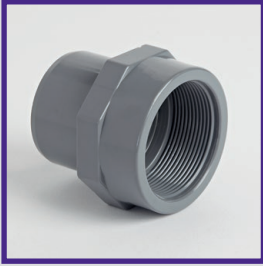


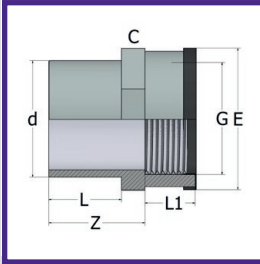
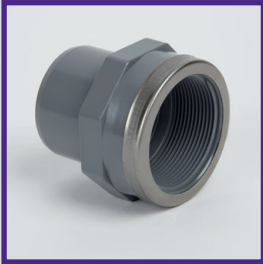
ABS PRESSURE FITTINGS PLAIN / THREADED (BSP)

ADAPTOR – MALE PLAIN / FEMALE THREADED



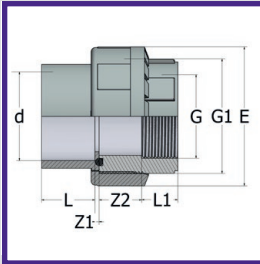
d x G	PART NO	L	L1	E	Z	C	Wt (g)	Box
1/2"	011.212.02	16	15	28	24	30	13	350
1/2" x 3/4"	011.212.0203	16	16.3	34	24	36	18	300
3/4" x 1/2"	011.212.0302	19	15	28	27	30	15	600
3/4"	011.212.03	19	16.3	34	27	36	19	550
3/4" x 1"	011.212.0304	19	19.1	42	27	46	30	350
1" x 3/4"	011.212.0403	22	16.3	34	30	36	21	450
1"	011.212.04	22	19.1	42	30	46	34	280
1 1/4" x 1"	011.212.0504	26	19.1	42	36	46	39	250
1 1/4"	011.212.05	26	21.4	51	36	55	52	180
1 1/2" x 1 1/4"	011.212.0605	31	21.4	51	41	55	48	140
1 1/2"	011.212.06	31	21.4	58	41	65	65	130
1 1/2" x 2"	011.212.0607	31	25.7	75	41	75	95	100
2" x 1 1/2"	011.212.0706	38	21.4	60	49	65	81	90
2"	011.212.07	38	25.7	75	48	75	108	70
2 1/2" x 2"	011.212.0807	44	25.7	75	53	75	120	55
2 1/2"	011.212.08	44	30.2	89	58	90	167	80
2 1/2" x 3"	011.212.0809	44	33.3	103	58	105	240	35
3" x 2 1/2"	011.212.0908	51	30.2	89	65	95	169	54
3"	011.212.09	51	33.3	103	66	105	222	55
3" x 4"	011.212.0910	51	39.3	130	65	130	333	35
4" x 3"	011.212.1009	61	33.3	103	76	130	454	35
4"	011.212.10	61	39.3	130	76	130	401	30

ADAPTOR – S/S REINFORCED – MALE PLAIN / FEMALE THREADED



d x G	PART NO	L	L1	E	Z	C	Wt (g)	Box
1/2"	011.372.02	16	15	29	24	30	19	400
3/4" x 1/2"	011.372.0302	19	15	29	27	30	19	350
3/4"	011.372.03	19	16.3	35	27	36	24	550
1" x 3/4"	011.372.0403	22	16.3	35	30	36	25	400
1"	011.372.04	22	19.1	43	30	46	38	280
1 1/4" x 1"	011.372.0504	26	19.1	43	36	46	50	250
1 1/4"	011.372.05	26	21.4	51.5	36	55	67	180
1 1/2" x 1 1/4"	011.372.0605	31	21.4	51.5	41	55	65	140
1 1/2"	011.372.06	31	21.4	61	41	60	73	110
2" x 1 1/2"	011.372.0706	38	21.4	61	48	75	105	90
2"	011.372.07	38	25.7	76	48	75	115	70

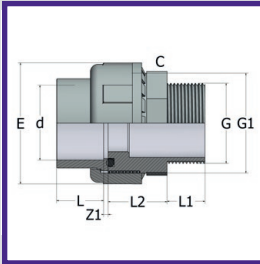
UNION



* PN10 RATED

d x G	PART NO	L	L1	Z1	Z2	G1	E	Wt (g)	Box
1/2"	011.022.02	16	15	3	11	1"	42	31	180
3/4"	011.022.03	19	16.3	3	12.7	1 1/4"	52	51	220
1"	011.022.04	22	19.1	3	12.9	1 1/2"	59	70	150
1 1/4"	011.022.05	26	21.4	3	16.6	2"	72	109	80
1 1/2"	011.022.06	31	21.4	3	23.6	2 1/4"	79	176	60
2"	011.022.07	38	25.7	3	30.3	2 3/4"	96	293	30
2 1/2"*	011.022.08	44	30.2	3	31.8	3 1/2"	119	470	35
3"*	011.022.09	51	33.3	5	35.7	4"	134	610	24
4"*	011.022.10	61	39.3	5	39.7	5"	163	970	12

UNION – MALE THREAD ONE END



d x G	PART NO	L	L1	L2	Z1	C	G1	E	Wt (g)	Box
1 1/2"	011.592.06	31	21.4	40	3	65	2 1/4"	79	188	50
1 1/2" x 2"	011.592.0607	31	25.7	40	3	65	2 1/4"	79	192	50
2"	011.592.07	38	25.7	42	3	70	2 3/4"	96	319	30

ABS

PVC IMPERIAL

PVC METRIC

POLYPROPYLENE

COMPRESSION FITTINGS

GUIDELINES