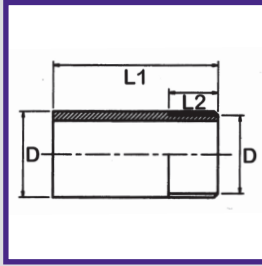


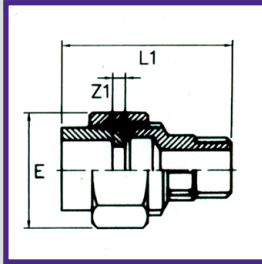
# ABS PRESSURE FITTINGS PLAIN / THREADED (BSP)

## NIPPLE



| D      | PART NO    | L2 | L1  | Wt (g) | Box |
|--------|------------|----|-----|--------|-----|
| 3/8"   | 011.252.01 | 13 | 42  | 8      | 100 |
| 1/2"   | 011.252.02 | 17 | 50  | 14     | 100 |
| 3/4"   | 011.252.03 | 19 | 56  | 25     | 100 |
| 1"     | 011.252.04 | 20 | 63  | 38     | 50  |
| 1 1/4" | 011.252.05 | 24 | 75  | 52     | 25  |
| 1 1/2" | 011.252.06 | 30 | 88  | 80     | 10  |
| 2"     | 011.252.07 | 32 | 88  | 115    | 10  |
| 2 1/2" | 011.252.08 | 33 | 106 | 197    | 10  |
| 3"     | 011.252.09 | 39 | 128 | 300    | 10  |
| 4"     | 011.252.10 | 40 | 153 | 560    | 10  |

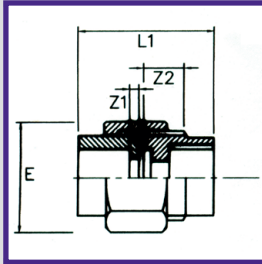
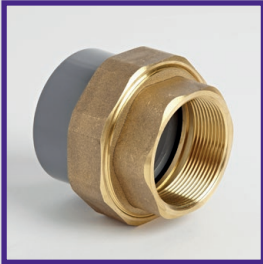
## COMPOSITE UNION – MALE BRASS



| SIZE   | PART NO    | E   | L1  | Z1 | Wt (g) |
|--------|------------|-----|-----|----|--------|
| 1/2"   | 011.762.02 | 44  | 56  | 3  | 175    |
| 3/4"   | 011.762.03 | 46  | 64  | 3  | 210    |
| 1"     | 011.762.04 | 55  | 68  | 9  | 318    |
| 1 1/4" | 011.762.05 | 65  | 84  | 10 | 435    |
| 1 1/2" | 011.762.06 | 72  | 86  | 12 | 516    |
| 2"     | 011.762.07 | 88  | 95  | 14 | 768    |
| 2 1/2" | 011.762.08 | 108 | 114 | 18 | 1400   |
| 3"     | 011.762.09 | 122 | 130 | 18 | 1860   |

PLEASE NOTE: FOR CONNECTING PLASTIC PIPEWORK SYSTEMS TO METAL PIPEWORK SYSTEMS COMPOSITE UNIONS AND/OR FLANGES MUST BE USED

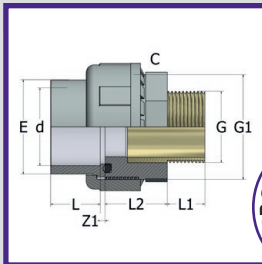
## COMPOSITE UNION – FEMALE BRASS



| SIZE   | PART NO    | E   | L1  | Z1 | Z2 | Wt (g) |
|--------|------------|-----|-----|----|----|--------|
| 1/2"   | 011.752.02 | 44  | 43  | 3  | 9  | 175    |
| 3/4"   | 011.752.03 | 46  | 48  | 3  | 10 | 186    |
| 1"     | 011.752.04 | 55  | 54  | 9  | 11 | 290    |
| 1 1/4" | 011.752.05 | 65  | 63  | 10 | 11 | 365    |
| 1 1/2" | 011.752.06 | 72  | 65  | 12 | 12 | 465    |
| 2"     | 011.752.07 | 88  | 78  | 14 | 14 | 680    |
| 2 1/2" | 011.752.08 | 108 | 87  | 14 | 18 | 1220   |
| 3"     | 011.752.09 | 122 | 105 | 16 | 18 | 1610   |

PLEASE NOTE: FOR CONNECTING PLASTIC PIPEWORK SYSTEMS TO METAL PIPEWORK SYSTEMS COMPOSITE UNIONS AND/OR FLANGES MUST BE USED

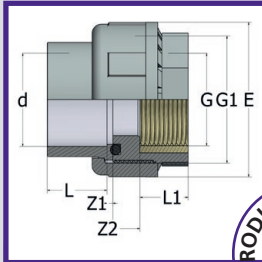
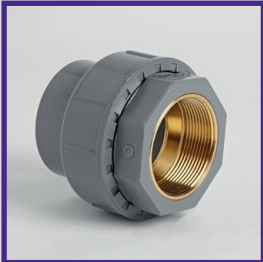
## COMPOSITE UNION – MALE BRASS WITH ABS NUT



| d x G  | PART NO    | L  | L1   | L2 | Z1 | C  | G1     | E  | O-R  | Wt (g) | Box |
|--------|------------|----|------|----|----|----|--------|----|------|--------|-----|
| 1 1/2" | 011.762.06 | 31 | 21,4 | 40 | 3  | 65 | 2 1/4" | 79 | 6187 | 341    | 30  |
| 2"     | 011.762.07 | 38 | 25,7 | 42 | 3  | 70 | 2 3/4" | 96 | 6237 | 535    | 12  |



## COMPOSITE UNION – FEMALE BRASS WITH ABS NUT



| d x G  | PART NO    | L  | L1   | L2 | Z1 | C    | G1     | E  | O-R  | Wt (g) | Box |
|--------|------------|----|------|----|----|------|--------|----|------|--------|-----|
| 1 1/2" | 011.752.06 | 31 | 21,4 | 40 | 3  | 55,4 | 2 1/4" | 79 | 6187 | 250    | 30  |
| 2"     | 011.752.07 | 38 | 25,7 | 42 | 3  | 66,7 | 2 3/4" | 96 | 6237 | 374    | 12  |



ABS

PVC IMPERIAL

PVC METRIC

POLYPROPYLENE

COMPRESSION FITTINGS

GUIDELINES