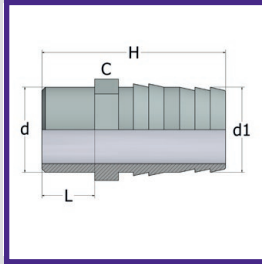


ABS PRESSURE FITTINGS PLAIN

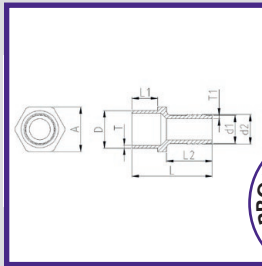
HOSE ADAPTOR – MALE SPIGOT x mm HOSE TAIL



d x d1	PART NO	d	d1	L	H	C	Wt (g)	Box
1/2" x 20	011.261.02020	1/2"	20	16	70	24	17	700
3/4" x 25	011.261.03025	3/4"	25	19	79	27	22	420
1" x 32	011.261.04032	1"	32	22	83	36	37	250
1 1/4" x 40	011.261.05040	1 1/4"	40	26	96	46	55	300
1 1/2" x 50	011.261.06050	1 1/2"	50	31	108	55	103	180
2" x 60	011.261.07060	2"	60	38	130	65	156	100

RANGE OF PP HOSE FITTINGS AVAILABLE SEE PAGE 175

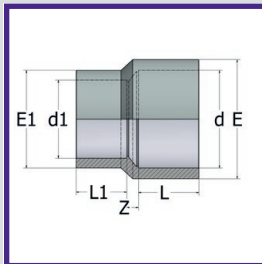
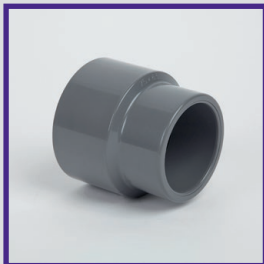
CHALLENGER HOSE ADAPTOR – MALE SPIGOT x mm HOSE TAIL



D x d2	PART NO	L	A	L1	L2	d1	d2	Wt (g)	Box
1/2" x 13	011.261.02013	63	25.5	16.5	40	12.7	13.8	12	1000
3/4" x 19	011.261.03019	68	35	19.5	40	18.5	20	20	1000
1" x 25	011.261.04025	72	40	22.5	41	25	26	39	500



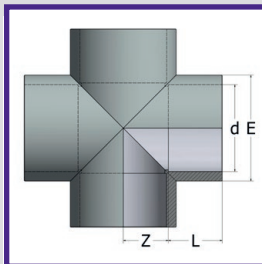
REDUCING SOCKET



d x d1	PART NO	L	L1	Z	E	E1	Wt (g)	Box
3/4" x 1/2"	011.601.0302	19	16	6	34	28	15	250
1" x 3/4"	011.601.0403	22	19	6	42	33	25	160
1 1/4" x 1"	011.601.0504	26	22	6	51	41	38	220
1 1/2" x 1 1/4"	011.601.0605	31	26	6	61	50	64	130
2" x 1 1/2"	011.601.0706	38	31	6	75	60.5	117	80
2 1/2" x 2"	011.601.0807	44	38	6	89	75	154	60
3" x 2 1/2"	011.601.0908	51	44	6	106	88	233	36
4" x 3"	011.601.1009	61	51	6	129	106	404	42
6" x 4"•*	011.601.1210	92	65	60	194	132	1282	8

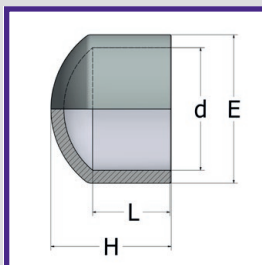
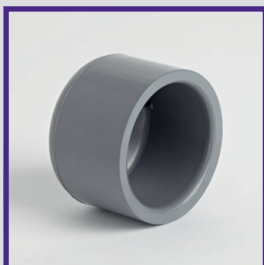
*MAY BE SUBJECT TO MINIMUM ORDER QUANTITIES
PLEASE CONTACT OUR SALES DEPT FOR DETAILS

CROSS



d	PART NO	L	Z	E	Wt (g)	Box
1/2"	011.191.02	16	11	27.5	20	200
3/4"	011.191.03	19	14	33.5	32	100
1"	011.191.04	22	17	42	56	50
1 1/4"	011.191.05	26	21	51	88	60
1 1/2"	011.191.06	31	26	61	180	35
2"	011.191.07	38	33	75	318	20

CAP



d	PART NO	L	H	E	Wt (g)	Box
1/2"	011.221.02	16	27	28	8	750
3/4"	011.221.03	19	31	33	12	400
1"	011.221.04	22	36	41	20	450
1 1/4"	011.221.05	26	43	50	30	300
1 1/2"	011.221.06	31	49	60.5	55	180
2"	011.221.07	38	57	75	96	100
2 1/2"	011.221.08	44	67	89	133	60
3"	011.221.09	51	80	106	228	65
4"	011.221.10	61	95	132	390	40
5"	011.221.11	76	114	161	713	20
6"	011.221.12	88	126	190	990	14
8"	011.221.13	119	145	258	2615	6

ABS

PVC IMPERIAL

PVC METRIC

POLYPROPYLENE

COMPRESSION FITTINGS

GUIDELINES