



Range Guide

Lightweight cost effective pipework system.

POOLS & SPAS | FOOD & BEVERAGE | IRRIGATION | AQUACULTURE | WATER TREATMENT

ABS

Pipework System

ABS Typical applications

Water treatment, Waste water, Potable water, Process water, Chilled water, Agriculture, Horticulture & Food and Beverage production

Imperial size range

1/2" to 8"

Temperature

-40°C to 60°C

Pressure rating

Up to Class E

PVC-U

Pipework System

PVC-U Typical applications

Water treatment, Waste water, Agriculture, Horticulture, Swimming pools, Irrigation, Chemical processing

Imperial size range

1/2" to 12"

Metric size range

16mm to 315mm

Temperature

0°C to 60°C

Pressure rating

Up to Class E



Valves

Available in ABS and PVC-U

Complete range of manual and actuated ball and butterfly valves

- Ball valves
- Butterfly valves
- Check valves/Non Return valves
- Air release valve

Available with Electric or Pneumatic actuation.

Available in Metric and Imperial PVC-U and Imperial ABS to suit pipe ranges.



Fittings

- Wide range of fittings available
- Polypropylene material
- Fittings for PE metric pipelines
- Compression, clamps, saddles, connectors
- Metric, Inch/Metric

Size range

16mm to 110mm

Pressure rating

PN16



INDEX

Astore UK reserves the right to modify the details in this publication as products and specifications are updated and improved.

The content of this publication is for general information only and it is the user's responsibility to determine the suitability of any product for the purpose intended.

4 PVC-U & ABS IMPERIAL

- 4 Pipes - PVC-U Premium & Optima
- 5 Pipes - ABS
- 6-10 Fittings
- 11-12 Flanges
- 13 Pipe Brackets & Tools
- 13 Accessories

23 VALVES

- 23-28 Valves

14 PVC-U METRIC/IMPERIAL

- 14 Pipes - PVC-U Premium & Optima
- 15-20 Fittings
- 21 Flanges
- 22 Pipe Brackets & Tools
- 22 Accessories

29 CLAMP SADDLES & FITTINGS

- 29-30 Clamp Saddles
- 31-33 Compression Fittings

PVC-U Pipes

Imperial

PVC Pipes available in 5 metre lengths.

PREMIUM PVC-U PIPE (Fully Approved)

✓ 2 1/2" PVC-U Pipe is available as 75mm in the metric range.



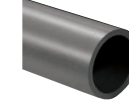
PREMIUM PVC-U PIPE CLASS C

| Size | CODE PVC-U |
|------|------------|
| 2" | R PRC.0630 |
| 3" | R PRC.0900 |
| 4" | R PRC.1100 |
| 5" | R PRC.1400 |
| 6" | R PRC.1600 |
| 8" | R PRC.2250 |

PREMIUM PVC-U PIPE CLASS D

| Size | CODE PVC-U |
|--------|------------|
| 1 1/4" | R PRD.0400 |
| 1 1/2" | R PRD.0500 |
| 2" | R PRD.0630 |
| 3" | R PRD.0900 |
| 4" | R PRD.1100 |
| 6" | R PRD.1600 |
| 8" | R PRD.2250 |

Optima branded (non-DWI approved pipe)



OPTIMA PIPE PVC-U CLASS C

| Size | CODE PVC-U |
|------|------------|
| 2" | R MRC.0630 |
| 3" | R MRC.0900 |
| 4" | R MRC.1100 |
| 5" | R MRC.1400 |
| 6" | R MRC.1600 |

OPTIMA PIPE PVC-U CLASS E

| Size | CODE PVC-U |
|--------|------------|
| 1/2" | R MRE.0200 |
| 3/4" | R MRE.0250 |
| 1" | R MRE.0320 |
| 1 1/4" | R MRE.0400 |
| 1 1/2" | R MRE.0500 |
| 2" | R MRE.0630 |
| 3" | R MRE.0900 |
| 4" | R MRE.1100 |
| 6" | R MRE.1600 |
| 10" | R PRE.2800 |
| 12" | R PRE.3150 |



PREMIUM PVC-U PIPE CLASS E

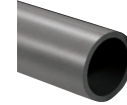
| Size | CODE PVC-U |
|--------|------------|
| 1/2" | R PRE.0200 |
| 3/4" | R PRE.0250 |
| 1" | R PRE.0320 |
| 1 1/4" | R PRE.0400 |
| 1 1/2" | R PRE.0500 |
| 2" | R PRE.0630 |
| 3" | R PRE.0900 |
| 4" | R PRE.1100 |
| 6" | R PRE.1600 |

PREMIUM PVC-U PIPE CLASS 7

| Size | CODE PVC-U |
|--------|------------|
| 1/2" | R PR7.0200 |
| 3/4" | R PR7.0250 |
| 1" | R PR7.0320 |
| 1 1/4" | R PR7.0400 |
| 1 1/2" | R PR7.0500 |
| 2" | R PR7.0630 |

ABS Pipes

Imperial



ABS PRESSURE PIPE CLASS C

| Size | CODE ABS |
|--------|-------------|
| 1" | S PAC.032A |
| 1 1/4" | S PAC.040A |
| 1 1/2" | S PAC.050A |
| 2" | S PAC.063A |
| 2 1/2" | S PAC.075A |
| 3" | S PAC.090A |
| 4" | S PAC.110A |
| 5" | S PAC.140A |
| 6" | S PAC.160A |
| 8" | S PAC.225A |

ABS PRESSURE PIPE CLASS D

| Size | CODE ABS |
|------|-------------|
| 6" | S PAD.160A |

ABS PRESSURE PIPE CLASS E

| Size | CODE ABS |
|--------|-------------|
| 1/2" | S PAE.020A |
| 3/4" | S PAE.025A |
| 1" | S PAE.032A |
| 1 1/4" | S PAE.040A |
| 1 1/2" | S PAE.050A |
| 2" | S PAE.063A |
| 3" | S PAE.090A |
| 4" | S PAE.110A |

ABS Pipes available in 6 metre lengths.

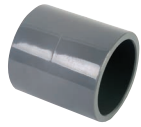
ABS PRESSURE PIPE CLASS T

| Size | CODE ABS |
|--------|-------------|
| 1/2" | S PAT.020A |
| 3/4" | S PAT.025A |
| 1" | S PAT.032A |
| 1 1/4" | S PAT.040A |
| 1 1/2" | S PAT.050A |
| 2" | S PAT.063A |

Class T for threading.

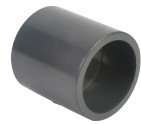
Fittings

Imperial



SOCKET PLAIN

| Size | CODE PVC-U | CODE ABS | |
|--------|---------------|-------------|-----|
| 1/2" | R MA4.0200 | S MA4.0200 | |
| 3/4" | R MA4.0250 | S MA4.0250 | |
| 1" | R MA4.0320 | S MA4.0320 | |
| 1 1/4" | R MA4.0400 | S MA4.0400 | |
| 1 1/2" | R MA4.0500 | S MA4.0500 | |
| 2" | R MA4.0630 | S MA4.0630 | |
| 2 1/2" | R MA1.0750 | S MA4.0750 | |
| 3" | R MA4.0900 | S MA4.0900 | |
| 4" | R MA4.1100 | S MA4.1100 | |
| 5" | R MA1.1400 | S MA4.1400 | |
| 6" | R MA4.1600 | S MA4.1600 | |
| 8" | R MA4.2250 | S MA4.2250 | |
| 10" | R MA4.2800 | - | MTO |
| 12" | R MA4.3150 | - | MTO |



INCH/METRIC SOCKET PLAIN

| Size | CODE PVC-U | CODE ABS |
|---------------|---------------|-------------|
| 1/2" x 20mm | R MA5.0200 | S MA5.0200 |
| 3/4" x 25mm | R MA5.0250 | S MA5.0250 |
| 1" x 32mm | R MA5.0320 | S MA5.0320 |
| 1 1/4" x 40mm | R MA5.0400 | S MA5.0400 |
| 1 1/2" x 50mm | R MA5.0500 | S MA5.0500 |
| 2" x 63mm | R MA5.0630 | S MA5.0630 |
| 3" x 90mm | R MA5.0900 | S MA5.0900 |
| 4" x 110mm | R MA5.1100 | S MA5.1100 |



ELBOW 90° PLAIN

| Size | CODE PVC-U | CODE ABS | |
|--------|---------------|-------------|-----|
| 1/2" | R GO4.0200 | S GO4.0200 | |
| 3/4" | R GO4.0250 | S GO4.0250 | |
| 1" | R GO4.0320 | S GO4.0320 | |
| 1 1/4" | R GO4.0400 | S GO4.0400 | |
| 1 1/2" | R GO4.0500 | S GO4.0500 | |
| 2" | R GO4.0630 | S GO4.0630 | |
| 2 1/2" | R GO1.0750 | S GO4.0750 | |
| 4" | R GO4.1100 | S GO4.1100 | |
| 5" | R GO1.1400 | S GO4.1400 | |
| 6" | R GO4.1600 | S GO4.1600 | |
| 8" | R GO4.2250 | S GO4.2250 | |
| 10" | R GO4.2800 | - | MTO |
| 12" | R GO4.3150 | - | MTO |



TEE 90° PLAIN

| Size | CODE PVC-U | CODE ABS | |
|--------|---------------|-------------|-----|
| 1/2" | R TI4.0200 | S TI4.0200 | |
| 3/4" | R TI4.0250 | S TI4.0250 | |
| 1" | R TI4.0320 | S TI4.0320 | |
| 1 1/4" | R TI4.0400 | S TI4.0400 | |
| 1 1/2" | R TI4.0500 | S TI4.0500 | |
| 2" | R TI4.0630 | S TI4.0630 | |
| 2 1/2" | R TI1.0750 | S TI4.0750 | |
| 3" | R TI4.0900 | S TI4.0900 | |
| 4" | R TI4.1100 | S TI4.1100 | |
| 5" | R TI1.1400 | S TI4.1400 | |
| 6" | R TI4.1600 | S TI4.1600 | |
| 8" | R TI4.2250 | S TI4.2250 | |
| 10" | R TI4.2800 | - | MTO |
| 12" | R TI4.3150 | - | MTO |



ELBOW 45° PLAIN

| Size | CODE PVC-U | CODE ABS | |
|--------|---------------|-------------|-----|
| 1/2" | R GY4.0200 | S GY4.0200 | |
| 3/4" | R GY4.0250 | S GY4.0250 | |
| 1" | R GY4.0320 | S GY4.0320 | |
| 1 1/4" | R GY4.0400 | S GY4.0400 | |
| 1 1/2" | R GY4.0500 | S GY4.0500 | |
| 2" | R GY4.0630 | S GY4.0630 | |
| 2 1/2" | R GY1.0750 | S GY4.0750 | |
| 3" | R GY4.0900 | S GY4.0900 | |
| 4" | R GY4.1100 | S GY4.1100 | |
| 5" | R GY1.1400 | S GY4.1400 | |
| 6" | R GY4.1600 | S GY4.1600 | |
| 8" | R GY4.2250 | S GY4.2250 | |
| 10" | R GY4.2800 | - | MTO |
| 12" | R GY4.3150 | - | MTO |



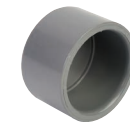
UNION PLAIN

| Size | CODE PVC-U | CODE ABS |
|--------|---------------|-------------|
| 1/2" | R BO4.0200 | S BO4.0200 |
| 3/4" | R BO4.0250 | S BO4.0250 |
| 1" | R BO4.0320 | S BO4.0320 |
| 1 1/4" | R BO4.0400 | S BO4.0400 |
| 1 1/2" | R BO4.0500 | S BO4.0500 |
| 2" | R BO4.0630 | S BO4.0630 |
| 2 1/2" | R BO1.0750 | S BO4.0750 |
| 3" | R BO4.0900 | S BO4.0900 |
| 4" | R BO4.1100 | S BO4.1100 |



BEND 90° PLAIN

| Size | CODE PVC-U | CODE ABS |
|--------|---------------|-------------|
| 1/2" | R CU4.0200 | S CU4.0200 |
| 3/4" | R CU4.0250 | S CU4.0250 |
| 1" | R CU4.0320 | S CU4.0320 |
| 1 1/4" | R CU4.0400 | S CU4.0400 |
| 1 1/2" | R CU4.0500 | S CU4.0500 |
| 2" | R CU4.0630 | S CU4.0630 |
| 2 1/2" | R CU1.0750 | S CU4.0750 |
| 3" | R CU4.0900 | S CU4.0900 |
| 4" | R CU4.1100 | S CU4.1100 |



END CAP PLAIN

| Size | CODE PVC-U | CODE ABS |
|--------|---------------|-------------|
| 1/2" | R CA4.0200 | S CA4.0200 |
| 3/4" | R CA4.0250 | S CA4.0250 |
| 1" | R CA4.0320 | S CA4.0320 |
| 1 1/4" | R CA4.0400 | S CA4.0400 |
| 1 1/2" | R CA4.0500 | S CA4.0500 |
| 2" | R CA4.0630 | S CA4.0630 |
| 2 1/2" | R CA1.0750 | S CA4.0750 |
| 3" | R CA4.0900 | S CA4.0900 |
| 4" | R CA4.1100 | S CA4.1100 |
| 5" | R CA1.1400 | - |
| 6" | R CA4.1600 | - |

Fittings

Imperial



REDUCING BUSH PLAIN

| Size | CODE PVC-U | CODE ABS | |
|-----------------|---------------|-------------|-----|
| 3/4" x 1/2" | R RC4.025B | S RC4.025B | |
| 1" x 1/2" | R RC4.032B | S RC4.032B | |
| 1" x 3/4" | R RC4.032C | S RC4.032C | |
| 1 1/4" x 1" | R RC4.040D | S RC4.040D | |
| 1 1/2" x 3/4" | R RC4.050C | S RC4.050C | |
| 1 1/2" x 1" | R RC4.050D | S RC4.050D | |
| 1 1/2" x 1 1/4" | R RC4.050E | S RC4.050E | |
| 2" x 1" | R RC4.063D | S RC4.063D | |
| 2" x 1 1/4" | R RC4.063E | S RC4.063E | |
| 2" x 1 1/2" | R RC4.063F | S RC4.063F | |
| 2 1/2" x 2" | R RC4.075G | S RC4.075G | |
| 3" x 1 1/2" | R RC4.090F | S RC4.090F | |
| 3" x 2" | R RC4.090G | S RC4.090G | |
| 3" x 2 1/2" | R RC4.090H | S RC4.090H | |
| 4" x 2" | R RC4.110G | S RC4.110G | |
| 4" x 3" | R RC4.110I | S RC4.110I | |
| 5" x 4" | R RC4.140L | S RC4.140L | |
| 6" x 4" | R RC4.160L | S RC4.160L | |
| 8" x 6" | R RC4.225O | S RC4.225O | |
| 10" x 8" | R RC4.280R | - | MTO |
| 12" x 10" | R RC4.315S | - | MTO |



SOCKET PLAIN/THREADED

| Size | CODE PVC-U | CODE ABS |
|--------|---------------|-------------|
| 1/2" | R MA6.0200 | S MA6.0200 |
| 3/4" | R MA6.0250 | S MA6.0250 |
| 1" | R MA6.0320 | S MA6.0320 |
| 1 1/4" | R MA6.0400 | S MA6.0400 |
| 1 1/2" | R MA6.0500 | S MA6.0500 |
| 2" | R MA6.0630 | S MA6.0630 |
| 2 1/2" | R MA3.0750H | - |
| 3" | R MA6.0900 | - |
| 4" | R MA6.1100 | - |



BEND LONG RADIUS 90 DEGREE

| Size | CODE PVC-U | CODE ABS | |
|------|---------------|-------------|-----|
| 3" | R LU4.0900 | S LU4.0900 | MTO |
| 4" | R LU4.1100 | S LU4.1100 | MTO |
| 6" | R LU4.1600 | S LU4.1600 | MTO |

N.B. Accessory discount applies to this item



ELBOW 90° PLAIN/THREADED

| Size | CODE PVC-U | CODE ABS |
|--------|---------------|-------------|
| 1/2" | R GO6.0200 | S GO6.0200 |
| 3/4" | R GO6.0250 | S GO6.0250 |
| 1" | R GO6.0320 | S GO6.0320 |
| 1 1/4" | R GO6.0400 | S GO6.0400 |
| 1 1/2" | R GO6.0500 | S GO6.0500 |
| 2" | R GO6.0630 | S GO6.0630 |
| 2 1/2" | R GO3.075H | - |
| 3" | R GO6.0900 | - |



LONG RADIUS 45 DEGREE

| Size | CODE PVC-U | CODE ABS | |
|--------|---------------|-------------|-----|
| 1 1/2" | - | S LY4.0500 | MTO |
| 2" | R LY4.0630 | S LY4.0630 | MTO |
| 3" | R LY4.0900 | S LY4.0900 | MTO |
| 4" | R LY4.1100 | S LY4.1100 | MTO |

N.B. Accessory discount applies to this item



TEE PLAIN/THREADED BRANCH

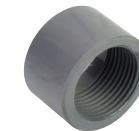
| Size | CODE PVC-U |
|--------|---------------|
| 1/2" | R TI6.0200 |
| 3/4" | R TI6.0250 |
| 1" | R TI6.0320 |
| 1 1/4" | R TI6.0400 |
| 1 1/2" | R TI6.0500 |
| 2" | R TI6.0630 |



BEND LONG RADIUS 22 1/2 DEGREE

| Size | CODE PVC-U | CODE ABS | |
|--------|---------------|-------------|-----|
| 1 1/2" | R LT4.0500 | S LT4.0500 | MTO |
| 2" | R LT4.0630 | S LT4.0630 | MTO |
| 3" | R LT4.0900 | S LT4.0900 | MTO |
| 4" | R LT4.1100 | S LT4.1100 | MTO |
| 6" | R LT4.1600 | S LT4.1600 | MTO |

N.B. Accessory discount applies to this item



REDUCING BUSH PLAIN/THREADED

| Size | CODE PVC-U | CODE ABS |
|-------------|---------------|-------------|
| 1/2" x 3/8" | R RC6.020A | S RC6.020A |
| 3/4" x 1/2" | R RC6.025B | S RC6.025B |
| 1" x 3/4" | R RC6.032C | S RC6.032C |

Fittings

Imperial



ADAPTOR MALE PLAIN/FEMALE THREADED

| Size | CODE PVC-U | CODE ABS |
|--------|---------------|-------------|
| 1/2" | R AF6.0200 | S AF6.0200 |
| 3/4" | R AF6.0250 | S AF6.0250 |
| 1" | R AF6.0320 | S AF6.0320 |
| 1 1/4" | R AF6.0400 | S AF6.0400 |
| 1 1/2" | R AF6.0500 | S AF6.0500 |
| 2" | R AF6.0630 | S AF6.0630 |



ADAPTOR FEMALE PLAIN/MALE THREADED

| Size | CODE PVC-U | CODE ABS |
|--------|---------------|-------------|
| 1/2" | R AM6.0200 | S AM6.0200 |
| 3/4" | R AM6.0250 | S AM6.0250 |
| 1" | R AM6.0320 | S AM6.0320 |
| 1 1/4" | R AM6.0400 | S AM6.0400 |
| 1 1/2" | R AM6.0500 | S AM6.0500 |
| 2" | R AM6.0630 | S AM6.0630 |
| 2 1/2" | R AM3.0750H | - |
| 3" | R AM6.0900 | - |



TANK CONNECTOR PLAIN/THREADED

| Size | CODE PVC-U | CODE ABS |
|--------|---------------|-------------|
| 1/2" | R TC6.0200 | S TC6.0200 |
| 3/4" | R TC6.0250 | S TC6.0250 |
| 1" | R TC6.0320 | S TC6.0320 |
| 1 1/4" | R TC6.0400 | S TC6.0400 |
| 1 1/2" | R TC6.0500 | S TC6.0500 |
| 2" | R TC6.0630 | S TC6.0630 |
| 2 1/2" | R TC6.0750 | S TC6.0750 |
| 3" | R TC6.0900 | S TC6.0900 |
| 4" | R TC6.1100 | S TC6.1100 |



COMPOSITE UNION MALE BSP BRASS

| Size | CODE PVC-U | CODE ABS |
|--------|---------------|-------------|
| 1/2" | R MB6.0200 | S MB6.0200 |
| 3/4" | R MB6.0250 | S MB6.0250 |
| 1" | R MB6.0320 | S MB6.0320 |
| 1 1/4" | R MB6.0400 | S MB6.0400 |
| 1 1/2" | R MB6.0500 | S MB6.0500 |
| 2" | R MB6.0630 | S MB6.0630 |

N.B. Accessory discount applies to this item



UNION PLAIN/THREADED

| Size | CODE PVC-U |
|--------|---------------|
| 1/2" | R BO6.0200 |
| 3/4" | R BO6.0250 |
| 1" | R BO6.0320 |
| 1 1/4" | R BO6.0400 |
| 1 1/2" | R BO6.0500 |
| 2" | R BO6.0630 |



BARREL NIPPLE PLAIN/THREADED

| Size | CODE PVC-U | CODE ABS |
|--------|---------------|-------------|
| 3/8" | R BN6.0160 | - |
| 1/2" | R BN6.0200 | S BN6.0200 |
| 3/4" | R BN6.0250 | S BN6.0250 |
| 1" | R BN6.0320 | S BN6.0320 |
| 1 1/4" | R BN6.0400 | S BN6.0400 |
| 1 1/2" | R BN6.0500 | S BN6.0500 |
| 2" | R BN6.0630 | S BN6.0630 |
| 2 1/2" | R BN6.0750 | S BN6.0750 |
| 3" | R BN6.0900 | S BN6.0900 |
| 4" | R BN6.1100 | S BN6.1100 |



COMPOSITE UNION FEMALE BSP BRASS

| Size | CODE PVC-U | CODE ABS |
|--------|---------------|-------------|
| 1/2" | R FB6.0200 | S FB6.0200 |
| 3/4" | R FB6.0250 | S FB6.0250 |
| 1" | R FB6.0320 | S FB6.0320 |
| 1 1/4" | R FB6.0400 | S FB6.0400 |
| 1 1/2" | R FB6.0500 | S FB6.0500 |
| 2" | R FB6.0630 | S FB6.0630 |

N.B. Accessory discount applies to this item



HOSE ADAPTOR BSP THREADED/METRIC

| Size | CODE PVC-U |
|--------|---------------|
| 3/8" | R PO3.016A |
| 1/2" | R PO3.020B |
| 3/4" | R PO3.025C |
| 1" | R PO3.032D |
| 1 1/4" | R PO3.040E |
| 1 1/2" | R PO3.050F |
| 2" | R PO3.063G |

Fittings

Imperial



SOCKET THREADED

| Size | CODE PVC-U |
|--------|---------------|
| 3/8" | R MA2.0160 |
| 1/2" | R MA2.0200 |
| 3/4" | R MA2.0250 |
| 1" | R MA2.0320 |
| 1 1/4" | R MA2.0400 |
| 1 1/2" | R MA2.0500 |
| 2" | R MA2.0630 |
| 2 1/2" | R MA2.0750 |
| 3" | R MA2.0900 |
| 4" | R MA2.1100 |



ELBOW 90° THREADED

| Size | CODE PVC-U |
|--------|---------------|
| 3/8" | R GO2.0160 |
| 1/2" | R GO2.0200 |
| 3/4" | R GO2.0250 |
| 1" | R GO2.0320 |
| 1 1/4" | R GO2.0400 |
| 1 1/2" | R GO2.0500 |
| 2" | R GO2.0630 |
| 2 1/2" | R GO2.0750 |
| 3" | R GO2.0900 |
| 4" | R GO2.1100 |



TEE THREADED

| Size | CODE PVC-U |
|--------|---------------|
| 3/8" | R TI2.0160 |
| 1/2" | R TI2.0200 |
| 3/4" | R TI2.0250 |
| 1" | R TI2.0320 |
| 1 1/4" | R TI2.0400 |
| 1 1/2" | R TI2.0500 |
| 2" | R TI2.0630 |
| 2 1/2" | R TI2.0750 |
| 3" | R TI2.0900 |
| 4" | R TI2.1100 |



PLUG THREADED

| Size | CODE PVC-U |
|--------|---------------|
| 3/8" | R TA2.0160 |
| 1/2" | R TA2.0200 |
| 3/4" | R TA2.0250 |
| 1" | R TA2.0320 |
| 1 1/4" | R TA2.0400 |
| 1 1/2" | R TA2.0500 |
| 2" | R TA2.0630 |
| 2 1/2" | R TA2.0750 |
| 3" | R TA2.0900 |
| 4" | R TA2.1100 |



HEXAGON NIPPLE THREADED

| Size | CODE PVC-U |
|--------|---------------|
| 3/8" | R NI2.0160 |
| 1/2" | R NI2.0200 |
| 3/4" | R NI2.0250 |
| 1" | R NI2.0320 |
| 1 1/4" | R NI2.0400 |
| 1 1/2" | R NI2.0500 |
| 2" | R NI2.0630 |
| 2 1/2" | R NI2.0750 |
| 3" | R NI2.0900 |
| 4" | R NI2.1100 |



REDUCING NIPPLE THREADED

| Size | CODE PVC-U |
|-----------------|---------------|
| 1/2" x 3/8" | R NR2.020A |
| 3/4" x 1/2" | R NR2.025B |
| 1" x 3/4" | R NR2.032C |
| 1 1/4" x 1" | R NR2.040D |
| 1 1/2" x 1 1/4" | R NR2.050E |
| 2" x 1 1/2" | R NR2.063F |
| 2 1/2" x 2" | R NR2.075G |
| 3" x 2 1/2" | R NR2.090H |
| 4" x 3" | R NR2.110I |



REDUCING PIECE FEMALE THREADED/MALE THREADED

| Size | CODE PVC-U |
|-----------------|---------------|
| 1/2" x 3/8" | R MG2.016B |
| 3/4" x 1/2" | R MG2.020C |
| 1" x 3/4" | R MG2.025D |
| 1 1/4" x 1" | R MG2.032E |
| 1 1/2" x 1 1/4" | R MG2.040F |
| 2" x 1 1/2" | R MG2.050G |
| 2 1/2" x 2" | R MG2.063H |
| 3" x 2 1/2" | R MG2.075I |
| 4" x 3" | R MG2.090L |

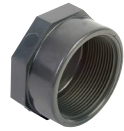
Fittings

Imperial



REDUCING PIECE FEMALE THREADED

| Size | CODE PVC-U |
|-----------------|------------|
| 1/2" x 3/8" | R MR2.020A |
| 3/4" x 1/2" | R MR2.025B |
| 1" x 3/4" | R MR2.032C |
| 1/4" x 1" | R MR2.040D |
| 1 1/2" x 1 1/4" | R MR2.050E |
| 2" x 1 1/2" | R MR2.063F |
| 2 1/2" x 2" | R MR2.075G |
| 3" x 2 1/2" | R MR2.090H |
| 4" x 3" | R MR2.110I |



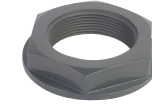
END CAP THREADED

| Size | CODE PVC-U |
|--------|------------|
| 1/2" | R CA2.0200 |
| 3/4" | R CA2.0250 |
| 1" | R CA2.0320 |
| 1 1/4" | R CA2.0400 |
| 1 1/2" | R CA2.0500 |
| 2" | R CA2.0630 |
| 2 1/2" | R CA2.0750 |
| 3" | R CA2.0900 |
| 4" | R CA2.1100 |



UNION THREADED

| Size | CODE PVC-U |
|--------|------------|
| 1/2" | R BO2.0200 |
| 3/4" | R BO2.0250 |
| 1" | R BO2.0320 |
| 1 1/4" | R BO2.0400 |
| 1 1/2" | R BO2.0500 |
| 2" | R BO2.0630 |
| 2 1/2" | R BO2.0750 |
| 3" | R BO2.0900 |
| 4" | R BO2.1100 |



BACK NUT THREADED

| Size | CODE PVC-U | CODE ABS |
|--------|------------|------------|
| 1/2" | R NU2.0200 | S NU2.0200 |
| 3/4" | R NU2.0250 | S NU2.0250 |
| 1" | R NU2.0320 | S NU2.0320 |
| 1 1/4" | R NU2.0400 | S NU2.0400 |
| 1 1/2" | R NU2.0500 | S NU2.0500 |
| 2" | R NU2.0630 | S NU2.0630 |
| 2 1/2" | R NU2.0750 | S NU2.075N |
| 3" | R NU2.090N | S NU2.090N |
| 4" | R NU2.110N | S NU2.110N |



BARREL NIPPLE THREADED / THREADED

| Size | CODE PVC-U | CODE ABS |
|--------|------------|------------|
| 3/8" | R BA2.0160 | - |
| 1/2" | R BA2.0200 | S BA2.0200 |
| 3/4" | R BA2.0250 | S BA2.0250 |
| 1" | R BA2.0320 | S BA2.0320 |
| 1 1/4" | R BA2.0400 | S BA2.0400 |
| 1 1/2" | R BA2.0500 | S BA2.0500 |
| 2" | R BA2.0630 | S BA2.0630 |
| 2 1/2" | R BA2.0750 | S BA2.0750 |
| 3" | R BA2.0900 | S BA2.0900 |
| 4" | R BA2.1100 | S BA2.1100 |



REDUCING PIECE MALE THREADED / FEMALE THREADED

| Size | CODE PVC-U |
|-----------------|------------|
| 1/2" x 3/8" | R RI2.020A |
| 3/4" x 1/2" | R RI2.025B |
| 1" x 1/2" | R RI2.032B |
| 1" x 3/4" | R RI2.032C |
| 1 1/4" x 1/2" | R RI2.040B |
| 1 1/4" x 3/4" | R RI2.040C |
| 1 1/4" x 1" | R RI2.040D |
| 1 1/2" x 3/4" | R RI2.050C |
| 1 1/2" x 1" | R RI2.050D |
| 1 1/2" x 1 1/4" | R RI2.050E |
| 2" x 1" | R RI2.063D |
| 2" x 1 1/4" | R RI2.063E |
| 2" x 1 1/2" | R RI2.063F |
| 2 1/2" x 1 1/4" | R RI2.075E |
| 2 1/2" x 1 1/2" | R RI2.075F |
| 2 1/2" x 2" | R RI2.075G |
| 3" x 1 1/2" | R RI2.090F |
| 3" x 2" | R RI2.090G |
| 3" x 2 1/2" | R RI2.090H |
| 4" x 2" | R RI2.110G |
| 4" x 2 1/2" | R RI2.110H |
| 4" x 3" | R RI2.110I |



ELBOW 45° THREADED

| Size | CODE PVC-U |
|--------|------------|
| 1/2" | R GY2.0200 |
| 3/4" | R GY2.0250 |
| 1" | R GY2.0320 |
| 1 1/4" | R GY2.0400 |
| 1 1/2" | R GY2.0500 |
| 2" | R GY2.0630 |
| 2 1/2" | R GY2.0750 |
| 3" | R GY2.0900 |
| 4" | R GY2.1100 |

Flanges

Imperial



FULL FACE PLAIN DRILLED BS10 TABLE E

| Size | CODE PVC-U | CODE ABS |
|--------|---------------|-------------|
| 1/2" | R FF4.0200 | S FF4.0200 |
| 3/4" | R FF4.0250 | S FF4.0250 |
| 1" | R FF4.0320 | S FF4.0320 |
| 1 1/4" | R FF4.0400 | S FF4.0400 |
| 1 1/2" | R FF4.0500 | S FF4.0500 |
| 2" | R FF4.0630 | S FF4.0630 |
| 3" | R FF4.0900 | S FF4.0900 |
| 4"E | R FF4.110E | S FF4.110E |



BLANK FLANGE DRILLED PN16

| Size | CODE PVC-U | CODE ABS |
|--------|---------------|-------------|
| 1/2" | R FCN.0200 | - |
| 3/4" | R FCN.0250 | - |
| 1" | R FCN.0320 | - |
| 1 1/2" | R FCN.0500 | - |
| 2" | R FCN.0630 | S FCN.0630 |
| 3" | R FCN.0900 | S FCN.0900 |
| 4" | R FCN.1100 | S FCN.1100 |
| 6" | R FCN.1600 | S FCN.1600 |

N.B. Accessory discount applies to this item



FULL FACE FLANGE PN16

| Size | CODE PVC-U | CODE ABS |
|--------|---------------|-------------|
| 1/2" | R FFN.0200 | S FFN.0200 |
| 3/4" | R FFN.0250 | S FFN.0250 |
| 1" | R FFN.0320 | S FFN.0320 |
| 1 1/4" | R FFN.0400 | S FFN.0400 |
| 1 1/2" | R FFN.0500 | S FFN.0500 |
| 2" | R FFN.0630 | S FFN.0630 |
| 2 1/2" | R FFN.0750 | S FFN.0750 |
| 3" | R FFN.0900 | S FFN.0900 |
| 4" | R FFN.1100 | S FFN.1100 |



BLANK FLANGE UNDRILLED

| Size | CODE PVC-U | CODE ABS |
|--------|---------------|-------------|
| 1/2" | R FCP.0200 | - |
| 3/4" | R FCP.0250 | - |
| 1" | R FCP.0320 | S FCP.0320 |
| 1 1/2" | R FCP.0500 | S FCP.0500 |
| 2" | R FCP.0630 | S FCP.0630 |
| 3" | R FCP.0900 | S FCP.0900 |
| 4" | R FCP.1100 | S FCP.1100 |
| 6" | R FCP.1600 | S FCP.1600 |

N.B. Accessory discount applies to this item



STUB FLANGE SERRATED FACE

| Size | CODE PVC-U | CODE ABS |
|--------|---------------|-------------|
| 1/2" | R QR4.0200 | - |
| 3/4" | R QR4.0250 | - |
| 1" | R QR4.0320 | - |
| 1 1/4" | R QR4.0400 | - |
| 1 1/2" | R QR4.0500 | - |
| 2" | R QR4.0630 | S QR4.0630 |
| 2 1/2" | R QR1.0750 | S QR4.0750 |
| 3" | R QR4.0900 | S QR4.0900 |
| 4" | R QR4.1100 | S QR4.1100 |
| 5" | R QR1.1400 | S QR4.1400 |
| 6" | R QR4.1600 | S QR4.1600 |
| 8" | R QR4.2250 | S QR4.2250 |
| 10" | R QR4.2800 | - |
| 12" | R QR4.3150 | - |



BLANK FLANGE DRILLED TABLE D & E

| Size | CODE PVC-U | CODE ABS |
|--------|---------------|-------------|
| 1 1/2" | R FCD.0500 | - |
| 2" | R FCD.0630 | S FCD.0630 |
| 3" | R FCD.0900 | S FCD.0900 |
| 4" D | R FCD.1100 | S FCD.1100 |
| 4" E | R FCD.110E | S FCD.110E |
| 6" | R FCD.1600 | S FCD.1600 |

N.B. Accessory discount applies to this item

Flanges

Imperial



BACKING RING - GALVANISED MILD STEEL DRILLED ASA150

| Size | CODE |
|--------|-----------------------------|
| 1/2" | G BR4.020A |
| 3/4" | G BR4.025A |
| 1" | G BR4.032A |
| 1 1/4" | G BR4.040A |
| 1 1/2" | G BR4.050A |
| 2" | G BR4.063A |
| 2 1/2" | G BR4.075A |
| 3" | G BR4.090A |
| 4" | G BR4.110A |
| 5" | G BR4.140A |
| 6" | G BR4.160A |
| 8" | G BR4.225A TO SUIT PVC STUB |
| 8" | G BR4.22DA TO SUIT ABS STUB |

N.B. Accessory discount applies to this item



BACKING RING - GALVANISED MILD STEEL DRILLED BS10 TABLE D

| Size | CODE |
|--------|-----------------------------|
| 1/2" | G BR4.0200 |
| 3/4" | G BR4.0250 |
| 1" | G BR4.0320 |
| 1 1/4" | G BR4.0400 |
| 1 1/2" | G BR4.0500 |
| 2" | G BR4.0630 |
| 2 1/2" | G BR4.0750 |
| 3" | G BR4.0900 |
| 4" E | G BR4.110E |
| 5" | G BR4.1400 |
| 6" | G BR4.1600 |
| 8" | G BR4.2250 TO SUIT PVC STUB |
| 8" | G BR4.225D TO SUIT ABS STUB |
| 10" | G BR4.2800 |
| 12" | G BR4.3150 |

N.B. Accessory discount applies to this item



BACKING RING - GALVANISED MILD STEEL DRILLED PN16

| Size | CODE |
|--------|-----------------------------|
| 1/2" | G BR4.020N |
| 3/4" | G BR4.025N |
| 1" | G BR4.032N |
| 1 1/4" | G BR4.040N |
| 1 1/2" | G BR4.050N |
| 2" | G BR4.063N |
| 2 1/2" | G BR4.075N |
| 3" | G BR4.090N |
| 4" | G BR4.110N |
| 5" | G BR4.140N |
| 6" | G BR4.160N |
| 8" | G BR4.225N TO SUIT PVC STUB |
| 8" | G BR4.22DN TO SUIT ABS STUB |
| 10" | G BR4.280N |
| 12" | G BR4.315N |

N.B. Accessory discount applies to this item



GASKET-FULL FACE DRILLED BS10 TABLE D OR E

| Size | CODE |
|--------|------------|
| 1/2" | E GFF.0200 |
| 3/4" | E GFF.0250 |
| 1" | E GFF.0320 |
| 1 1/4" | E GFF.0400 |
| 1 1/2" | E GFF.0500 |
| 2" | E GFF.0630 |
| 2 1/2" | E GFF.0750 |
| 3" | E GFF.0900 |
| 4" D | E GFF.1100 |
| 4" E | E GFF.110E |
| 6" | E GFF.1600 |

N.B. Accessory discount applies to this item



GASKET-FULL FACE DRILLED PN16

| Size | CODE |
|--------|------------|
| 1/2" | E GFN.0200 |
| 3/4" | E GFN.0250 |
| 1" | E GFN.0320 |
| 1 1/4" | E GFN.0400 |
| 1 1/2" | E GFN.0500 |
| 2" | E GFN.0630 |
| 2 1/2" | E GFN.0750 |
| 3" | E GFN.0900 |
| 4" | E GFN.1100 |
| 4" | E GFN.110E |
| 6" | E GFN.1600 |

N.B. Accessory discount applies to this item



GASKET-STUB FLANGE FOR QR4 STUBS

| Size | CODE |
|--------|------------|
| 1/2" | E GQP.0200 |
| 3/4" | E GQP.0250 |
| 1" | E GQP.0320 |
| 1 1/4" | E GQP.0400 |
| 1 1/2" | E GQP.0500 |
| 2" | E GQP.0630 |
| 2 1/2" | E GQP.0750 |
| 3" | E GQP.0900 |
| 4" | E GQP.1100 |
| 5" | E GQP.1400 |
| 6" | E GQP.1600 |
| 8" | E GQP.2250 |

N.B. Accessory discount applies to this item

NOTE: All items on this page are suitable with both ABS & PVC-U systems.

Pipe Brackets & Tools



PIPE BRACKET

| Size | CODE |
|------|------------|
| 3/8" | P ST4.0160 |
| 1/2" | P ST4.0200 |
| 3/4" | P ST4.0250 |
| 1" | P ST4.0320 |



PIPE BRACKET WITH STRAP

| Size | CODE |
|--------|------------|
| 1 1/4" | P ST4.0400 |
| 1 1/2" | P ST4.0500 |
| 2" | P ST4.0630 |
| 2 1/2" | P ST1.0750 |
| 3" | P ST4.0900 |
| 4" | P ST4.1100 |



PIPE CUTTER

| Size | CODE |
|-----------------------------|------------|
| 16-63mm | T TF0.0100 |
| 50-125mm | T TF0.0101 |
| 16-63mm spare cutter wheel | T TF0.0102 |
| 50-125mm spare cutter wheel | T TF0.0103 |



CHAMFERING TOOLS

| Size | CODE |
|--------------------------|------------|
| 16-63mm chamfering tool | C AF0.0100 |
| 32-160mm chamfering tool | C AF0.0102 |



FIBRE SEAL (SEALING TAPE FOR THREADED CONNECTIONS)

| Size | CODE |
|-----------------|------------|
| Fibre seal tape | F AF0.0100 |



SILICONE REPAIR TAPE

| Size | CODE |
|----------------------|------------|
| Silicone repair tape | F AF0.0400 |

Accessories - PVC-U & ABS



PVC-U SOLVENT CEMENT

| Size | CODE |
|-----------|------------|
| 1/2 litre | R PCO.0200 |

N.B. Accessory discount applies to this item



RH PVC-U SOLVENT CEMENT (THF FREE)

| Size | CODE |
|-----------|------------|
| 1/2 litre | R PCO.0300 |

N.B. Accessory discount applies to this item



ABS SOLVENT CEMENT

| Size | CODE |
|-----------|------------|
| 1/2 litre | S ACO.0200 |

N.B. Accessory discount applies to this item



ASTORE ECO CLEANER (ABS/PVC-U)

| Size | CODE |
|-----------|------------|
| 1/2 litre | M CFO.0200 |

N.B. Accessory discount applies to this item



CHEMICALLY RESISTANT PVC-U CEMENT

| Size | CODE |
|---------|------------|
| 1 litre | R PCO.0100 |

N.B. Accessory discount applies to this item



CHEMICALLY RESISTANT CLEANER

| Size | CODE |
|-----------|------------|
| 1/2 litre | M CFO.0100 |

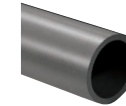
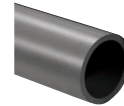
N.B. Accessory discount applies to this item

PVC-U Pipes

Metric

PREMIUM PVC-U PIPE (DWI and WRAS approved)

Optima branded (WRAS approved only)



PREMIUM PVC-U PIPE PN10 PLAIN END

| Size | CODE PVC-U |
|------|---------------|
| 32 | R P10.0320 |
| 40 | R P10.0400 |
| 50 | R P10.0500 |
| 63 | R P10.0630 |
| 75 | R P10.0750 |
| 90 | R P10.0900 |
| 110 | R P10.1100 |
| 125 | R P10.1250 |
| 160 | R P10.1600 |

PREMIUM PVC-U PIPE PN16 PLAIN END

| Size | CODE PVC-U |
|------|---------------|
| 20 | R P16.0200 |
| 25 | R P16.0250 |
| 32 | R P16.0320 |
| 40 | R P16.0400 |
| 50 | R P16.0500 |
| 63 | R P16.0630 |
| 75 | R P16.0750 |
| 90 | R P16.0900 |
| 110 | R P16.1100 |

OPTIMA PIPE PVC-U PN10 PLAIN END

| Size | CODE PVC-U |
|---------|---------------|
| 32 | R M10.0320 |
| 40 | R M10.0400 |
| 50 | R M10.0500 |
| 63 | R M10.0630 |
| 75 | R M10.0750 |
| 90 | R M10.0900 |
| 110 | R M10.1100 |
| MTO 125 | R M10.1250 |
| MTO 160 | R M10.1600 |

OPTIMA PIPE PVC-U PN16 PLAIN END

| Size | CODE PVC-U |
|------|---------------|
| 20 | R M16.0200 |
| 25 | R M16.0250 |
| 32 | R M16.0320 |
| 40 | R M16.0400 |
| 50 | R M16.0500 |
| 63 | R M16.0630 |
| 75 | R M16.0750 |
| 90 | R M16.0900 |
| 110 | R M16.1100 |

Fittings

Metric



SOCKET PLAIN*

| Size | CODE PVC-U |
|------|---------------|
| 16 | R MA1.0160 |
| 20 | R MA1.0200 |
| 25 | R MA1.0250 |
| 32 | R MA1.0320 |
| 40 | R MA1.0400 |
| 50 | R MA1.0500 |
| 63 | R MA1.0630 |
| 75 | R MA1.0750 |
| 90 | R MA1.0900 |
| 110 | R MA1.1100 |
| 125 | R MA1.1250 |
| 140 | R MA1.1400 |
| 160 | R MA1.1600 |
| 200 | R MA1.2000 |
| 225 | R MA1.2250 |
| 250 | R MA1.2500 |
| 280 | R MA1.2800 |
| 315 | R MA1.3150 |



ELBOW 90° PLAIN*

| Size | CODE PVC-U |
|------|---------------|
| 16 | R GO1.0160 |
| 20 | R GO1.0200 |
| 25 | R GO1.0250 |
| 32 | R GO1.0320 |
| 40 | R GO1.0400 |
| 50 | R GO1.0500 |
| 63 | R GO1.0630 |
| 75 | R GO1.0750 |
| 90 | R GO1.0900 |
| 110 | R GO1.1100 |
| 125 | R GO1.1250 |
| 140 | R GO1.1400 |
| 160 | R GO1.1600 |
| 200 | R GO1.2000 |
| 225 | R GO1.2250 |
| 250 | R GO1.2500 |
| 280 | R GO1.2800 |
| 315 | R GO1.3150 |



ELBOW 45° PLAIN*

| Size | CODE PVC-U |
|------|---------------|
| 16 | R GY1.0160 |
| 20 | R GY1.0200 |
| 25 | R GY1.0250 |
| 32 | R GY1.0320 |
| 40 | R GY1.0400 |
| 50 | R GY1.0500 |
| 63 | R GY1.0630 |
| 75 | R GY1.0750 |
| 90 | R GY1.0900 |
| 110 | R GY1.1100 |
| 125 | R GY1.1250 |
| 140 | R GY1.1400 |
| 160 | R GY1.1600 |
| 200 | R GY1.2000 |
| 225 | R GY1.2250 |
| 250 | R GY1.2500 |
| 280 | R GY1.2800 |
| 315 | R GY1.3150 |



TEE 90° PLAIN*

| Size | CODE PVC-U |
|------|---------------|
| 16 | R TI1.0160 |
| 20 | R TI1.0200 |
| 25 | R TI1.0250 |
| 32 | R TI1.0320 |
| 40 | R TI1.0400 |
| 50 | R TI1.0500 |
| 63 | R TI1.0630 |
| 75 | R TI1.0750 |
| 90 | R TI1.0900 |
| 110 | R TI1.1100 |
| 125 | R TI1.1250 |
| 140 | R TI1.1400 |
| 160 | R TI1.1600 |
| 200 | R TI1.2000 |
| 225 | R TI1.2250 |
| 250 | R TI1.2500 |
| 280 | R TI1.2800 |
| 315 | R TI1.3150 |



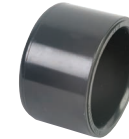
UNION PLAIN

| Size | CODE PVC-U |
|------|---------------|
| 16 | R BO1.0160 |
| 20 | R BO1.0200 |
| 25 | R BO1.0250 |
| 32 | R BO1.0320 |
| 40 | R BO1.0400 |
| 50 | R BO1.0500 |
| 63 | R BO1.0630 |
| 75 | R BO1.0750 |
| 90 | R BO1.0900 |
| 110 | R BO1.1100 |



METRIC/INCH SOCKET PLAIN

| Size | CODE PVC-U |
|---------------|---------------|
| 1/2" x 20mm | R MA5.0200 |
| 3/4" x 25mm | R MA5.0250 |
| 1" x 32mm | R MA5.0320 |
| 1 1/4" x 40mm | R MA5.0400 |
| 1 1/2" x 50mm | R MA5.0500 |
| 2" x 63mm | R MA5.0630 |
| 3" x 90mm | R MA5.0900 |
| 4" x 110mm | R MA5.1100 |



END CAP PLAIN*

| Size | CODE PVC-U |
|------|---------------|
| 16 | R CA1.0160 |
| 20 | R CA1.0200 |
| 25 | R CA1.0250 |
| 32 | R CA1.0320 |
| 40 | R CA1.0400 |
| 50 | R CA1.0500 |
| 63 | R CA1.0630 |
| 75 | R CA1.0750 |
| 90 | R CA1.0900 |
| 110 | R CA1.1100 |
| 125 | R CA1.1250 |
| 140 | R CA1.1400 |
| 160 | R CA1.1600 |



TEE 45° PLAIN*

| Size | CODE PVC-U |
|------|---------------|
| 32 | R TY1.0320 |
| 40 | R TY1.0400 |
| 50 | R TY1.0500 |
| 63 | R TY1.0630 |

*Larger sizes available upon request

Fittings

Metric



BEND 90° PLAIN*

| Size | CODE PVC-U |
|------|---------------|
| 20 | R CU1.0200 |
| 25 | R CU1.0250 |
| 32 | R CU1.0320 |
| 40 | R CU1.0400 |
| 50 | R CU1.0500 |
| 63 | R CU1.0630 |
| 75 | R CU1.0750 |
| 90 | R CU1.0900 |
| 110 | R CU1.1100 |



REDUCING PIECE MALE PLAIN /FEMALE PLAIN

| Size | CODE PVC-U |
|-----------|---------------|
| 160 x 110 | R RL1.160L |



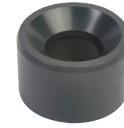
CROSS PLAIN*

| Size | CODE PVC-U |
|------|---------------|
| 25 | R CR1.0250 |
| 32 | R CR1.0320 |
| 40 | R CR1.0400 |
| 50 | R CR1.0500 |
| 63 | R CR1.0630 |



REDUCING SOCKET PLAIN*

| Size | CODE PVC-U |
|-----------|---------------|
| 20 x 16 | R MR1.020A |
| 25 x 20 | R MR1.025B |
| 32 x 25 | R MR1.032C |
| 40 x 32 | R MR1.040D |
| 50 x 40 | R MR1.050E |
| 63 x 50 | R MR1.063F |
| 75 x 63 | R MR1.075G |
| 90 x 75 | R MR1.090H |
| 110 x 90 | R MR1.110I |
| 125 x 110 | R MR1.125L |
| 140 x 110 | R MR1.140L |



REDUCING BUSH PLAIN*

| Size | CODE PVC-U |
|-----------|---------------|
| 20 x 16 | R RC1.020A |
| 25 x 16 | R RC1.025A |
| 25 x 20 | R RC1.025B |
| 32 x 16 | R RC1.032A |
| 32 x 20 | R RC1.032B |
| 32 x 25 | R RC1.032C |
| 40 x 20 | R RC1.040B |
| 40 x 25 | R RC1.040C |
| 40 x 32 | R RC1.040D |
| 50 x 25 | R RC1.050C |
| 50 x 32 | R RC1.050D |
| 50 x 40 | R RC1.050E |
| 63 x 32 | R RC1.063D |
| 63 x 40 | R RC1.063E |
| 63 x 50 | R RC1.063F |
| 75 x 40 | R RC1.075E |
| 75 x 50 | R RC1.075F |
| 75 x 63 | R RC1.075G |
| 90 x 50 | R RC1.090F |
| 90 x 63 | R RC1.090G |
| 90 x 75 | R RC1.090H |
| 110 x 63 | R RC1.110G |
| 110 x 75 | R RC1.110H |
| 110 x 90 | R RC1.110I |
| 125 x 75 | R RC1.125H |
| 125 x 90 | R RC1.125I |
| 125 x 110 | R RC1.125L |
| 140 x 90 | R RC1.140I |
| 140 x 110 | R RC1.140L |
| 140 x 125 | R RC1.140M |
| 160 x 110 | R RC1.160L |
| 160 x 125 | R RC1.160M |
| 160 x 140 | R RC1.160N |
| 200 x 160 | R RC1.200O |
| 225 x 160 | R RC1.225O |
| 225 x 200 | R RC1.225P |
| 250 x 160 | R RC1.250O |
| 250 x 200 | R RC1.250P |
| 250 x 225 | R RC1.250Q |
| 280 x 225 | R RC1.280Q |
| 315 x 200 | R RC1.315P |
| 315 x 225 | R RC1.315Q |
| 315 x 250 | R RC1.315R |
| 315 x 280 | R RC1.315S |



REDUCING TEE PLAIN*

| Size | CODE PVC-U |
|-----------|---------------|
| 20 x 16 | R TR1.020A |
| 25 x 16 | R TR1.025A |
| 25 x 20 | R TR1.025B |
| 32 x 16 | R TR1.032A |
| 32 x 20 | R TR1.032B |
| 32 x 25 | R TR1.032C |
| 40 x 16 | R TR1.040A |
| 40 x 20 | R TR1.040B |
| 40 x 25 | R TR1.040C |
| 40 x 32 | R TR1.040D |
| 50 x 20 | R TR1.050B |
| 50 x 25 | R TR1.050C |
| 50 x 32 | R TR1.050D |
| 50 x 40 | R TR1.050E |
| 63 x 25 | R TR1.063C |
| 63 x 32 | R TR1.063D |
| 63 x 40 | R TR1.063E |
| 63 x 50 | R TR1.063F |
| 75 x 32 | R TR1.075D |
| 75 x 40 | R TR1.075E |
| 75 x 50 | R TR1.075F |
| 75 x 63 | R TR1.075G |
| 90 x 40 | R TR1.090E |
| 90 x 50 | R TR1.090F |
| 90 x 63 | R TR1.090G |
| 90 x 75 | R TR1.090H |
| 110 x 50 | R TR1.110F |
| 110 x 63 | R TR1.110G |
| 110 x 75 | R TR1.110H |
| 110 x 90 | R TR1.110I |
| 160 x 110 | R TR1.160L |

Fittings

Metric/Imperial



SOCKET PLAIN/BSP THREADED

| Size | CODE PVC-U |
|-------------|---------------|
| 16 x 3/8" | R MA3.016A |
| 20 x 1/2" | R MA3.020B |
| 25 x 3/4" | R MA3.025C |
| 32 x 1" | R MA3.032D |
| 40 x 1 1/4" | R MA3.040E |
| 50 x 1 1/2" | R MA3.050F |
| 63 x 2" | R MA3.063G |
| 75 x 2 1/2" | R MA3.075H |
| 90 x 3" | R MA3.090I |
| 110 x 4" | R MA3.110L |



UNION PLAIN/BSP THREADED

| Size | CODE PVC-U |
|-------------|---------------|
| 16 x 3/8" | R BO3.016A |
| 20 x 1/2" | R BO3.020B |
| 25 x 3/4" | R BO3.025C |
| 32 x 1" | R BO3.032D |
| 40 x 1 1/4" | R BO3.040E |
| 50 x 1 1/2" | R BO3.050F |
| 63 x 2" | R BO3.063G |
| 75 x 2 1/2" | R BO3.075H |
| 90 x 3" | R BO3.090I |
| 110 x 4" | R BO3.110L |



ELBOW 90° PLAIN/BSP THREADED

| Size | CODE PVC-U |
|-------------|---------------|
| 16 x 3/8" | R GO3.016A |
| 20 x 1/2" | R GO3.020B |
| 25 x 3/4" | R GO3.025C |
| 32 x 1" | R GO3.032D |
| 40 x 1 1/4" | R GO3.040E |
| 50 x 1 1/2" | R GO3.050F |
| 63 x 2" | R GO3.063G |
| 75 x 2 1/2" | R GO3.075H |
| 90 x 3" | R GO3.090I |
| 110 x 4" | R GO3.110L |



ADAPTOR PLAIN SPIGOT/BSP THREADED FEMALE

| Size | CODE PVC-U |
|-------------|---------------|
| 20 x 1/2" | R AF3.020B |
| 20 x 3/4" | R AF3.020C |
| 25 x 1/2" | R AF3.025B |
| 25 x 3/4" | R AF3.025C |
| 25 x 1" | R AF3.025D |
| 32 x 3/4" | R AF3.032C |
| 32 x 1" | R AF3.032D |
| 40 x 1" | R AF3.040D |
| 40 x 1 1/4" | R AF3.040E |
| 50 x 1 1/2" | R AF3.050F |
| 50 x 2" | R AF3.050G |
| 63 x 2" | R AF3.063G |
| 75 x 2" | R AF3.075G |
| 75 x 2 1/2" | R AF3.075H |
| 75 x 3" | R AF3.075I |
| 90 x 2 1/2" | R AF3.090H |
| 90 x 3" | R AF3.090I |
| 90 x 4" | R AF3.090L |
| 110 x 3" | R AF3.110I |
| 110 x 4" | R AF3.110L |



TEE 90° PLAIN/BSP THREADED BRANCH

| Size | CODE PVC-U |
|------------------|---------------|
| 16 x 16 x 3/8" | R TI3.016A |
| 20 x 20 x 1/2" | R TI3.020B |
| 25 x 25 x 3/4" | R TI3.025C |
| 32 x 32 x 1" | R TI3.032D |
| 40 x 40 x 1 1/4" | R TI3.040E |
| 50 x 50 x 1 1/2" | R TI3.050F |
| 63 x 63 x 2" | R TI3.063G |
| 75 x 75 x 2 1/2" | R TI3.075H |
| 90 x 90 x 3" | R TI3.090I |
| 110 x 110 x 4" | R TI3.110L |



METRIC PVC TANK CONNECTOR

| Size | CODE PVC-U |
|------------------|---------------|
| 3/4" x 16 x 1/2" | R AS3.016B |
| 1" x 20 x 3/4" | R AS3.020C |
| 1 1/4" x 25 x 1" | R AS3.025D |
| 1 1/2" x 32 x 1" | R AS3.032D |
| 2" x 40 x 1 1/2" | R AS3.040F |



ADAPTOR PLAIN FEMALE/BSP THREADED MALE SPIGOT

| Size | CODE PVC-U |
|-------------------|---------------|
| 12 x 16 x 3/8" | R AM3.012A |
| 16 x 20 x 3/8" | R AM3.016A |
| 16 x 20 x 1/2" | R AM3.016B |
| 20 x 25 x 3/8" | R AM3.020A |
| 20 x 25 x 1/2" | R AM3.020B |
| 20 x 25 x 3/4" | R AM3.020C |
| 25 x 32 x 1/2" | R AM3.025B |
| 25 x 32 x 3/4" | R AM3.025C |
| 25 x 32 x 1" | R AM3.025D |
| 32 x 40 x 3/4" | R AM3.032C |
| 32 x 40 x 1" | R AM3.032D |
| 32 x 40 x 1 1/4" | R AM3.032E |
| 40 x 50 x 1" | R AM3.040D |
| 40 x 50 x 1 1/4" | R AM3.040E |
| 40 x 50 x 1 1/2" | R AM3.040F |
| 50 x 63 x 1 1/4" | R AM3.050E |
| 50 x 63 x 1 1/2" | R AM3.050F |
| 50 x 63 x 2" | R AM3.050G |
| 63 x 75 x 1 1/2" | R AM3.063F |
| 63 x 75 x 2" | R AM3.063G |
| 63 x 75 x 2 1/2" | R AM3.063H |
| 75 x 90 x 2" | R AM3.075G |
| 75 x 90 x 2 1/2" | R AM3.075H |
| 75 x 90 x 3" | R AM3.075I |
| 90 x 110 x 2 1/2" | R AM3.090H |
| 90 x 110 x 3" | R AM3.090I |
| 90 x 110 x 4" | R AM3.090L |
| 110 x 125 x 3" | R AM3.110I |
| 110 x 125 x 4" | R AM3.110L |

Fittings

Metric/Imperial



ADAPTOR PLAIN/THREADED WITH METAL REINFORCING RING

| Size | CODE PVC-U |
|-------------|---------------|
| 20 x 1/2" | R RM3.020B |
| 25 x 1/2" | R RM3.025B |
| 25 x 3/4" | R RM3.025C |
| 32 x 3/4" | R RM3.032C |
| 32 x 1" | R RM3.032D |
| 40 x 1" | R RM3.040D |
| 40 x 1 1/4" | R RM3.040E |
| 50 x 1 1/2" | R RM3.050F |
| 50 x 2" | R RM3.050G |
| 63 x 2" | R RM3.063G |



ADAPTOR PLAIN/THREADED WITH METAL REINFORCING RING

| Size | CODE PVC-U |
|-------------|---------------|
| 16 x 3/8" | R MM3.016A |
| 20 x 1/2" | R MM3.020B |
| 25 x 3/4" | R MM3.025C |
| 32 x 1" | R MM3.032D |
| 40 x 1 1/4" | R MM3.040E |
| 50 x 1 1/2" | R MM3.050F |
| 63 x 2" | R MM3.063G |



ADAPTOR PLAIN/THREADED WITH METAL REINFORCING RING

| Size | CODE PVC-U |
|-------------|---------------|
| 16 x 3/8" | R GM3.016A |
| 20 x 1/2" | R GM3.020B |
| 25 x 3/4" | R GM3.025C |
| 32 x 1" | R GM3.032D |
| 40 x 1 1/4" | R GM3.040E |
| 50 x 1 1/2" | R GM3.050F |
| 63 x 2" | R GM3.063G |



ADAPTOR PLAIN/THREADED WITH METAL REINFORCING RING

| Size | CODE PVC-U |
|-------------|---------------|
| 16 x 3/8" | R TM3.016A |
| 20 x 1/2" | R TM3.020B |
| 25 x 3/4" | R TM3.025C |
| 32 x 1" | R TM3.032D |
| 40 x 1 1/4" | R TM3.040E |
| 50 x 1 1/2" | R TM3.050F |
| 63 x 2" | R TM3.063G |



HOSE ADAPTOR BSP THREADED/METRIC

| Size | CODE PVC-U |
|-------------|---------------|
| 3/8" x 16 | R PO3.016A |
| 1/2" x 20 | R PO3.020B |
| 3/4" x 25 | R PO3.025C |
| 1" x 32 | R PO3.032D |
| 1 1/4" x 40 | R PO3.040E |
| 1 1/2" x 50 | R PO3.050F |
| 2" x 63 | R PO3.063G |



UNION PLAIN/MALE BSP

| Size | CODE PVC-U |
|-------------|---------------|
| 50 x 1 1/2" | R BM3.050F |
| 50 x 2" | R BM3.050G |
| 63 x 2" | R BM3.063G |



COMPOSITE UNION PVC MALE BSP BRASS

| Size | CODE PVC-U |
|-------------|---------------|
| 20 x 1/2" | R MB3.020B |
| 25 x 3/4" | R MB3.025C |
| 32 x 1" | R MB3.032D |
| 40 x 1 1/4" | R MB3.040E |
| 50 x 1 1/2" | R MB3.050F |
| 63 x 2" | R MB3.063G |

N.B. Accessory discount applies to this item



COMPOSITE UNION PVC FEMALE BSP BRASS

| Size | CODE PVC-U |
|-------------|---------------|
| 20 x 1/2" | R FB3.020B |
| 25 x 3/4" | R FB3.025C |
| 32 x 1" | R FB3.032D |
| 40 x 1 1/4" | R FB3.040E |
| 50 x 1 1/2" | R FB3.050F |
| 63 x 2" | R FB3.063G |

N.B. Accessory discount applies to this item

Fittings

Imperial



SOCKET THREADED

| Size | CODE PVC-U |
|--------|---------------|
| 3/8" | R MA2.0160 |
| 1/2" | R MA2.0200 |
| 3/4" | R MA2.0250 |
| 1" | R MA2.0320 |
| 1 1/4" | R MA2.0400 |
| 1 1/2" | R MA2.0500 |
| 2" | R MA2.0630 |
| 2 1/2" | R MA2.0750 |
| 3" | R MA2.0900 |
| 4" | R MA2.1100 |



ELBOW 90° THREADED

| Size | CODE PVC-U |
|--------|---------------|
| 3/8" | R GO2.0160 |
| 1/2" | R GO2.0200 |
| 3/4" | R GO2.0250 |
| 1" | R GO2.0320 |
| 1 1/4" | R GO2.0400 |
| 1 1/2" | R GO2.0500 |
| 2" | R GO2.0630 |
| 2 1/2" | R GO2.0750 |
| 3" | R GO2.0900 |
| 4" | R GO2.1100 |



HEXAGON NIPPLE THREADED

| Size | CODE PVC-U |
|--------|---------------|
| 3/8" | R NI2.0160 |
| 1/2" | R NI2.0200 |
| 3/4" | R NI2.0250 |
| 1" | R NI2.0320 |
| 1 1/4" | R NI2.0400 |
| 1 1/2" | R NI2.0500 |
| 2" | R NI2.0630 |
| 2 1/2" | R NI2.0750 |
| 3" | R NI2.0900 |
| 4" | R NI2.1100 |



REDUCING NIPPLE THREADED

| Size | CODE PVC-U |
|-----------------|---------------|
| 1/2" x 3/8" | R NR2.020A |
| 3/4" x 1/2" | R NR2.025B |
| 1" x 3/4" | R NR2.032C |
| 1 1/4" x 1" | R NR2.040D |
| 1 1/2" x 1 1/4" | R NR2.050E |
| 2" x 1 1/2" | R NR2.063F |
| 2 1/2" x 2" | R NR2.075G |
| 3" x 2 1/2" | R NR2.090H |
| 4" x 3" | R NR2.110I |



REDUCING PIECE FEMALE THREADED MALE THREADED

| Size | CODE PVC-U |
|-----------------|---------------|
| 1/2" x 3/8" | R MG2.016B |
| 3/4" x 1/2" | R MG2.020C |
| 1" x 3/4" | R MG2.025D |
| 1 1/4" x 1" | R MG2.032E |
| 1 1/2" x 1 1/4" | R MG2.040F |
| 2" x 1 1/2" | R MG2.050G |
| 2 1/2" x 2" | R MG2.063H |
| 3" x 2 1/2" | R MG2.075I |
| 4" x 3" | R MG2.090L |



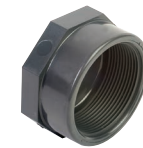
TEE THREADED

| Size | CODE PVC-U |
|--------|---------------|
| 3/8" | R TI2.0160 |
| 1/2" | R TI2.0200 |
| 3/4" | R TI2.0250 |
| 1" | R TI2.0320 |
| 1 1/4" | R TI2.0400 |
| 1 1/2" | R TI2.0500 |
| 2" | R TI2.0630 |
| 2 1/2" | R TI2.0750 |
| 3" | R TI2.0900 |
| 4" | R TI2.1100 |



PLUG THREADED

| Size | CODE PVC-U |
|--------|---------------|
| 3/8" | R TA2.0160 |
| 1/2" | R TA2.0200 |
| 3/4" | R TA2.0250 |
| 1" | R TA2.0320 |
| 1 1/4" | R TA2.0400 |
| 1 1/2" | R TA2.0500 |
| 2" | R TA2.0630 |
| 2 1/2" | R TA2.0750 |
| 3" | R TA2.0900 |
| 4" | R TA2.1100 |



END CAP THREADED

| Size | CODE PVC-U |
|--------|---------------|
| 3/8" | R CA2.0160 |
| 1/2" | R CA2.0200 |
| 3/4" | R CA2.0250 |
| 1" | R CA2.0320 |
| 1 1/4" | R CA2.0400 |
| 1 1/2" | R CA2.0500 |
| 2" | R CA2.0630 |
| 2 1/2" | R CA2.0750 |
| 3" | R CA2.0900 |
| 4" | R CA2.1100 |

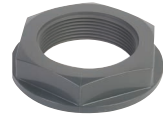
Fittings

Imperial



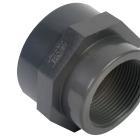
UNION THREADED

| Size | CODE PVC-U |
|--------|---------------|
| 3/8" | R BO2.0160 |
| 1/2" | R BO2.0200 |
| 3/4" | R BO2.0250 |
| 1" | R BO2.0320 |
| 1 1/4" | R BO2.0400 |
| 1 1/2" | R BO2.0500 |
| 2" | R BO2.0630 |
| 2 1/2" | R BO2.0750 |
| 3" | R BO2.0900 |
| 4" | R BO2.1100 |



BACK NUT THREADED

| Size | CODE PVC-U |
|--------|---------------|
| 1/2" | R NU2.0200 |
| 3/4" | R NU2.0250 |
| 1" | R NU2.0320 |
| 1 1/4" | R NU2.0400 |
| 1 1/2" | R NU2.0500 |
| 2" | R NU2.0630 |
| 2 1/2" | R NU2.0750 |
| 3" | R NU2.090N |
| 4" | R NU2.110N |



REDUCING PIECE FEMALE THREADED

| Size | CODE PVC-U |
|-----------------|---------------|
| 1/2" x 3/8" | R MR2.020A |
| 3/4" x 1/2" | R MR2.025B |
| 1" x 3/4" | R MR2.032C |
| 1 1/4" x 1" | R MR2.040D |
| 1 1/2" x 1 1/4" | R MR2.050E |
| 2" x 1 1/2" | R MR2.063F |
| 2 1/2" x 2" | R MR2.075G |
| 3" x 2 1/2" | R MR2.090H |
| 4" x 3" | R MR2.110I |



REDUCING PIECE MALE THREADED/FEMALE THREADED

| Size | CODE PVC-U |
|-----------------|---------------|
| 1/2" x 3/8" | R RI2.020A |
| 3/4" x 1/2" | R RI2.025B |
| 1" x 1/2" | R RI2.032B |
| 1" x 3/4" | R RI2.032C |
| 1 1/4" x 1/2" | R RI2.040B |
| 1 1/4" x 3/4" | R RI2.040C |
| 1 1/4" x 1" | R RI2.040D |
| 1 1/2" x 3/4" | R RI2.050C |
| 1 1/2" x 1" | R RI2.050D |
| 1 1/2" x 1 1/4" | R RI2.050E |
| 2" x 1" | R RI2.063D |
| 2" x 1 1/4" | R RI2.063E |
| 2" x 1 1/2" | R RI2.063F |
| 2 1/2" x 1 1/4" | R RI2.075E |
| 2 1/2" x 1 1/2" | R RI2.075F |
| 2 1/2" x 2" | R RI2.075G |
| 3" x 1 1/2" | R RI2.090F |
| 3" x 2" | R RI2.090G |
| 3" x 2 1/2" | R RI2.090H |
| 4" x 2" | R RI2.110G |
| 4" x 2 1/2" | R RI2.110H |
| 4" x 3" | R RI2.110I |



BARREL NIPPLE THREADED/THREADED

| Size | CODE PVC-U |
|--------|---------------|
| 3/8" | R BA2.0160 |
| 1/2" | R BA2.0200 |
| 3/4" | R BA2.0250 |
| 1" | R BA2.0320 |
| 1 1/4" | R BA2.0400 |
| 1 1/2" | R BA2.0500 |
| 2" | R BA2.0630 |
| 2 1/2" | R BA2.0750 |
| 3" | R BA2.0900 |
| 4" | R BA2.1100 |

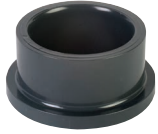


ELBOW 45° THREADED

| Size | CODE PVC-U |
|--------|---------------|
| 3/8" | R GY2.0160 |
| 1/2" | R GY2.0200 |
| 3/4" | R GY2.0250 |
| 1" | R GY2.0320 |
| 1 1/4" | R GY2.0400 |
| 1 1/2" | R GY2.0500 |
| 2" | R GY2.0630 |
| 2 1/2" | R GY2.0750 |
| 3" | R GY2.0900 |
| 4" | R GY2.1100 |

Flanges

Metric



STUB FLANGE SERRATED FACE*

| Size | CODE |
|------|------------|
| 20 | R QR1.0200 |
| 25 | R QR1.0250 |
| 32 | R QR1.0320 |
| 40 | R QR1.0400 |
| 50 | R QR1.0500 |
| 63 | R QR1.0630 |
| 75 | R QR1.0750 |
| 90 | R QR1.0900 |
| 110 | R QR1.1100 |
| 125 | R QR1.1250 |
| 140 | R QR1.1400 |
| 160 | R QR1.1600 |
| 200 | R QR1.2000 |
| 225 | R QR1.2250 |
| 250 | R QR1.2500 |
| 280 | R QR1.2800 |
| 315 | R QR1.3150 |



FULL FACE FLANGE PLAIN/ DRILLED BS 4504 PN10/16

| Size | CODE |
|------|------------|
| 20 | R FF1.0200 |
| 25 | R FF1.0250 |
| 32 | R FF1.0320 |
| 40 | R FF1.0400 |
| 50 | R FF1.0500 |
| 63 | R FF1.0630 |
| 75 | R FF1.0750 |
| 90 | R FF1.0900 |
| 110 | R FF1.1100 |



BLANK FLANGE DRILLED BS 4504 PN16

| Size | CODE |
|------|------------|
| 20 | R FC1.0200 |
| 25 | R FC1.0250 |
| 32 | R FC1.0320 |
| 40 | R FC1.0400 |
| 50 | R FC1.0500 |
| 63 | R FC1.0630 |
| 75 | R FC1.0750 |
| 90 | R FC1.0900 |
| 110 | R FC1.1100 |
| 160 | R FC1.1600 |



LOOSE FLANGE DRILLED BS 4504 PN16

| Size | CODE |
|------|------------|
| 20 | R FL1.0200 |
| 25 | R FL1.0250 |
| 32 | R FL1.0320 |
| 40 | R FL1.0400 |
| 50 | R FL1.0500 |
| 63 | R FL1.0630 |
| 75 | R FL1.0750 |
| 90 | R FL1.0900 |
| 110 | R FL1.1100 |
| 125 | R FL1.1250 |
| 140 | R FL1.1400 |
| 160 | R FL1.1600 |
| 200* | R FL1.2000 |
| 225 | R FL1.225N |
| 250* | R FL1.2500 |
| 280* | R FL1.2800 |
| 315* | R FL1.3150 |

*NP10 drilling



GASKET FULL FACE DRILLED PN16

| Size | CODE |
|------|------------|
| 20 | E GFN.0200 |
| 25 | E GFN.0250 |
| 32 | E GFN.0320 |
| 40 | E GFN.0400 |
| 50 | E GFN.0500 |
| 63 | E GFN.0630 |
| 75 | E GFN.0750 |
| 90 | E GFN.0900 |
| 110 | E GFN.1100 |

N.B. Accessory discount applies to this item



GASKET STUB FLANGE FOR QR1 STUBS

| Size | CODE |
|------|------------|
| 20 | E GQP.0200 |
| 25 | E GQP.0250 |
| 32 | E GQP.0320 |
| 40 | E GQP.0400 |
| 50 | E GQP.0500 |
| 63 | E GQP.0630 |
| 75 | E GQP.0750 |
| 90 | E GQP.0900 |
| 110 | E GQP.1100 |
| 125 | E GQP.1250 |
| 140 | E GQP.1400 |
| 160 | E GQP.1600 |
| 200 | E GQP.2000 |
| 225 | E GQP.2250 |
| 250 | E GQP.2500 |

N.B. Accessory discount applies to this item



BACKING RING GALVANISED MILD STEEL DRILLED PN16

| Size | CODE |
|------|------------|
| 20 | G BR1.0200 |
| 25 | G BR1.0250 |
| 32 | G BR1.0320 |
| 40 | G BR1.0400 |
| 50 | G BR1.0500 |
| 63 | G BR1.0630 |
| 75 | G BR1.0750 |
| 90 | G BR1.0900 |
| 110 | G BR1.1100 |
| 160 | G BR1.1600 |

N.B. Accessory discount applies to this item

*Larger sizes available upon request

Pipe Brackets & Tools



PIPE BRACKET

| Size | CODE |
|------|------------|
| 16 | P ST1.0160 |
| 20 | P ST1.0200 |
| 25 | P ST1.0250 |
| 32 | P ST1.0320 |



PIPE BRACKET WITH STRAP

| Size | CODE |
|------|------------|
| 40 | P ST1.0400 |
| 50 | P ST1.0500 |
| 63 | P ST1.0630 |
| 75 | P ST1.0750 |
| 90 | P ST1.0900 |
| 110 | P ST1.1100 |



PIPE CUTTER

| Size | CODE |
|-----------------------------|------------|
| 16-63mm | T TF0.0100 |
| 50-125mm | T TF0.0101 |
| 16-63mm spare cutter wheel | T TF0.0102 |
| 50-125mm spare cutter wheel | T TF0.0103 |



CHAMFERING TOOLS

| Size | CODE |
|--------------------------|------------|
| 16-63mm chamfering tool | C AF0.0100 |
| 32-160mm chamfering tool | C AF0.0102 |



FIBRE SEAL (SEALING TAPE FOR THREADED CONNECTIONS)

| Size | CODE |
|-----------------|------------|
| Fibre seal tape | F AF0.0100 |



SILICONE REPAIR TAPE

| Size | CODE |
|----------------------|------------|
| Silicone repair tape | F AF0.0400 |

Accessories - PVC-U



PVC-U SOLVENT CEMENT

| Size | CODE |
|-----------|------------|
| 1/2 litre | R PCO.0200 |

N.B. Accessory discount applies to this item



RH PVC-U SOLVENT CEMENT (THF FREE)

| Size | CODE |
|-----------|------------|
| 1/2 litre | R PCO.0300 |

N.B. Accessory discount applies to this item



ASTORE ECO CLEANER (ABS/PVC-U)

| Size | CODE |
|-----------|------------|
| 1/2 litre | M CFO.0200 |

N.B. Accessory discount applies to this item



CHEMICALLY RESISTANT PVC-U CEMENT

| Size | CODE |
|---------|------------|
| 1 litre | R PCO.0100 |

N.B. Accessory discount applies to this item



CHEMICALLY RESISTANT CLEANER

| Size | CODE |
|-----------|------------|
| 1/2 litre | M CFO.0100 |

N.B. Accessory discount applies to this item

Valves

All products on this page contain EPDM seals as standard.



IMPERIAL DOUBLE UNION BALL VALVE PLAIN

| Size | CODE PVC-U | CODE ABS |
|--------|---------------|-------------|
| 1/2" | I 724.0200 | S 724.0200 |
| 3/4" | I 724.0250 | S 724.0250 |
| 1" | I 724.0320 | S 724.0320 |
| 1 1/4" | I 724.0400 | S 724.0400 |
| 1 1/2" | I 724.0500 | S 724.0500 |
| 2" | I 724.0630 | S 724.0630 |
| 2 1/2" | I 724.0750 | S 724.0750 |
| 3" | I 724.0900 | S 724.0900 |
| 4" | I 724.1100 | S 724.1100 |



METRIC DOUBLE UNION BALL VALVE PLAIN

| Size | CODE PVC-U |
|------|---------------|
| 16 | M 724.0160 |
| 20 | M 724.0200 |
| 25 | M 724.0250 |
| 32 | M 724.0320 |
| 40 | M 724.0400 |
| 50 | M 724.0500 |
| 63 | M 724.0630 |
| 75 | M 724.0750 |
| 90 | M 724.0900 |
| 110 | M 724.1100 |



THREADED DOUBLE UNION BALL VALVE PLAIN

| Size | CODE PVC-U |
|------|---------------|
| 16 | M 724.0160 |
| 20 | M 724.0200 |
| 25 | M 724.0250 |
| 32 | M 724.0320 |
| 40 | M 724.0400 |
| 50 | M 724.0500 |
| 63 | M 724.0630 |
| 75 | M 724.0750 |
| 90 | M 724.0900 |
| 110 | M 724.1100 |



BUTTERFLY VALVE

| Size | CODE PVC-U |
|-----------|---------------|
| 50/1 1/2" | M 800.0500 |
| 63/2" | M 800.0630 |
| 75/2 1/2" | M 800.0750 |
| 90/3" | M 800.0900 |
| 110/4" | M 800.1100 |
| 140/5" | M 800.1400 |
| 160/6" | M 800.1600 |
| 225/8" | M 800.2250 |
| 280/10" | M 800.2800 |
| 315/12" | M 800.3150 |

Butterfly Valve fixing lugs available on request.



3-WAY BALL VALVES T-PORT INCH PLAIN

| Size | CODE PVC-U |
|--------|---------------|
| 1/2" | I 930.0200 |
| 3/4" | I 930.0250 |
| 1" | I 930.0320 |
| 1 1/4" | I 930.0400 |
| 1 1/2" | I 930.0500 |
| 2" | I 930.0630 |



3-WAY BALL VALVES T-PORT METRIC

| Size | CODE PVC-U |
|------|---------------|
| 20 | M 930.0200 |
| 25 | M 930.0250 |
| 32 | M 930.0320 |
| 40 | M 930.0400 |
| 50 | M 930.0500 |
| 63 | M 930.0630 |



3-WAY BALL VALVES T-PORT BSP THREADED

| Size | CODE PVC-U |
|--------|---------------|
| 1/2" | T 931.0200 |
| 3/4" | T 931.0250 |
| 1" | T 931.0320 |
| 1 1/4" | T 931.0400 |
| 1 1/2" | T 931.0500 |
| 2" | T 931.0630 |

Valves

All products on this page contain EPDM seals as standard.



IMPERIAL DOUBLE UNION BALL VALVE PLAIN

| Size | CODE PVC-U |
|--------|---------------|
| 1/2" | I 322.0200 |
| 3/4" | I 322.0250 |
| 1" | I 322.0320 |
| 1 1/4" | I 322.0400 |
| 1 1/2" | I 322.0500 |
| 2" | I 322.0630 |
| 2 1/2" | I 322.0750 |
| 3" | I 322.0900 |
| 4" | I 322.1100 |



METRIC DOUBLE UNION BALL VALVE PLAIN

| Size | CODE PVC-U |
|------|---------------|
| 20 | M 322.0200 |
| 25 | M 322.0250 |
| 32 | M 322.0320 |
| 40 | M 322.0400 |
| 50 | M 322.0500 |
| 63 | M 322.0630 |
| 75 | M 322.0750 |
| 90 | M 322.0900 |
| 110 | M 322.1100 |



THREADED DOUBLE UNION BALL VALVE

| Size | CODE PVC-U |
|--------|---------------|
| 1/2" | T 321.0200 |
| 3/4" | T 321.0250 |
| 1" | T 321.0320 |
| 1 1/4" | T 321.0400 |
| 1 1/2" | T 321.0500 |
| 2" | T 321.0630 |
| 2 1/2" | T 321.0750 |
| 3" | T 321.0900 |
| 4" | T 321.1100 |



DOUBLE UNION PVC BALL VALVE WITH COMPRESSION ENDS

| Size | CODE PVC-U | |
|------|---------------|-----|
| 20 | M 334.0200 | MTO |
| 25 | M 334.0250 | MTO |
| 32 | M 334.0320 | MTO |



SINGLE UNION PVC BALL VALVE WITH COMPRESSION ENDS

| Size | CODE PVC-U | |
|------|---------------|-----|
| 20 | M 335.0200 | MTO |
| 25 | M 335.0250 | MTO |
| 32 | M.335.0320 | MTO |



METRIC DOUBLE UNION NON RETURN VALVE PLAIN

| Size | CODE PVC-U |
|------|---------------|
| 16 | M 21N.0160 |
| 20 | M 21N.0200 |
| 25 | M 21N.0250 |
| 32 | M 21N.0320 |
| 40 | M 21N.0400 |
| 50 | M 21N.0500 |
| 63 | M 21N.0630 |



THREADED DOUBLE UNION BALL NON RETURN VALVE

| Size | CODE PVC-U |
|--------|---------------|
| 3/8" | T 22N.0160 |
| 1/2" | T 22N.0200 |
| 3/4" | T 22N.0250 |
| 1" | T 22N.0320 |
| 1 1/4" | T 22N.0400 |
| 1 1/2" | T 22N.0500 |
| 2" | T 22N.0630 |



SINGLE UNION BALL VALVE COMPRESSION TO FEMALE THREADED

| Size | CODE PVC-U | |
|--------|---------------|-----|
| 3/8" | T 305.016A | MTO |
| 1/2" | T 305.020B | MTO |
| 3/4" | T 305.025C | MTO |
| 1" | T 305.032D | MTO |
| 1 1/4" | T 305.040E | MTO |
| 1 1/2" | T 305.050F | MTO |
| 2" | T 305.063G | MTO |

Valves

All products on this page contain EPDM seals as standard.



PVC BALL VALVE WITH PE SPIGOT ENDS

| Size | CODE PVC-U | |
|------|------------|-----|
| 20 | M 326.0200 | MTO |
| 25 | M 326.0250 | MTO |
| 32 | M 326.0320 | MTO |
| 40 | M 326.0400 | MTO |
| 50 | M 326.0500 | MTO |
| 63 | M 326.0630 | MTO |



IMPERIAL DOUBLE UNION BALL NON RETURN VALVE PLAIN

| Size | CODE PVC-U | |
|--------|------------|--|
| 3/8" | I 21N.0160 | |
| 1/2" | I 21N.0200 | |
| 3/4" | I 21N.0250 | |
| 1" | I 21N.0320 | |
| 1 1/4" | I 21N.0400 | |
| 1 1/2" | I 21N.0500 | |
| 2" | I 21N.0630 | |



FOOT VALVE FILTER

| Size | CODE PVC-U | |
|--------|------------|--|
| 3/4" | T FLT.0250 | |
| 1" | T FLT.0320 | |
| 1 1/4" | T FLT.0400 | |
| 1 1/2" | T FLT.0500 | |
| 2" | T FLT.0630 | |



WAFER CHECK VALVE

| Size | CODE PVC-U | |
|-----------|------------|--|
| 50/1 1/2" | M CLP.0500 | |
| 63/2" | M CLP.0630 | |
| 75/2 1/2" | M CLP.0750 | |
| 90/3" | M CLP.0900 | |
| 110/4" | M CLP.1100 | |
| 140/5" | M CLP.1400 | |
| 160/6" | M CLP.1600 | |
| 225/8" | M CLP.2250 | |
| 280/10" | M CLP.2800 | |
| 315/12" | M CLP.3150 | |



IMPERIAL SOLVENT DOUBLE UNION AIR RELEASE VALVE PLAIN

| Size | CODE PVC-U | |
|--------|------------|--|
| 3/8" | I 21A.0160 | |
| 1/2" | I 21A.0200 | |
| 3/4" | I 21A.0250 | |
| 1" | I 21A.0320 | |
| 1 1/4" | I 21A.0400 | |
| 1 1/2" | I 21A.0500 | |
| 2" | I 21A.0630 | |



METRIC SOLVENT DOUBLE UNION AIR RELEASE VALVE PLAIN

| Size | CODE PVC-U | |
|------|------------|--|
| 16 | M 21A.0160 | |
| 20 | M 21A.0200 | |
| 25 | M 21A.0250 | |
| 32 | M 21A.0320 | |
| 40 | M 21A.0400 | |
| 50 | M 21A.0500 | |
| 63 | M 21A.0630 | |

Valves

All products on this page contain EPDM seals as standard.



**THREADED DOUBLE UNION AIR
RELEASE VALVE PLAIN**

| Size | CODE PVC-U |
|--------|---------------|
| 3/8" | T 22A.0160 |
| 1/2" | T 22A.0200 |
| 3/4" | T 22A.0250 |
| 1" | T 22A.0320 |
| 1 1/4" | T 22A.0400 |
| 1 1/2" | T 22A.0500 |
| 2" | T 22A.0630 |



**IMPERIAL DOUBLE UNION
SPRING CHECK VALVES PLAIN**

| Size | CODE PVC-U |
|--------|---------------|
| 1/2" | I 230.0200 |
| 3/4" | I 230.0250 |
| 1" | I 230.0320 |
| 1 1/4" | I 230.0400 |
| 1 1/2" | I 230.0500 |
| 2" | I 230.0630 |



**METRIC DOUBLE UNION
SPRING CHECK VALVES BSP**

| Size | CODE PVC-U |
|------|---------------|
| 20 | M 230.0200 |
| 25 | M 230.0250 |
| 32 | M 230.0320 |
| 40 | M 230.0400 |
| 50 | M 230.0500 |
| 63 | M 230.0630 |



**THREADED DOUBLE UNION
SPRING CHECK VALVES PLAIN**

| Size | CODE PVC-U |
|--------|---------------|
| 1/2" | T 230.0200 |
| 3/4" | T 230.0250 |
| 1" | T 230.0320 |
| 1 1/4" | T 230.0400 |
| 1 1/2" | T 230.0500 |
| 2" | T 230.0630 |

Actuated Valves

All products on this page contain EPDM seals as standard.



PNEUMATICALLY ACTUATED BALL VALVE PVC SPRING RETURN

PNEUMATICALLY ACTUATED BALL VALVE PVC DOUBLE ACTING

PNEUMATICALLY ACTUATED BALL VALVE ABS DOUBLE ACTING

PNEUMATICALLY ACTUATED BALL VALVE ABS SPRING RETURN

| Size | PVC-U Fail Safe Open | PVC-U Fail Safe Close |
|--------|----------------------|-----------------------|
| 1/2" | AQPI0200 | APPI0200 |
| 3/4" | AQPI0250 | APPI0250 |
| 1" | AQPI0320 | APPI0320 |
| 1 1/4" | AQPI0400 | APPI0400 |
| 1 1/2" | AQPI0500 | APPI0500 |
| 2" | AQPI0630 | APPI0630 |

| Size | PVC-U Fail Safe Open | PVC-U Fail Safe Close |
|------|----------------------|-----------------------|
| 20mm | AQPM0200 | APPM0200 |
| 25mm | AQPM0250 | APPM0250 |
| 32mm | AQPM0320 | APPM0320 |
| 40mm | AQPM0400 | APPM0400 |
| 50mm | AQPM0500 | APPM0500 |
| 63mm | AQPM0630 | APPM0630 |

| Size | PVC-U Double Acting |
|--------|---------------------|
| 1/2" | ARPI0200 |
| 3/4" | ARPI0250 |
| 1" | ARPI0320 |
| 1 1/4" | ARPI0400 |
| 1 1/2" | ARPI0500 |
| 2" | ARPI0630 |

| Size | PVC-U Double Acting |
|------|---------------------|
| 20mm | ARPM0200 |
| 25mm | ARPM0250 |
| 32mm | ARPM0320 |
| 40mm | ARPM0400 |
| 50mm | ARPM0500 |
| 63mm | ARPM0630 |

| Size | ABS Double Acting |
|--------|-------------------|
| 1/2" | ARAI0200 |
| 3/4" | ARAI0250 |
| 1" | ARAI0320 |
| 1 1/4" | ARAI0400 |
| 1 1/2" | ARAI0500 |
| 2" | ARAI0630 |

| Size | ABS Double Acting |
|------|-------------------|
| 20mm | ARAM0200 |
| 25mm | ARAM0250 |
| 32mm | ARAM0320 |
| 40mm | ARAM0400 |
| 50mm | ARAM0500 |
| 63mm | ARAM0630 |

| SIZE | ABS Safe Open | ABS Safe Close |
|--------|---------------|----------------|
| 1/2" | AQAI0200 | APAI0200 |
| 3/4" | AQAI0250 | APAI0250 |
| 1" | AQAI0320 | APAI0320 |
| 1 1/4" | AQAI0400 | APAI0400 |
| 1 1/2" | AQAI0500 | APAI0500 |
| 2" | AQAI0630 | APAI0630 |

| Size | ABS Safe Open | ABS Safe Close |
|------|---------------|----------------|
| 20mm | AQAM0200 | APAM0200 |
| 25mm | AQAM0250 | APAM0250 |
| 32mm | AQAM0320 | APAM0320 |
| 40mm | AQAM0400 | APAM0400 |
| 50mm | AQAM0500 | APAM0500 |
| 63mm | AQAM0630 | APAM0630 |

Actuated Valves

All products on this page contain EPDM seals as standard.



ELECTRICALLY ACTUATED BALL VALVE PVC

ELECTRICALLY ACTUATED BALL VALVE ABS

PNEUMATICALLY ACTUATED BUTTERFLY VALVE PVC SPRING RETURN

PNEUMATICALLY ACTUATED BUTTERFLY VALVE PVC DOUBLE ACTING

| Size | 110V/220V AC | 24V DC |
|--------|--------------|----------|
| 1/2" | A1PI0200 | A2PI0200 |
| 3/4" | A1PI0250 | A2PI0250 |
| 1" | A1PI0320 | A2PI0320 |
| 1 1/4" | A1PI0400 | A2PI0400 |
| 1 1/2" | A1PI0500 | A2PI0500 |
| 2" | A1PI0630 | A2PI0630 |

| Size | 110V/220V AC | 24V DC |
|--------|--------------|----------|
| 1/2" | A1AI0200 | A2AI0200 |
| 3/4" | A1AI0250 | A2AI0250 |
| 1" | A1AI0320 | A2AI0320 |
| 1 1/4" | A1AI0400 | A2AI0400 |
| 1 1/2" | A1AI0500 | A2AI0500 |
| 2" | A1AI0630 | A2AI0630 |

| Size | PVC-U Fail Safe Open | PVC-U Fail Safe Close |
|-----------|----------------------|-----------------------|
| 75/2 1/2" | AQPB0750 | APPB0750 |
| 90/3" | AQPB0900 | APPB0900 |
| 110/4" | AQPB1100 | APPB1100 |
| 140/5" | AQPB1400 | APPB1400 |
| 160/6" | AQPB1600 | APPB1600 |
| 225/8" | AQPB2250 | APPB2250 |

| Size | PVC-U Double Acting | |
|-----------|---------------------|----------|
| 75/2 1/2" | ARPB0750 | APPB0750 |
| 90/3" | ARPB0900 | APPB0900 |
| 110/4" | ARPB1100 | APPB1100 |
| 140/5" | ARPB1400 | APPB1400 |
| 160/6" | ARPB1600 | APPB1600 |
| 225/8" | ARPB2250 | APPB2250 |

| Size | 110V/220V AC | 24V DC |
|------|--------------|----------|
| 20mm | A1PM0200 | A2PM0200 |
| 25mm | A1PM0250 | A2PM0250 |
| 32mm | A1PM0320 | A2PM0320 |
| 40mm | A1PM0400 | A2PM0400 |
| 50mm | A1PM0500 | A2PM0500 |
| 63mm | A1PM0630 | A2PM0630 |

| Size | 110V/220V AC | 24V DC |
|------|--------------|----------|
| 20mm | A1AM0200 | A2AM0200 |
| 25mm | A1AM0250 | A2AM0250 |
| 32mm | A1AM0320 | A2AM0320 |
| 40mm | A1AM0400 | A2AM0400 |
| 50mm | A1AM0500 | A2AM0500 |
| 63mm | A1AM0630 | A2AM0630 |

Clamp Saddles

Supplied to distributor in box quantities.



CLAMP SADDLE WITH FOUR BOLTS

| D x G | CODE | BOX QTY |
|--------------|------------|---------|
| 63 x 1/2" | P.505.063B | 75 |
| 63 x 3/4" | P.505.063C | 75 |
| 63 x 1" | P.505.063D | 75 |
| 63 x 1 1/4" | P.505.063E | 70 |
| 63 x 1 1/2" | P.505.063F | 70 |
| 75 x 1/2" | P.505.075B | 50 |
| 75 x 3/4" | P.505.075C | 50 |
| 75 x 1" | P.505.075D | 50 |
| 75 x 1 1/4" | P.505.075E | 45 |
| 75 x 1 1/2" | P.505.075F | 45 |
| 75 x 2" | P.505.075G | 45 |
| 90 x 1" | P.505.090B | 40 |
| 90 x 3/4" | P.505.090C | 40 |
| 90 x 1" | P.505.090D | 40 |
| 90 x 1 1/4" | P.505.090E | 35 |
| 90 x 1 1/2" | P.505.090F | 35 |
| 90 x 2" | P.505.090G | 35 |
| 110 x 1/2" | P.505.110B | 25 |
| 110 x 3/4" | P.505.110C | 25 |
| 110 x 1" | P.505.110D | 25 |
| 110 x 1 1/4" | P.505.110E | 25 |
| 110 x 1 1/2" | P.505.110F | 25 |
| 110 x 2" | P.505.110G | 25 |
| 125 x 3/4" | P.505.125C | 30 |
| 125 x 1" | P.505.125D | 30 |
| 125 x 1 1/4" | P.505.125E | 30 |
| 125 x 1 1/2" | P.505.125F | 30 |
| 125 x 2" | P.505.125G | 30 |



DOUBLE CLAMP SADDLE WITH FOUR BOLTS

| D x G x G | CODE | BOX QTY |
|-----------------------|------------|---------|
| 63 x 1/2" x 1/2" | P.508.063B | 60 |
| 63 x 3/4" x 3/4" | P.508.063C | 60 |
| 63 x 1" x 1" | P.508.063D | 60 |
| 63 x 1 1/4" x 1 1/4" | P.508.063E | 60 |
| 63 x 1 1/2" x 1 1/2" | P.508.063F | 60 |
| 75 x 1/2" x 1/2" | P.508.075B | 40 |
| 75 x 3/4" x 3/4" | P.508.075C | 40 |
| 75 x 1" x 1" | P.508.075D | 40 |
| 75 x 1 1/4" x 1 1/4" | P.508.075E | 40 |
| 75 x 1 1/2" x 1 1/2" | P.508.075F | 40 |
| 75 x 2" x 2" | P.508.075G | 30 |
| 90 x 1/2" x 1/2" | P.508.090B | 25 |
| 90 x 3/4" x 3/4" | P.508.090C | 25 |
| 90 x 1" x 1" | P.508.090D | 25 |
| 90 x 1 1/4" x 1 1/4" | P.508.090E | 25 |
| 90 x 1 1/2" x 1 1/2" | P.508.090F | 25 |
| 90 x 2" x 2" | P.508.090G | 25 |
| 110 x 1/2" x 1/2" | P.508.110B | 15 |
| 110 x 3/4" x 3/4" | P.508.110C | 15 |
| 110 x 1" x 1" | P.508.110D | 15 |
| 110 x 1 1/4" x 1 1/4" | P.508.110E | 15 |
| 110 x 1 1/2" x 1 1/2" | P.508.110F | 15 |
| 110 x 2" x 2" | P.508.110G | 15 |
| 125 x 3/4" x 3/4" | P.508.125C | 15 |
| 125 x 1" x 1" | P.508.125D | 15 |
| 125 x 1 1/4" x 1 1/4" | P.508.125E | 15 |
| 125 x 1 1/2" x 1 1/2" | P.508.125F | 15 |
| 125 x 2" x 2" | P.508.125G | 15 |



CLAMP SADDLE WITH TWO BOLTS

| D x G | CODE | BOX QTY |
|-----------|------------|---------|
| 20 x 1/2" | P.505.020B | 150 |
| 25 x 1/2" | P.505.025B | 120 |
| 25 x 3/4" | P.505.025C | 120 |
| 32 x 1/2" | P.505.032B | 100 |
| 32 x 3/4" | P.505.032C | 100 |
| 32 x 1" | P.505.032D | 60 |
| 40 x 1/2" | P.505.040B | 60 |
| 40 x 3/4" | P.505.040C | 60 |
| 40 x 1" | P.505.040D | 60 |
| 50 x 1/2" | P.505.050B | 50 |
| 50 x 3/4" | P.505.050C | 50 |
| 50 x 1" | P.505.050D | 50 |



DOUBLE CLAMP SADDLE WITH TWO BOLTS

| D x G x G | CODE | BOX QTY |
|------------------|------------|---------|
| 20 x 1/2" x 1/2" | P.508.020B | 160 |
| 25 x 1/2" x 1/2" | P.508.025B | 120 |
| 25 x 3/4" x 3/4" | P.508.025C | 120 |
| 32 x 1/2" x 1/2" | P.508.032B | 80 |
| 32 x 3/4" x 3/4" | P.508.032C | 80 |
| 32 x 1" x 1" | P.508.032D | 60 |
| 40 x 1/2" x 1/2" | P.508.040B | 60 |
| 40 x 3/4" x 3/4" | P.508.040C | 60 |
| 40 x 1" x 1" | P.508.040D | 60 |
| 50 x 1/2" x 1/2" | P.508.050B | 50 |
| 50 x 3/4" x 3/4" | P.508.050C | 50 |
| 50 x 1" x 1" | P.508.050D | 50 |

Clamp Saddles



CLAMP SADDLE WITH SIX BOLTS

| D x G | CODE | BOX QTY |
|--------------|------------|---------|
| 140 x 1" | P.505.140D | 20 |
| 140 x 1 1/4" | P.505.140E | 20 |
| 140 x 1 1/2" | P.505.140F | 20 |
| 140 x 2" | P.505.140G | 20 |
| 140 x 2 1/2" | P.505.140H | 20 |
| 140 x 3" | P.505.140I | 20 |
| 160 x 1" | P.505.160D | 16 |
| 160 x 1 1/4" | P.505.160E | 16 |
| 160 x 1 1/2" | P.505.160F | 16 |
| 160 x 2" | P.505.160G | 16 |
| 160 x 3" | P.505.160I | 15 |
| 180 x 1 1/4" | P.505.180E | 8 |
| 180 x 1 1/2" | P.505.180F | 8 |
| 180 x 2" | P.505.180G | 8 |
| 180 x 3" | P.505.180I | 8 |
| 180 x 4" | P.505.180L | 6 |
| 200 x 1 1/4" | P.505.200E | 8 |
| 200 x 1 1/2" | P.505.200F | 8 |
| 200 x 2" | P.505.200G | 8 |
| 200 x 3" | P.505.200I | 8 |
| 200 x 4" | P.505.200L | 8 |
| 225 x 1 1/4" | P.505.225E | 7 |
| 225 x 1 1/2" | P.505.225F | 7 |
| 225 x 2" | P.505.225G | 7 |
| 225 x 3" | P.505.225I | 7 |
| 225 x 4" | P.505.225L | 7 |
| 250 x 1 1/4" | P.505.250E | 7 |
| 250 x 1 1/2" | P.505.250F | 7 |
| 250 x 2" | P.505.250G | 7 |
| 250 x 3" | P.505.250I | 7 |
| 250 x 4" | P.505.250L | 6 |
| 280 x 1 1/4" | P.505.280E | 3 |
| 280 x 1 1/2" | P.505.280F | 3 |
| 280 x 2" | P.505.280G | 3 |
| 280 x 3" | P.505.280I | 3 |
| 280 x 4" | P.505.280L | 3 |
| 315 x 1 1/4" | P.505.315E | 4 |
| 315 x 1 1/2" | P.505.315F | 4 |
| 315 x 2" | P.505.315G | 4 |
| 315 x 3" | P.505.315I | 4 |
| 315 x 4" | P.505.315L | 4 |

DOUBLE CLAMP SADDLE WITH SIX BOLTS

| D x G x G | CODE | BOX QTY |
|-----------------------|------------|---------|
| 140 x 1 1/4" x 1 1/4" | P.508.140E | 20 |
| 140 x 1 1/2" x 1 1/2" | P.508.140F | 20 |
| 140 x 2" x 2" | P.508.140G | 20 |
| 140 x 2 1/2" x 2 1/2" | P.508.140H | 16 |
| 140 x 3" x 3" | P.508.140I | 16 |
| 160 x 1" x 1" | P.508.160D | 12 |
| 160 x 1 1/4" x 1 1/4" | P.508.160E | 12 |
| 160 x 1 1/2" x 1 1/2" | P.508.160F | 12 |
| 160 x 2" x 2" | P.508.160G | 12 |
| 160 x 3" x 3" | P.508.160I | 12 |
| 160 x 4" x 4" | P.508.160L | 12 |
| 180 x 1 1/4" x 1 1/4" | P.508.180E | 8 |
| 180 x 1 1/2" x 1 1/2" | P.508.180F | 8 |
| 180 x 2" x 2" | P.508.180G | 8 |
| 180 x 3" x 3" | P.508.180I | 8 |
| 180 x 4" x 4" | P.508.180L | 8 |
| 200 x 1 1/4" x 1 1/4" | P.508.200E | 8 |
| 200 x 1 1/2" x 1 1/2" | P.508.200F | 8 |
| 200 x 2" x 2" | P.508.200G | 8 |
| 200 x 3" x 3" | P.508.200I | 8 |
| 225 x 1 1/4" x 1 1/4" | P.508.225E | 6 |
| 225 x 1 1/2" x 1 1/2" | P.508.225F | 6 |
| 225 x 2" x 2" | P.508.225G | 6 |
| 225 x 2 1/2" x 2 1/2" | P.508.225H | 6 |
| 225 x 3" x 3" | P.508.225I | 5 |
| 225 x 4" x 4" | P.508.225L | 4 |
| 250 x 1 1/4" x 1 1/4" | P.508.250E | 5 |
| 250 x 1 1/2" x 1 1/2" | P.508.250F | 5 |
| 250 x 2" x 2" | P.508.250G | 7 |
| 250 x 3" x 3" | P.508.250I | 5 |
| 250 x 4" x 4" | P.508.250L | 4 |
| 315 x 1 1/4" x 1 1/4" | P.508.315E | 4 |
| 315 x 1 1/2" x 1 1/2" | P.508.315F | 4 |
| 315 x 2" x 2" | P.508.315G | 4 |
| 315 x 3" x 3" | P.508.315I | 4 |
| 315 x 4" x 4" | P.508.315L | 3 |

Compression Fittings



REDUCING COUPLING

| D x G | CODE | BOX QTY |
|----------|------------|---------|
| 20 x 16 | P.512.020A | 260 |
| 25 x 20 | P.512.025B | 180 |
| 32 x 20 | P.512.032B | 110 |
| 32 x 25 | P.512.032C | 110 |
| 40 x 25 | P.512.040C | 70 |
| 40 x 32 | P.512.040D | 70 |
| 50 x 25 | P.512.050C | 40 |
| 50 x 32 | P.512.050D | 40 |
| 50 x 40 | P.512.050E | 40 |
| 63 x 32 | P.512.063D | 25 |
| 63 x 40 | P.512.063E | 25 |
| 63 x 50 | P.512.063F | 20 |
| 75 x 50 | P.512.075F | 15 |
| 75 x 63 | P.512.075G | 15 |
| 90 x 63 | P.512.090G | 12 |
| 90 x 75 | P.512.090H | 12 |
| 110 x 75 | P.512.110H | 6 |
| 110 x 90 | P.512.110I | 6 |



MALE ADAPTOR

| D x D | CODE | BOX QTY |
|-------------|------------|---------|
| 16 x 3/8" | P.511.016A | 500 |
| 16 x 1/2" | P.511.016B | 500 |
| 16 x 3/4" | P.511.016C | 500 |
| 20 x 1/2" | P.511.020B | 400 |
| 20 x 3/4" | P.511.020C | 400 |
| 25 x 1/2" | P.511.025B | 250 |
| 25 x 3/4" | P.511.025C | 250 |
| 25 x 1" | P.511.025D | 250 |
| 32 x 3/4" | P.511.032C | 150 |
| 32 x 1" | P.511.032D | 150 |
| 32 x 1 1/4" | P.511.032E | 150 |
| 40 x 1" | P.511.040D | 90 |
| 40 x 1 1/4" | P.511.040E | 90 |
| 40 x 1 1/2" | P.511.040F | 90 |
| 50 x 1 1/4" | P.511.050E | 55 |
| 50 x 1 1/2" | P.511.050F | 55 |
| 50 x 2" | P.511.050G | 55 |
| 63 x 1 1/2" | P.511.063F | 30 |
| 63 x 2" | P.511.063G | 30 |
| 63 x 2 1/2" | P.511.063H | 30 |
| 75 x 2" | P.511.075G | 25 |
| 75 x 2 1/2" | P.511.075H | 25 |
| 75 x 3" | P.511.075I | 25 |
| 90 x 2" | P.511.090G | 16 |
| 90 x 2 1/2" | P.511.090H | 16 |
| 90 x 3" | P.511.090I | 16 |
| 90 x 4" | P.511.090L | 16 |
| 110 x 3" | P.511.110I | 8 |
| 110 x 4" | P.511.110L | 8 |



90° ELBOW WITH THREADED MALE OFFTAKE

| D x G | CODE | BOX QTY | £ |
|-------------|------------|---------|---|
| 16 x 1/2" | P.519.016B | 400 | |
| 20 x 1/2" | P.519.020B | 260 | |
| 20 x 3/4" | P.519.020C | 260 | |
| 25 x 3/4" | P.519.025C | 180 | |
| 25 x 1" | P.519.025D | 180 | |
| 32 x 1" | P.519.032D | 110 | |
| 32 x 1 1/4" | P.519.032E | 110 | |
| 40 x 1 1/4" | P.519.040E | 60 | |
| 40 x 1 1/2" | P.519.040F | 60 | |
| 50 x 1 1/2" | P.519.050F | 35 | |
| 50 x 2" | P.519.050G | 35 | |
| 63 x 2" | P.519.063G | 20 | |
| 63 x 2 1/2" | P.519.063H | 20 | |
| 75 x 2 1/2" | P.519.075H | 14 | |
| 75 x 3" | P.519.075I | 14 | |
| 90 x 3" | P.519.090I | 10 | |
| 90 x 4" | P.519.090L | 10 | |
| 110 x 4" | P.519.110L | 5 | |



ADAPTOR WITH FEMALE THREADING

| D x D | CODE | BOX QTY |
|---------------|------------|---------|
| 16 x 3/8" | P.601.016A | 500 |
| 16 x 1/2" | P.601.016B | 500 |
| 20 x 1/2" | P.601.020B | 400 |
| 20 x 3/4" | P.601.020C | 340 |
| 25 x 1/2" | P.601.025B | 250 |
| 25 x 3/4" | P.601.025C | 250 |
| 25 x 1" | P.601.025D | 200 |
| 32 x 3/4" | P.601.032C | 150 |
| 32 x 1" | P.601.032D | 150 |
| 40 x 1" | P.601.040D | 90 |
| • 40 x 1 1/4" | P.601.040E | 90 |
| • 50 x 1 1/4" | P.601.050E | 55 |
| • 50 x 1 1/2" | P.601.050F | 55 |
| • 63 x 1 1/2" | P.601.063F | 30 |
| • 63 x 2" | P.601.063G | 30 |
| • 75 x 2" | P.601.075G | 25 |
| • 75 x 2 1/2" | P.601.075H | 25 |
| • 90 x 2" | P.601.090G | 16 |
| • 90 x 2 1/2" | P.601.090H | 16 |
| • 90 x 3" | P.601.090I | 16 |
| • 110 x 3" | P.601.110I | 8 |
| • 110 x 4" | P.601.110L | 8 |

•Metal Stiffening Ring on Female Thread

Compression Fittings



90° ELBOW WITH THREADED FEMALE OFF-TAKE

| D x G | CODE | BOX QTY |
|---------------|------------|---------|
| 20 x 1/2" | P.518.020B | 260 |
| 20 x 3/4" | P.518.020C | 260 |
| 25 x 1/2" | P.518.025B | 180 |
| 25 x 3/4" | P.518.025C | 180 |
| 25 x 1" | P.518.025D | 160 |
| 32 x 1/2" | P.518.032B | 110 |
| 32 x 3/4" | P.518.032C | 110 |
| 32 x 1" | P.518.032D | 110 |
| • 32 x 1 1/4" | P.518.032E | 90 |
| • 40 x 1 1/4" | P.518.040E | 60 |
| • 40 x 1 1/2" | P.518.040F | 60 |
| • 50 x 1 1/2" | P.518.050F | 35 |
| • 50 x 2" | P.518.050G | 35 |
| • 63 x 2" | P.518.063G | 20 |
| • 63 x 2 1/2" | P.518.063H | 20 |
| • 75 x 2 1/2" | P.518.075H | 14 |
| • 75 x 3" | P.518.075I | 14 |
| • 90 x 3" | P.518.090I | 10 |
| • 90 x 4" | P.518.090L | 10 |
| • 110 x 4" | P.518.110L | 5 |

• Off-take with metal stiffening ring



90° TEE

| D x G x D | CODE | BOX QTY |
|-----------------|------------|---------|
| 16 x 16 x 16 | P.514.0160 | 220 |
| 20 x 20 x 20 | P.514.0200 | 120 |
| 25 x 25 x 25 | P.514.0250 | 90 |
| 32 x 32 x 32 | P.514.0320 | 50 |
| 40 x 40 x 40 | P.514.0400 | 30 |
| 50 x 50 x 50 | P.514.0500 | 20 |
| 63 x 63 x 63 | P.514.0630 | 12 |
| 75 x 75 x 75 | P.514.0750 | 7 |
| 90 x 90 x 90 | P.514.0900 | 5 |
| 110 x 110 x 110 | P.514.1100 | 5 |



90° ELBOW

| D x G | CODE | BOX QTY |
|-----------|------------|---------|
| 16 x 16 | P.513.0160 | 360 |
| 20 x 20 | P.513.0200 | 200 |
| 25 x 25 | P.513.0250 | 150 |
| 32 x 32 | P.513.0320 | 80 |
| 40 x 40 | P.513.0400 | 50 |
| 50 x 50 | P.513.0500 | 30 |
| 63 x 63 | P.513.0630 | 15 |
| 75 x 75 | P.513.0750 | 11 |
| 90 x 90 | P.513.0900 | 8 |
| 110 x 110 | P.513.1100 | 4 |



COUPLING

| D x D | CODE | BOX QTY |
|-----------|------------|---------|
| 16 x 16 | P.510.0160 | 360 |
| 20 x 20 | P.510.0200 | 220 |
| 25 x 25 | P.510.0250 | 150 |
| 32 x 32 | P.510.0320 | 100 |
| 40 x 40 | P.510.0400 | 50 |
| 50 x 50 | P.510.0500 | 35 |
| 63 x 63 | P.510.0630 | 20 |
| 75 x 75 | P.510.0750 | 15 |
| 90 x 90 | P.510.0900 | 12 |
| 110 x 110 | P.510.1100 | 6 |



PLUG

| D | CODE | BOX QTY |
|-----|------------|---------|
| 16 | P.521.0160 | 500 |
| 20 | P.521.0200 | 400 |
| 25 | P.521.0250 | 250 |
| 32 | P.521.0320 | 150 |
| 40 | P.521.0400 | 90 |
| 50 | P.521.0500 | 60 |
| 63 | P.521.0630 | 30 |
| 75 | P.521.0750 | 28 |
| 90 | P.521.0900 | 22 |
| 110 | P.521.1100 | 8 |

Compression Fittings



90° ELBOW WITH THREADED MALE OFF-TAKE

| D x G x D | CODE | BOX QTY |
|------------------|------------|---------|
| 16 x 1/2" x 16 | P.516.016B | 240 |
| 20 x 1/2" x 20 | P.516.020B | 140 |
| 20 x 3/4" x 20 | P.516.020C | 140 |
| 25 x 3/4" x 25 | P.516.025C | 100 |
| 25 x 1" x 25 | P.516.025D | 100 |
| 32 x 1" x 32 | P.516.032D | 60 |
| 32 x 1 1/4" x 32 | P.516.032E | 60 |
| 40 x 1 1/4" x 40 | P.516.040E | 30 |
| 40 x 1 1/2" x 40 | P.516.040F | 30 |
| 50 x 1 1/2" x 50 | P.516.050F | 20 |
| 50 x 2" x 50 | P.516.050G | 20 |
| 63 x 2" x 63 | P.516.063G | 12 |
| 63 x 2 1/2" x 63 | P.516.063H | 12 |
| 75 x 2 1/2" x 75 | P.516.075H | 10 |
| 75 x 3" x 75 | P.516.075I | 10 |
| 90 x 3" x 90 | P.516.090I | 6 |
| 90 x 4" x 90 | P.516.090L | 6 |
| 110 x 4" x 110 | P.516.110L | 3 |



90° TEE WITH THREADED FEMALE OFF-TAKE

| D x G | CODE | BOX QTY |
|------------------|------------|---------|
| 16 x 3/8" x 16 | P.515.016A | 240 |
| 16 x 1/2" x 16 | P.515.016B | 240 |
| 20 x 1/2" x 20 | P.515.020B | 140 |
| 20 x 3/4" x 20 | P.515.020C | 140 |
| 25 x 3/4" x 25 | P.515.025C | 100 |
| 25 x 1" x 25 | P.515.025D | 100 |
| 25 x 1 1/2" x 25 | P.515.025B | 100 |
| 32 x 1" x 32 | P.515.032D | 60 |
| 32 x 1 1/4" x 32 | P.515.032E | 60 |
| 32 x 1 1/2" x 32 | P.515.032B | 60 |
| 32 x 3/4" x 32 | P.515.032C | 60 |
| 32 x 1" x 32 | P.515.032D | 60 |
| 32 x 1 1/4" x 32 | P.515.032E | 50 |
| 40 x 1" x 40 | P.515.040D | 30 |
| 40 x 1 1/4" x 40 | P.515.040E | 30 |
| 40 x 1 1/2" x 40 | P.515.040F | 30 |
| 50 x 1 1/2" x 50 | P.515.050F | 20 |
| 50 x 2" x 50 | P.515.050G | 20 |
| 63 x 2" x 63 | P.515.063G | 12 |
| 63 x 2 1/2" x 63 | P.515.063H | 12 |
| 75 x 2 1/2" x 75 | P.515.075H | 10 |
| 75 x 3" x 75 | P.515.075I | 10 |
| 90 x 3" x 90 | P.515.090I | 6 |
| 90 x 4" x 90 | P.515.090L | 6 |
| 110 x 4" x 110 | P.515.110L | 3 |

• Off-take with metal stiffening ring



90° REDUCED TEE

| D x G x D | CODE | BOX QTY |
|--------------|------------|---------|
| 25 x 20 x 25 | P.523.025B | 100 |
| 32 x 25 x 32 | P.523.032C | 60 |
| 40 x 32 x 40 | P.523.040D | 20 |
| 63 x 50 x 63 | P.523.063F | 15 |



JOINT WITH FLANGE

| D | CODE | BOX QTY |
|-------------|------------|---------|
| 75 x 2 1/2" | P.520.075H | 13 |
| 75 x 3" | P.520.075I | 13 |
| 90 x 3" | P.520.090I | 8 |
| 90 x 4" | P.520.090L | 8 |
| 110 x 4" | P.520.110L | 8 |



REDUCING PIECE

| D x G | CODE | BOX QTY |
|---------|------------|---------|
| 50 x 20 | P.517.050B | 120 |
| 50 x 25 | P.517.050C | 120 |



WALL BRACKETS

| Size | CODE | BOX QTY |
|-----------|------------|---------|
| 25 x 3/4" | P.524.025C | 150 |

PVC-U & ABS Imperial

Standards

Astore products are manufactured generally in accordance with the following standards:

PVC-U Pipe – BS EN 1452 (BSI Kitemark Approval)

ABS Pipe – BS 5391 part 1

PVC-U Fittings – BS 4346 part 1

ABS Fittings – BS 5392 part 1 (BSI Kitemark Approval)

All Optima Pipe, PVC-U Fittings and Valves are FDA 21 CFR 181.32 approved – BS EN 10226

Materials

Materials used for the manufacture of Astore pressure pipe fittings and valves are selected for their non toxic properties and suitability for potable water as required by the appropriate international authorities.

Both ABS and PVC-U comply with BS EN ISO 277 and the requirements of the World Health Organisation for potable water transportation.

ABS

All material used in our manufacture conforms to the toxicological requirements of the British Plastics Federation/British Industrial Biological Research Association Code of Practice for Food Usage 45/5. It also fulfils the EU requirements for plastics materials in contact with foodstuffs.

UK Water Regulations Advisory Scheme:



Approved materials for potable water.

Approval Numbers:

ABS pipe – 1611541

ABS Fittings and valves – 1611542

One-Step ABS Solvent Cement – 1606551

PVC-U

Tin stabilised compounds are used exclusively for PVC-U products and all formulations conform to the EU safety criteria for vinyl chloride monomer (CVN).

UK Water Regulations Advisory Scheme:



Approved materials for potable water.

Approval Numbers:

Optima PVC-U Pipe – 1510551

Premium PVC-U Pipe – 1803525

PVC-U Valves – 1505035

PVC-U Fittings & Valves – 1610500

One-Step PVC-U Solvent Cement – 1512500

RH THF Free PVC-U Solvent Cement – 1906508

Drinking Water Inspectorate

Astore PVC-U is approved for use within public water supplies and by the Secretary of State.

Astore PVC-U is listed in the 'list of approved products' published by the DWI. Astore manufactures two ranges of pipe. Only the Durapipe UK (RPR and RP1 codes) premium branded pipe is fully approved:

DWI Reg31 (UK & Wales) Reg33 (Scotland & N.I.)– Premium Pipe: 56.4.1226

DWI Reg31 (UK & Wales) Reg33 (Scotland & N.I.) – NGS: 56.4.1226

Gasket Seals and Seats

Gaskets are made from Nitrile Rubber, O-Ring seals are made from EPDM, seats are PTFE except where stated otherwise.

Pressure Ratings

All pressure ratings given are at a temperature of 20°C.

A high-angle, top-down photograph of a swimmer in a pool. The swimmer is wearing a white swim cap and dark swim trunks. They are in the middle of a stroke, with their arms extended forward and legs kicking. The water is a vibrant blue, and there are splashes around the swimmer. The lighting is bright, creating highlights on the water's surface and the swimmer's skin.

For further information on all
Astore UK products and services
contact our Customer Services
Team as detailed below.

Customer Services

Tel: 0844 800 5509

Fax: 01543 471682

www.astore.co.uk

Astore UK reserves the right to modify the details in this publication as products and specifications are updated and improved.

The content of this publication is for general information only and it is user's responsibility to determine the suitability of any product for the purpose intended.

The company reserves the right to substitute identical performing products from another range of greater or similar value where appropriate.

Astore UK is a trade name of Glynwed Pipe Systems Ltd.
Company Number 1698059

Astore UK, Swaffield Park, Hyssop Close, Cannock, Staffordshire. WS11 7FU
Telephone: 01543 471680
E-mail: sales@astore.co.uk
Website: www.astore.co.uk

