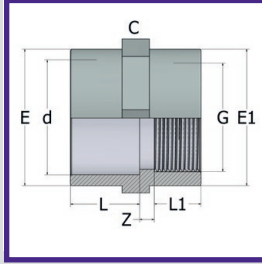


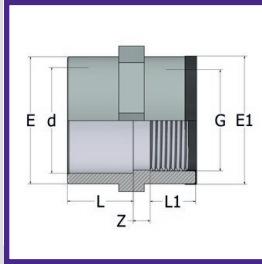
ABS PRESSURE FITTINGS PLAIN / THREADED (BSP)

SOCKET



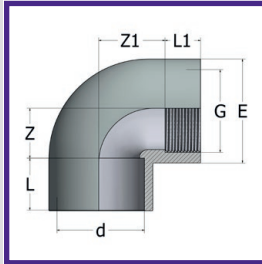
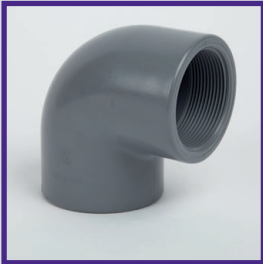
d x G	PART NO	L	L1	Z	E	E1	C	Wt (g)	Box
1/2"	011.012.02	16	15	4	28	28	30	11	350
3/4"	011.012.03	19	16.3	4	34	34	34	16	270
1"	011.012.04	22	19.1	5	42	42	42	24	300
1 1/4"	011.012.05	26	21.4	5	50	50	55	47	180
1 1/2"	011.012.06	31	21.4	5	61	61	65	75	120
2"	011.012.07	38	25.7	5	75	75	75	118	75
2 1/2"	011.012.08	44	30.2	5	88	89	92	161	45
3"	011.012.09	51	33.3	8	106	106	110	261	54
4"	011.012.10	61	39.3	8	132	129	134	382	30

SOCKET – S/S REINFORCED



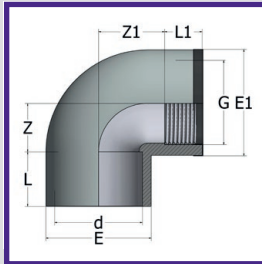
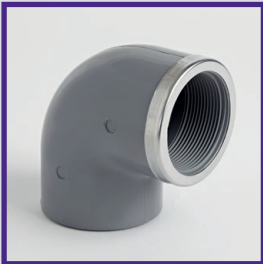
d x G	PART NO	L	L1	Z	E	E1	Wt (g)	Box
1/2"	011.342.02	16	15	4	28	29	16	400
3/4"	011.342.03	19	16.3	6	34	35	24	250
1"	011.342.04	22	19.1	6	42	43	37	300
1 1/4"	011.342.05	26	21.4	8	50.5	51.5	60	170
1 1/2"	011.342.06	31	21.4	13	61	62	97	100
2"	011.342.07	38	25.7	15	75	76	160	75

90° ELBOW



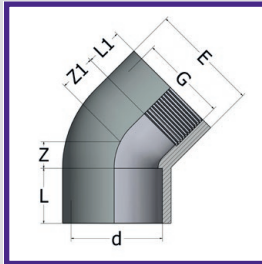
d x G	PART NO	L	L1	Z	Z1	E	Wt (g)	Box
1/2"	011.032.02	16	15	11	12	26.5	11	350
3/4"	011.032.03	19	16.3	14	16	32.5	20	400
1"	011.032.04	22	19.1	17	19.7	41	36	220
1 1/4"	011.032.05	26	21.4	23	24.9	50	54	120
1 1/2"	011.032.06	31	21.4	28	30.6	60	122	140
2"	011.032.07	38	25.7	34	37.6	75	233	70
2 1/2"	011.032.08	44	30.2	40	46.3	89	308	40
3"	011.032.09	51	33.3	48	53.8	106	538	25
4"	011.032.10	61	39.3	58	65.7	129	810	14

90° ELBOW – S/S REINFORCED



d x G	PART NO	L	L1	Z	Z1	E	E1	Wt (g)	Box
1/2"	011.352.02	16	15	11	12	26.5	27.5	15	350
3/4"	011.352.03	19	16.3	14	16.7	32.5	33.5	25	350
1"	011.352.04	22	19.1	17	19.9	41	42	44	200
1 1/4"	011.352.05	26	21.4	21	25.6	50	51	77	110
1 1/2"	011.352.06	31	21.4	26	35.6	60	61	140	125
2"	011.352.07	38	25.7	33	45.3	75	76	250	70

45° ELBOW



d x G	PART NO	L	L1	Z	Z1	E	Wt (g)	Box
1/2"	011.042.02	16	15	5.5	6.5	28	11	800
3/4"	011.042.03	19	16.3	6	8.7	34	19	500
1"	011.042.04	22	19.1	8	10.9	42	31	250
1 1/4"	011.042.05	26	21.4	10	14.6	51	54	150
1 1/2"	011.042.06	31	21.4	12	21.6	61	94	170
2"	011.042.07	38	25.7	15	27.3	75	181	90
2 1/2"	011.042.08	44	30.2	18	31.8	89	275	50
3"	011.042.09	51	33.3	21	38.7	106	410	30
4"	011.042.10	61	39.3	25	46.7	129	770	16

ABS

PVC IMPERIAL

PVC METRIC

POLYPROPYLENE

COMPRESSION FITTINGS

GUIDELINES