

REDUCING BUSH

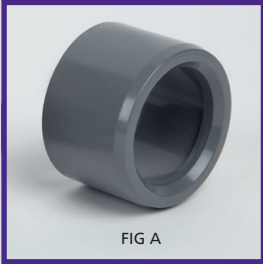


FIG A

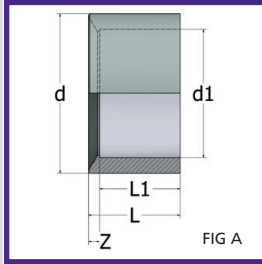


FIG A

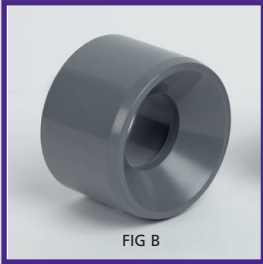


FIG B

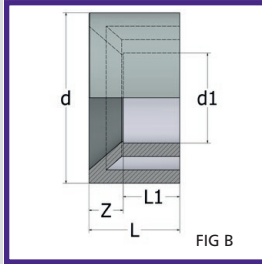
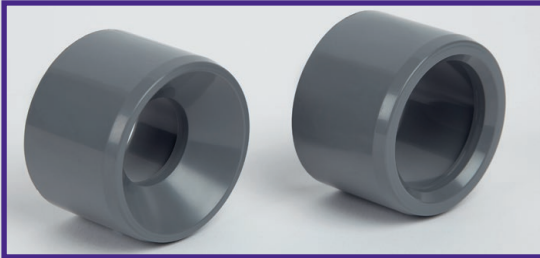
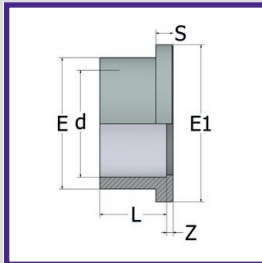
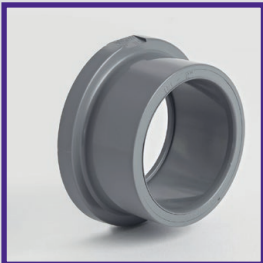


FIG B



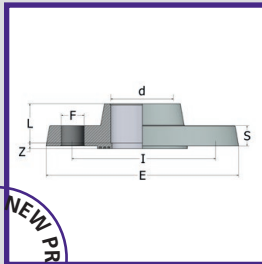
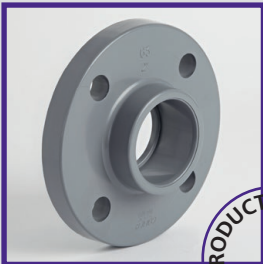
d x d1	PART NO	L	L1	Z	FIG	Wt (g)	Box
3/4" x 1/2"	011.091.0302	19	16	3	A	4	1000
1" x 1/2"	011.091.0402	22	16	6	A	12	550
1" x 3/4"	011.091.0403	22	19	3	A	8	550
1 1/4" x 1/2"	011.091.0502	26	16	10	B	23	300
1 1/4" x 3/4"	011.091.0503	26	19	7	A	22	300
1 1/4" x 1"	011.091.0504	26	22	4	A	15	250
1 1/2" x 3/4"	011.091.0603	31	19	12	B	29	350
1 1/2" x 1"	011.091.0604	31	22	9	B	32	350
1 1/2" x 1 1/4"	011.091.0605	31	26	5	A	17	350
2" x 1"	011.091.0704	38	22	16	B	52	180
2" x 1 1/4"	011.091.0705	38	26	12	B	53	180
2" x 1 1/2"	011.091.0706	38	31	7	A	41	180
2 1/2" x 1 1/2"	011.091.0806	44	31	13	B	89	110
2 1/2" x 2"	011.091.0807	44	38	6	A	75	110
3" x 1 1/2"	011.091.0906	51	31	20	B	159	65
3" x 2"	011.091.0907	51	38	13	B	137	65
3" x 2 1/2"	011.091.0908	51	44	7	A	116	65
4" x 2"	011.091.1007	61	38	23	B	205	36
4" x 2 1/2"	011.091.1008	61	44	17	B	266	36
4" x 3"	011.091.1009	61	51	10	A	246	36
5" x 3"	011.091.1109	76	51	25	B	455	40
5" x 4"	011.091.1110	76	61	115	B	410	40
6" x 4"	011.091.1210	86	61	25	B	683	21
8" x 6"	011.091.1312	119	86	33	B	1540	7

STUB FLANGE



d	PART NO	L	Z	S	E	E1	Wt (g)	Box
1/2"	011.111.02	16	3	6	27	34	8	700
3/4"	011.111.03	19	3	7	33	41	11	400
1"	011.111.04	22	3	7	41	50	17	250
1 1/4"	011.111.05	26	3	8	50	61	36	250
1 1/2"	011.111.06	31	3	8	61	73	54	180
2"	011.111.07	38	3	9	76	90	93	90
2 1/2"	011.111.08	44	3	10	90	106	120	120
3"	011.111.09	51	5	11	108	125	204	70
4"	011.111.10	61	5	12	131	150	271	45
5"	011.111.11	76	5	14	165	188	564	20
6"	011.111.12	88	7	14	193	217	821	14
8"	011.111.13	119	7	19	248	274	1573	6

UNIVERSAL DRILLED FULL FACE FLANGE



d	PART NO	L	Z	I	E	S	HOLES	Bolt Dia	Wt (g)	Box
2"	011.141.07-UNIV	38	4.5	125	165	18	4	M16	304	36
2 1/2"	011.141.08-UNIV	44	6	145	185	19	4	M16	391	15
3"	011.141.09-UNIV	51	7	160	200	20	8	M16	548	30
4"	011.141.10-UNIV	61	8	180	220	22	8	M16	650	24
6"•	011.141.12-UNIV	92	8	240	285	22	8	M20	1218	6

SUITABLE FOR TABLE D/E, NP10/16 & ASA150 (EXCEPT 4" WHICH IS NOT COMPATIBLE WITH ASA150).
WHILST SUITABLE FOR TABLE D/E & ASA150, 3" HAS 8 HOLES, SAME APPLIES FOR 4" TABLE D.



• NON COMER PRODUCT

ABS

PVC IMPERIAL

PVC METRIC

POLYPROPYLENE

COMPRESSION FITTINGS

GUIDELINES