

# HANSEN™

## True Fit Threaded Fittings



### Features & Benefits

- Large Range of Durable, High Strength, Commercial Quality True Fit Pipe Fittings
- Manufactured from UV Stabilised High Quality Glass Fibre Reinforced Nylon giving a weather, termite, fungi and bacterial resistance
- Material Approved for use with Potable (drinkable) Water
- An extensive range of fittings in sizes 6mm to 100mm (1/8" to 4")
- Precision Heavy Duty Tapered Threads give a Strong Reliable Seal.
- Material's strong enough to minimise potential cross threading.
- Fittings provide flexibility and versatility for new and existing installations, saving on time and money.

### Standards & Approvals



HANSEN™ True Fit Threaded Fittings from 6mm to 100mm have been approved in SGS Marine Certificate. The M&I division of SGS New Zealand Limited is the country's largest marine and industrial inspection, testing and Safe Ship Management service provider.

AS/NZS 4020

HANSEN™ True Fit Threaded Fittings from 6mm to 100mm have met the requirements of AS/NZS 4020 Australia & New Zealand drinking water test standard. See our website for details.



WRAS approval means that HANSEN™ True Fit Threaded Fittings are approved for use with potable (drinkable) water, and that they will not leach contaminants into the water. The Water Research Council in the UK is the highest recognised water testing organisation in the world and we believe HANSEN™ are the only plastic threaded pipe fitting in Australasia to achieve this standard.

Manukau City Approved Requirements

MANARC approval is the New Zealand Manukau City Council's system of maintaining the integrity of the public water supply, sewer, drainage and roading networks by allowing only the best products to be used. MANARC approval is recognised by all local bodies throughout New Zealand. Approved in sizes 6mm to 50mm

Rural



Agriculture



Horticulture



Irrigation



Domestic



Marine



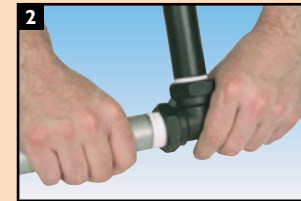
### Easy to Install



1.a Use a threaded paste sealant, we recommend LOCTITE 5331 or.....



1.b Use a teflon tape sealant. The right sealant for threaded joints is non-hardening, compatible with plastic and doesn't add slipperiness to encourage over-torquing.



2. Screw pipe into fitting.



3. Do not over tighten. The right way to assemble a Threaded Pipe Fitting is finger tight plus one to two turns - no more!

- All pipe work must be adequately supported.
- Use either a thread sealing paste or tape on all threaded connections, we recommend Loctite 5331
- For further technical information including chemical & temperature specifications, please visit our website: [www.hansenproducts.com](http://www.hansenproducts.com)

HANSEN PRODUCTS (NZ) LIMITED

PO Box 809 • Whangarei • New Zealand

P: +64 9 430 4140 F: +64 9 430 4141

E: [info@hansenproducts.com](mailto:info@hansenproducts.com)

W: [www.hansenproducts.com](http://www.hansenproducts.com)

Available From:

HANSEN™

Best Installed Value

# Best Installed Value

After the success of the Hansen Polythene Pipe Fittings, Hansen Products decided to design and manufacture a range of Threaded Pipe Fittings as there was a high demand for non-metallic threaded fittings. The Hansen range of *True Fit* Threaded Fittings is one of the largest ranges of durable, high strength, commercial quality Threaded Pipe Fittings in the Southern Hemisphere with over 250 products in the range.

Hansen *True Fit* Threaded Fittings are suitable for use above or below ground, in varying operating pressures and temperatures. They are Strong, Lightweight and Compact and are available in a variety of thread combinations and connections.

With over 50 years experience in manufacturing, Hansen Products knows the importance that pipe fittings play in the performance and control of fluid delivery, flow and pressure within a pipe system. This has seen Hansen Products build a reputation for providing high performance, easy to use, innovative, simple products that provide our customers with "Best Installed Value".

All Hansen products carry our Lifetime Warranty\*

\*For more information on our warranty, please visit [www.hansenproducts.com/legal.htm](http://www.hansenproducts.com/legal.htm)



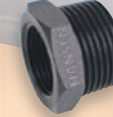
**Hex Nipple - SHN**

Sizes mm:	6	20	50
	8	25	65
	10	32	80
	15	40	100



**Reducing Hex Nipple - SRHN**

Sizes mm:	15 x 10	32 x 25	50 x 32	80 x 50
	8 x 6	20 x 10	40 x 20	50 x 40
	10 x 6	20 x 15	40 x 25	65 x 32
	10 x 8	25 x 15	40 x 32	65 x 40
	15 x 6	25 x 20	50 x 20	65 x 50
	15 x 8	32 x 20	50 x 25	80 x 40
				100 x 65
				100 x 80



**Reducing Bush - SRB**

Sizes mm:	25 x 8	32 x 20	50 x 25	80 x 50
	15 x 6	25 x 10	40 x 15	50 x 32
	15 x 8	25 x 15	40 x 20	50 x 40
	15 x 10	25 x 20	40 x 25	65 x 32
	20 x 8	32 x 15	40 x 32	65 x 40
	20 x 10	32 x 20	50 x 15	65 x 50
	20 x 15	32 x 25	50 x 20	80 x 40



**Hex Screw Plug - SP**

Sizes mm:	6	20	50
	8	25	65
	10	32	80
	15	40	100



**Hex Socket - SS**

Sizes mm:	15	32	65
	20	40	80
	25	50	100



**Reducing Hex Socket - SRS**

Sizes mm:	32 x 20	40 x 32	50 x 40	80 x 65
	20 x 15	32 x 25	50 x 20	65 x 40
	25 x 15	40 x 20	50 x 25	65 x 50
	25 x 20	40 x 25	50 x 32	80 x 50



**Female Threaded Elbow - SE**

Sizes mm:	15	32	65
	20	40	80
	25	50	100



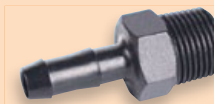
**Hex Screw Cap - SC**

Sizes mm:	15	32	65
	20	40	80
	25	50	100



**Male Hose Tail - SMHT**

Sizes mm:	6	15	32	80
	8	20	40	
	10	25	50	



**Reducing Male Hose Tail - SRMHT**

Sizes mm:	8 x 6	10 x 6
	8 x 10	10 x 8



**Male/Female Threaded Elbow - SMFE**

Sizes mm:	15	32
	20	40
	25	50



**Female Threaded Tee - ST**

Sizes mm:	15	32	65
	20	40	80
	25	50	100



**Nut & Hose Tail - SNT**

Sizes mm:	15	25	32	80
	20	25 x 15	40	
	20 x 15	25 x 20	50	



**Nut & Tail Elbow - SNTE**

Sizes mm:	20
	25



**Male Tank Fitting - White - STF(W)  
Male Tank Fitting - Black - STF(B)**

Sizes mm:	15	25	40
	20	32	50



**Female Tank Fitting - SFTFT\*  
Female Tank Fitting - SFTFT(RW)\***

Sizes mm:	15	25	40	80
	20	32	50	100



**Back Nut White - SBN(W)  
Back Nut Black - SBN(B)**

Sizes mm:	15	25	40
	20	32	50

\* SFTFT comes with 1 x LDPE and 1 x Rubber Washer. SFTFT(RW) comes with 2 x Rubber Washers.



**Large Back Nut - SBNL**

**Large Back Nut Left Hand - SN(LH)\***

Sizes mm:	15	25	40	80*
	20	32	50	100*



**Tank Plug - TP**

Sizes mm:	50
-----------	----



**Male Female Adaptor - SMFA**

Sizes mm:	15 x 20
-----------	---------



**Barrel Union - SBU**

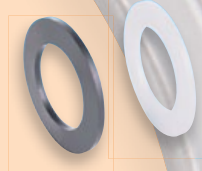
Sizes mm:	15	25	32	40
	20	25 x 20	32 x 25	50



**Tow Eye - HTE**

Sizes mm:	50 NPT
	50 BSP

## WASHERS



### Male Tank Fitting Washers:

- Black Rubber - SW(B)
- White Rubber - SWR(W)
- Black LDPE - SW(PB)
- White LDPE - SW(P)

Sizes mm:	15	32
	20	40
	25	50

### Female Tank Fitting Washers:

- Black Rubber - SWLR
- Black LDPE - SWLP

Sizes mm:	15	32	80
	20	40	100
	25	50	

### Nut & Hose Tail Washers:

- Black Rubber - SNTW

Sizes mm:	15	32	80
	20	40	
	25	50	

LDPE = Low Density Polyethylene

## CONVERSIONS

6mm - 1/8"	32mm - 1 1/4"
8mm - 1/4"	40mm - 1 1/2"
10mm - 3/8"	50mm - 2"
15mm - 1/2"	65mm - 2 1/2"
20mm - 3/4"	80mm - 3"
25mm - 1"	100mm - 4"