

About:

PLASSON have one of the widest ranges of pipe fittings in the world with sizes ranging from 16mm to 900mm, pressure ratings 0 bar to 25 bar, accepting nearly all existing pipe ranges, metric and imperial including polyethylene, lead, copper and galvanised. PLASSON have a 50 year in the ground track record for its products. We pride ourselves not only on the quality of our fittings but also on our high standard of service, delivery and aftersales support.

Product Range:

- mechanical
- pushfit
- electrofusion
- valves
- metering
- repair clamps
- threaded
- tools/accessories
- specialist ef tooling

Contact Us:

Plasson UK Ltd
 Plasson House
 27 Albert Drive
 Burgess Hill
 West Sussex
 RH15 9TN

Tel: 01444 244446
 Fax: 01444 258683
 sales@plasson.co.uk

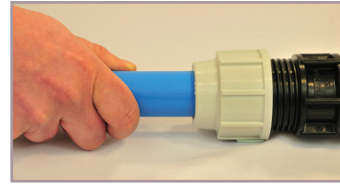
Mechanical Fitting Instructions

Metric

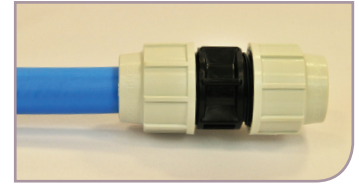
Metric Fittings 20mm - 110mm and Imperial Fittings 1/2" - 2"



Insert liner into pipe (metric 20mm-63mm only) and slacken nut until half the thread is visible.



Push pipe into body, through the nut, split ring, and 'O' ring.



Tighten nut firmly: Hand tight on pipe 20mm (3/4") - 32mm (1"), on pipe 40mm (1 1/4") and above use a PLASSON wrench.

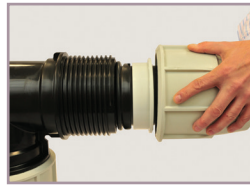
Note: For diameters 40mm and above, chamfering and lubrication of the pipe will ease insertion (use silicon lubricant). Metric fitting shown for illustrative purposes. Imperial fittings have black nuts.



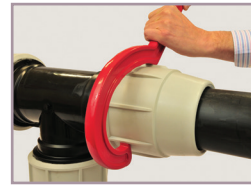
Metric Fittings - 125mm



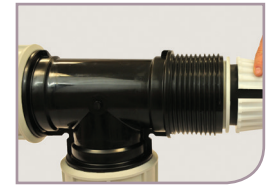
Draw the nut, collars, and 'O' ring over the end of the pipe to a distance of approx. 250mm (put the white split ring to one side for later use).



Insert the pipe into the body of the fitting until it meets the interior stop. Then draw the 'O' ring and collars close to the body of the fitting.



Tighten the nut with a PLASSON wrench until the 'O' ring and collars enter the fitting and reach their end position. Unscrew nut from fitting.



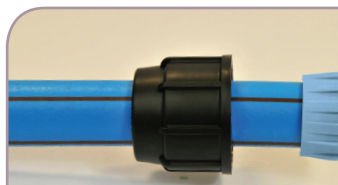
Open the white split ring and mount onto pipe with larger side against the collar ensuring that both parts meet the body of the fitting. Screw the nut tightly onto the fitting using a PLASSON wrench.

Metric Fittings - 160mm

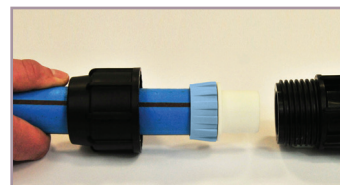
- Undo and take out nuts & bolts.
- Take the two shell halves apart, remove the exposed sleeve & 'O' ring and place over the pipe end.
- Push the body of the fitting completely home over the pipe end.
- Place the two shell halves with grip rings over the pipe & fitting body.
- Insert bolts, washers, and nuts and tighten until the shells are in contact with each other.



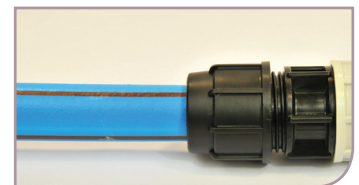
PlasShield Adaptor



Remove the grey nut and white grip ring from the fitting, discard. Mount black nut from kit on pipe and assemble grip ring from kit flush with pipe end.



Push the barbed end of the adaptor into the pipe until it meets the stop. Then push the plain end of the adaptor into the fitting until it meets the stop.



Screw nut tightly towards the body of the fitting using a PLASSON wrench.

Note: When used in buried applications, it may be necessary to wrap the fitting with aluminium foil tape & petrolatum tape or waterproof tape as required by your local water utility company.