



# Electrofusion Fittings & Specialist Tooling

September 2016 (4.0mm pin)



### Plasson Electrofusion Fittings

Plasson fittings are specifically designed for reliable, high performance pipe joining and long system life. The combination of quality, durability and ease of use has been shown to be the most economical for both installer and network owner.

#### Features

- 4.0mm pin size.
- Plasson fittings will weld to PE80, PE100, PE100-RC and PEX-A pipes.
- Fittings available to weld to thin walled pipes up to SDR41.
- Long fusion zones provide high strength joints.
- Large cold zones ensure quality welds .
- Suitable for use with Plasson SmartFuse, Fusamatic and non-Fusamatic controllers.
- Barcode and Plasson SmartFuse automation reduces potential for errors in set up.
- Profiled fitting body to spread stresses and extend long service life.
- Range includes unique products to simplify the task.
- Single weld time for ambient temperature range from -10°C to +45°C, no time adjustment required.
- PE coated welding wire ensures consistency of material in the joint to strengthen the weld.
- Welding wire is precision laid in the fitting to provide even heat distribution.
- Larger fittings have protected pins to minimise the possibility of damage during handling.
- Saddle fittings have an under part - no top loading tool is required to fit them.
- Tees and elbows to 250mm are available, reducing time and installation costs.
- WRAS approved, contact us for full details.
- Fittings BS EN 12201 and BS EN 1555 approved.

### The SmartFuse System - Plasson Electrofusion

Plasson Electrofusion fittings can be used with Plasson's computerised SmartFuse System control box or with Fusamatic control boxes.

#### SmartFuse System Features

- Automatic recognition of fusion time eliminates the risks of errors in manual time input.
- Computerised Data Retrieval allows quality control through the analysis of measurements and records.
- Improved weld quality through Smart design of cold zones, fitting body profile and improved heat control.
- Dynamic monitoring of electrical performance identifies anomalies early minimising risk and re-work.
- Smart tooling minimises risk during welding and simplifies procedures.

Plasson fittings can also be welded by Barcode reading control boxes and by manual control boxes.

#### Control Box and Tooling

Plasson Control Boxes provide the optimum weld control and operational features with options for data collection and duty cycle. All controllers come with sophisticated monitoring systems to minimise risk when welding and maximise weld success. Plasson also offers tooling essential for a good weld: Rotary mechanical scrapers, Clamping systems, Re-rounding products and pipe cutting tools.



 **PLASSON**UK When Everything Comes Together

Plasson UK Ltd. Plasson House, Albert Drive, Burgess Hill, West Sussex RH15 9TN

[www.plasson.co.uk](http://www.plasson.co.uk)

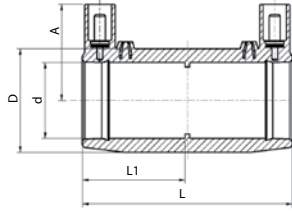
# index

Couplers .....	page 4-6
Flex Restraint .....	page 5
End Caps .....	page 7
Spigot Fittings .....	page 7-8
Flange Adaptors/Backing Rings .....	page 8-9
Tees .....	page 10-11
Elbows .....	page 12-13
Saddles .....	page 14-17
Transitions Fittings .....	page 18-19
Wastewater Fittings .....	page 20-22
Tools .....	page 23-25
Technical Information .....	page 26
Contacts .....	page 27

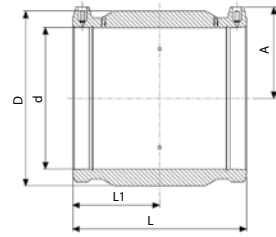
### 490104 EF Coupler PN16



20mm up to 75mm



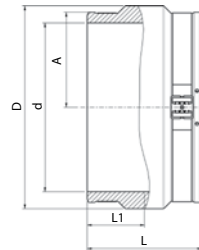
90mm up to 400mm



Code	£ ea	Size d	L	L1	D	A	W	Box Qty
490104020	6.77	20	76	37	31	34	50	440
490104025	6.77	25	82	40	36	37	40	360
490104032	6.77	32	88	42	44	42	63	256
490104040	10.14	40	97	47	56	46	97	200
490104050	10.44	50	101	49	67	51	147	132
490104063	12.55	63	117	57	82	57	230	72
490104075	19.27	75	126	61	98	64	340	60
490104090	19.44	90	148	73	112	71	566	38
490104110	29.80	110	163	80	135	81	718	23
490104125	34.14	125	173	85	157	87	1075	18
490104140	43.79	140	183	90	174	97	1295	12
490104160N	53.39	160	195	93	194	105	1550	6
490104180N	62.99	180	212	105	218	116	2112	5
490104200N	89.39	200	223	109	242	126	2785	4
490104225N	101.36	225	240	119	272	138	3900	4
490104250	146.04	250	251	123	311	156	4461	2
490104280	220.97	280	275	134	340	170	6440	1
490104315	244.90	315	282	139	387	184	8845	1
490104355	447.71	355	277	137	431	203	10200	1
490103400	489.56	400	293	145	485	231	13800	1

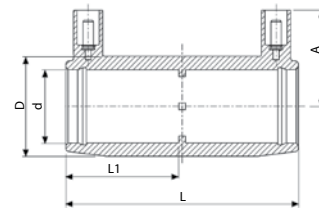
### 490103 EF Coupler PN16

Large Diameter



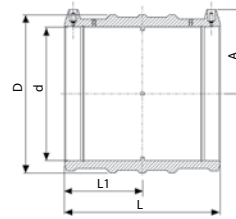
Code	£ ea	Size d	L	L1	D	A	W	Box Qty
490103450	740.00	450	306	153	539	257	15800	1
490103500	1,400.00	500	340	170	603	283	20200	1
490103560	1,995.00	560	376	188	674	317	28000	1
490103630	3,130.00	630	418	209	759	356	39200	1
490103710	4,260.00	710	472	236	853	400	55700	1
490103800	5,700.00	800	500	250	955	450	87000	1

### 4901L4 EF Long Coupler



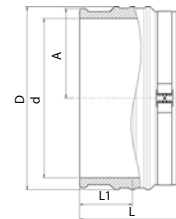
Code	£ ea	Size d	L	L1	D	A	W	Box Qty
4901L4032	9.92	32	104	50	44	43	84	272
4901L4040	11.97	40	121	59	56	46	135	128
4901L4050	15.06	50	139	68	68	51	215	96
4901L4063	17.79	63	166	81	82	57	317	48

### 460104 EF LightFit Coupler PN10



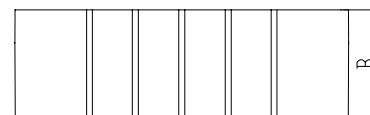
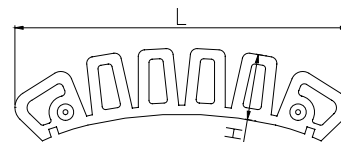
Code	£ ea	Size d	L	L1	D	A	W	Box Qty
460104040	10.14	40	90	43	56	47	96	200
460104050	10.44	50	100	49	68	52	98	132
460104063	11.68	63	118	57	77	57	157	112
460104075	17.70	75	126	61	90	63	215	60
460104090	19.11	90	148	72	108	69	360	44
460104110	24.49	110	163	80	131	79	540	25
460104125	30.58	125	173	85	149	87	740	20
460104140	32.92	140	182	89	167	94	970	12
460104160	35.95	160	198	97	193	104	1320	6
460104180	50.40	180	212	104	215	114	1650	5
460104200	65.12	200	232	114	235	127	2100	4
460104225	83.52	225	240	118	264	141	2825	4
460104250	116.08	250	256	126	293	155	3728	2
460104280	168.75	280	275	135	332	166	4850	1
460104315	191.96	315	284	140	374	184	6950	1
460104355	271.79	355	280	138	421	204	7980	1
460104400	374.79	400	296	146	474	227	11893	1

### 460103 EF LightFit Coupler PN10 Large Diameter



Code	£ ea	Size d	L	L1	D	A	W	Box Qty
460103450	620.00	450	310	155	518	255	11700	1
460103500	1,160.00	500	340	170	576	283	16000	1
460103560	1,660.00	560	376	188	645	317	21500	1
460103630	2,400.00	630	448	209	726	356	30820	1
460103710	3,275.00	710	472	236	817	400	43100	1
460103800	4,100.00	800	500	250	913	450	57300	1
TBC	TBC	900						

### 49009 EF Flex Restraint 160 - 1600mm



Code	£ ea	Size	L	H	B	W	Box Qty
49009999	160.55	160-1600	202	40	65	251	60

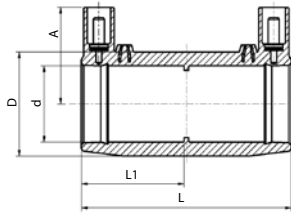
The Flex Restraint is used where axial restraint of PE pipe is required. The restraint is a flexible bar, which is fused to the pipe by electrofusion to create a welded shoulder that can restrain the axial movement of pipes in various applications:

- Anchoring the pipe to a concrete wall such as a manhole or tank.
- Restraining the pipe to a gasket bell fitting to facilitate cross connection with other piping systems.
- Blocking pipe movement after slip-lining.

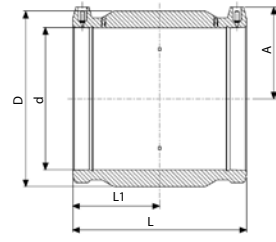
### 450104 EF Coupler PN25



50mm up to 75mm



90mm up to 315mm

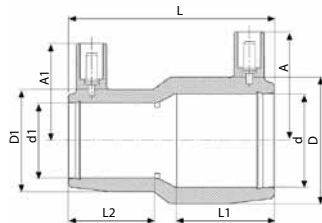


Code	£ ea	Size d	L	L1	D	A	W	Box Qty
450104050	12.80	50	100	49	68	52	147	132
450104063	13.80	63	118	57	82	58	230	72
450104075	22.16	75	126	62	97	65	339	60
450104090	24.40	90	148	73	117	69	571	38
450104110	34.27	110	163	80	140	79	835	23
450104125	39.26	125	173	85	157	87	1075	18
450104160	61.40	160	198	97	198	105	1780	6
450104180	72.44	180	212	104	224	114	2449	4
450104200	102.80	200	223	110	249	126	3295	4
450104225	116.56	225	240	118	280	140	4366	4
450104250	167.95	250	256	127	310	155	5507	2
450104280	254.12	280	274	135	341	166	6369	1
450104315	281.64	315	284	140	381	184	8884	1

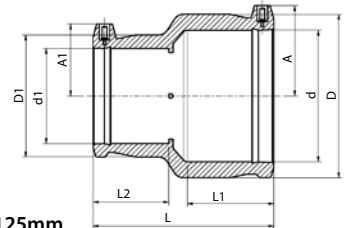
### 491104 EF Reducing Coupler



25 x 20mm up to 110 x 90mm

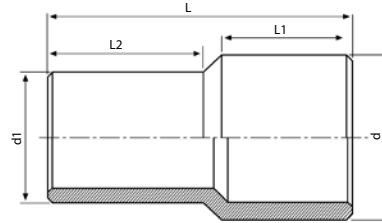


125 x 90mm up to 180 x 125mm



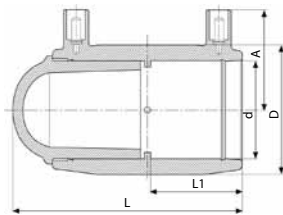
Code	£ ea	Size dxd1	L	A	A1	L1	L2	D	D1	W	Box Qty
491104025020	6.80	25 x 20	71	39	39	35	35	36	36	46	480
491104032020	6.80	32 x 20	81	43	37	40	35	45	32	59	360
491104032025	7.95	32 x 25	81	43	39	40	35	45	36	56	360
491104040025	13.95	40 x 25	90	47	38	44	40	56	37	85	200
491104040032	13.95	40 x 32	90	47	43	44	40	56	44	92	160
491104050025	20.11	50 x 25	100	52	41	49	41	68	37	118	160
491104050032	20.11	50 x 32	100	52	45	49	40	68	45	123	128
491104050040	20.11	50 x 40	100	52	48	49	44	68	56	135	128
491104063032	20.07	63 x 32	119	59	45	57	40	82	45	179	96
491104063040	20.07	63 x 40	119	59	49	57	44	82	56	192	96
491104063050	20.07	63 x 50	119	59	54	57	49	82	68	223	80
491104075063	22.85	75 x 63	126	66	59	66	57	98	82	214	65
491104090050	25.81	90 x 50	143	78	53	71	49	116	69	430	54
491104090063	25.81	90 x 63	143	78	61	71	57	116	82	460	44
491104090075	25.81	90 x 75	143	78	67	71	61	116	98	480	41
491104110063	36.30	110 x 63	161	84	61	78	57	139	82	639	32
491104110090	36.30	110 x 90	161	84	74	78	72	139	116	740	23
491104125090	51.83	125 x 90	171	88	70	85	82	158	116	1019	18
491104125110	56.63	125 x 110	71	88	80	85	78	158	141	1025	18
491104160090	87.30	160 x 90	193	105	69	94	72	199	116	1440	12
491104160110	87.30	160 x 110	193	105	80	94	81	199	141	1520	12
491104160125	87.30	160 x 125	195	105	89	94	85	199	158	1570	6
491104180125	95.61	180 x 125	212	116	87	103	85	222	158	2060	6

## 491107 EF Spigot Reducer SDR11

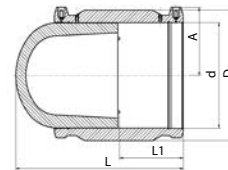


Code	£ ea	Size dxd1	L	L1	L2	W	Box Qty
491107050032	11.04	50 x 32	131	59	60	100	160
491107063032	15.09	63 x 32	131	59	58	110	144
491107063040	15.08	63 x 40	132	59	58	120	144
491107063050	15.09	63 x 50	132	60	60	125	128
491107075063	23.26	75 x 63	151	71	65	210	72
491107090050	31.76	90 x 50	156	81	59	280	56
491107090063	31.76	90 x 63	160	80	65	300	48
491107090075	31.76	90 x 75	166	80	71	320	40
491107110063	42.38	110 x 63	167	83	66	450	36
491107110075	42.38	110 x 75	169	83	72	460	36
491107110090	42.38	110 x 90	178	83	80	510	28
491107125063	51.21	125 x 63	202	90	66	650	24
491107125090	51.21	125 x 90	186	90	81	655	24
491107125110	51.21	125 x 110	188	90	84	730	18
491107140090	73.73	140 x 90	208	95	80	850	16
491107140110	73.73	140 x 110	195	95	83	850	16
491107140125	73.73	140 x 125	199	95	89	950	12
491107160090	98.42	160 x 90	258	110	89	1280	10
491107160110	98.65	160 x 110	255	115	89	1360	10
491107160125	98.65	160 x 125	255	110	97	1470	10
491107160140	98.42	160 x 140	255	107	104	1530	10
491107180090	121.12	180 x 90	245	107	85	1500	10
491107180125	121.12	180 x 125	221	107	89	1500	10
491107180160	121.12	180 x 160	225	107	100	1750	8
491107200160	139.43	200 x 160	233	115	100	2180	6
491107200180	139.43	200 x 180	241	116	106	2350	5
491107225200	214.80	225 x 200	272	126	120	3255	1
491107250180	272.20	250 x 180	316	151	105	4050	1
491107250200	272.20	250 x 200	324	151	116	4380	1

## 491204 EF End Cap



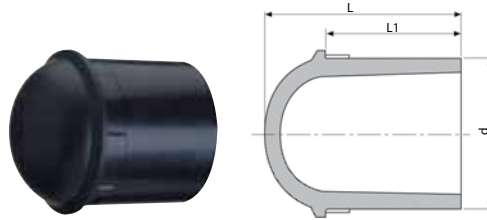
20mm up to 75mm



90mm up to 315mm

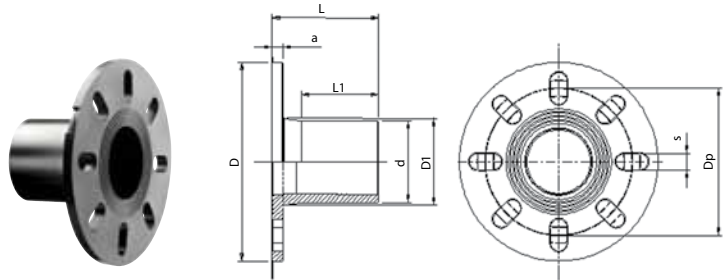
Code	£ ea	Size d	L	L1	D	A	W	Box Qty
491204020	12.03	20	84	37	31	34	55	400
491204025	12.89	25	92	40	36	37	50	400
491204032	14.10	32	103	42	44	42	76	300
491204040	16.40	40	114	47	56	46	130	160
491204050	23.98	50	121	49	67	51	204	120
491204063	27.13	63	142	57	82	57	327	72
491204075	49.55	75	156	61	98	64	499	48
491204090	55.86	90	183	73	117	70	820	30
491204110	80.25	110	206	78	140	81	1259	20
491204125	90.09	125	222	85	157	87	1702	15
491204140	102.99	140	237	90	174	97	2346	10
491204160	135.75	160	261	93	194	105	2990	6
491204180	177.30	180	283	105	218	116	4159	5
491204200	215.59	200	289	109	242	126	5260	4
491204225	227.07	225	318	119	272	138	7260	2
491204250	272.80	250	344	123	311	156	8381	1
491204315	614.85	315	405	139	387	184	16045	1

### 491207 EF Spigot End Plug SDR11



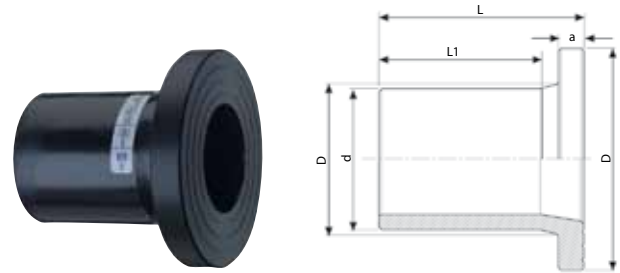
Code	£ ea	Size d	L	L1	W	Box Qty
491207032	3.78	32	52	39	17	960
491207050	5.34	50	68	48	52	352
491207063	10.03	63	81	57	94	192
491207075	11.25	75	90	60	149	132
491207090	18.76	90	105	70	250	72
491207110	25.67	110	121	78	430	57
491207125	31.29	125	131	82	596	36
491207140	36.67	140	142	87	797	25
491207160	50.05	160	157	94	1149	18
491207180	59.45	180	172	101	1600	14
491207200	154.54	200	178	112	2089	10
491207225	169.94	225	196	120	2800	6
491207250	218.00	250	216	130	3920	4
491207280	276.17	280	257	162	5300	3
491207315	378.55	315	262	167	7200	2

### 490209 Full Face Flange 90 SDR11



Code	£ ea	Size d	L	L1	D	D1	a	Dp	s	W	Box Qty
490209090	46.90	90	118	86	220	98	12	163	20	995	18

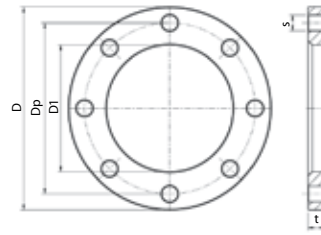
### 490207 EF Spigot Flange Adaptor SDR11



Code	£ ea	Size d	L	L1	a	D	D1	W	Box Qty
490207032	8.44	32	85	60	10	68	40	57	160
490207050	13.00	50	104	75	12	88	61	132	144
490207063	15.09	63	120	87	14	102	75	220	60
490207075	19.15	75	130	92	16	122	89	322	48
490207090	25.11	90	140	96	17	138	105	475	32
490207110	31.35	110	160	110	18	158	125	747	20
490207125	38.70	125	182	132	25	158	132	945	16
490207140	49.62	140	180	130	25	188	155	1290	12
490207160	55.48	160	180	130	25	212	175	1600	8
490207180	87.33	180	198	140	30	212	187	1990	8
490207200	99.74	200	200	135	32	268	232	3100	4
490207225	107.28	225	200	135	32	268	235	3360	4
490207250	164.84	250	215	145	35	320	285	5080	3
490207251	217.74	280	228	160	35	320	291	5625	2
490207315	276.50	315	238	160	35	370	335	7470	1

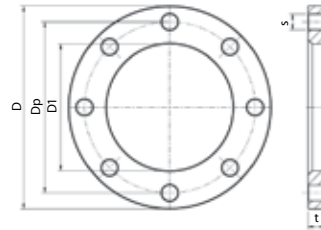


### 49029 EF Flange Backing Ring Plated



Code	£ ea	Size d	D	Dp	D1	s	t	No. of Holes
49029006	17.07	32 x 1"	115	85	42	14	9	4
49029007	19.09	50 x 1½"	150	110	62	18	9	4
49029008	19.61	63 x 2"	165	125	78	18	9	4
49029009	25.84	75 x 2½"	185	145	92	18	9	4
49029010	29.14	90 x 3"	200	160	108	18	9	8
49029020	30.70	110/125 x 4"	220	180	135	18	9	8
49029021	50.61	140 x 5"	250	210	158	18	10	8
49029040	52.37	160 x 6"	285	240	178	22	10	8
49029045	52.37	180 x 6"	285	240	188	22	10	8
49029050	85.05	200/225 x 8"	340	295	238	22	10	12
49029250	147.91	250 x 10"	405	335	288	26	16	12
49029280	147.91	280 x 10"	405	335	294	26	16	12
49029315	240.60	315 x 12"	460	410	338	26	16	12

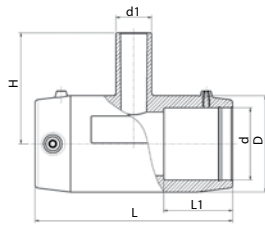
### 09903 EF PP Coated Flange Backing Ring Plastic Coated



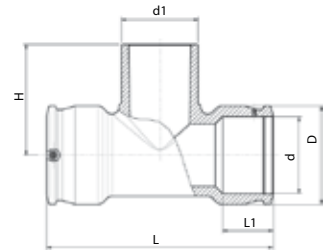
Code	£ ea	Size d	D	Dp	D1	s	t	No. of Holes
09903032	13.21	32 x 1"	115	85	42	14	16	4
09903050	19.16	50 x 1½"	150	110	62	18	18	4
09903063	23.91	63 x 2"	165	125	78	18	18	4
09903075	27.09	75 x 2½"	185	145	92	18	20	4
09903090	32.42	90 x 3"	200	160	108	18	20	8
09903110	44.16	110 x 4"	200	180	128	18	22	8
09903125	44.16	125 x 4"	220	180	135	18	22	8
09903140	55.54	140 x 5"	250	210	158	18	22	8
09903160	68.38	160 x 6"	285	240	178	22	24	8
09903180	68.38	180 x 6"	285	240	188	22	24	8
09903200	98.87	200 x 8"	340	295	235	22	24	8
09903225	98.87	225 x 8"	340	295	238	22	24	8
09903250	120.01	250 x 10"	395	350	288	22	26	12
09903280	120.01	280 x 10"	395	350	294	22	26	12
09903315	183.69	315 x 12"	445	400	338	22	26	12

Gaskets available in main catalogue pg8.

### 490404 EF 90° Tee



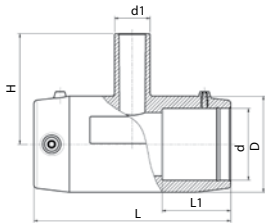
20mm up to 75mm



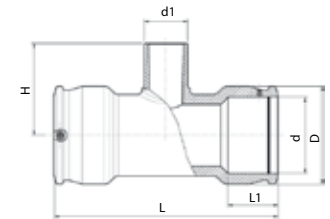
90mm up to 250mm

Code	£ ea	Size d	L	L1	D	H	A	W	Box Qty
490404020	14.87	20 x 20 x 20	96	37	33	60	39	60	260
490404025	14.71	25 x 25 x 25	103	39	44	66	43	109	168
490404032	15.82	32 x 32 x 32	104	39	44	74	43	96	144
490404040	24.52	40 x 40 x 40	120	43	56	90	47	165	96
490404050	29.90	50 x 50 x 50	139	48	68	102	52	257	56
490404063	33.61	63 x 63 x 63	167	58	82	119	58	417	32
490404075	50.57	75 x 75 x 75	196	63	96	129	62	638	26
490404090	57.98	90 x 90 x 90	294	71	113	137	71	1090	15
490404110	86.71	110 x 110 x 110	326	71	143	160	81	1955	8
490404125	111.51	125 x 125 x 125	382	86	165	177	88	2950	4
490404160	184.09	160 x 160 x 160	440	86	208	206	106	4700	3
490404180	206.17	180 x 180 x 180	422	106	245	250	116	7200	1
490404200	382.96	200 x 200 x 200	451	114	261	265	125	8650	1
490404225	435.17	225 x 225 x 225	494	122	293	290	140	11860	1
490404250	576.10	250 x 250 x 250	538	129	326	315	152	16250	1

### 491404 EF Reducing Tee



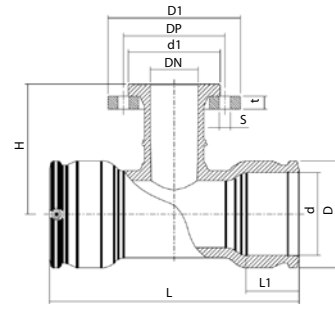
20mm up to 75mm



90mm up to 250mm

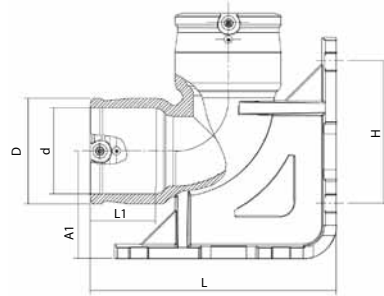
Code	£ ea	Size d	L	L1	D	H	A	W	Box Qty
491404025020	19.04	25 x 20 x 25	104	39	44	25	43	108	168
491404032020	19.04	32 x 20 x 32	104	39	44	32	43	89	144
491404032025	19.05	32 x 25 x 32	104	39	44	32	43	91	144
491404040025	23.01	40 x 25 x 40	120	43	56	40	47	150	96
491404040032	23.01	40 x 32 x 40	120	43	56	40	47	152	96
491404050020	30.41	50 x 20 x 50	139	48	68	50	52	224	64
491404050025	30.41	50 x 25 x 50	139	48	68	50	52	225	64
491404050032	30.41	50 x 32 x 50	139	48	68	50	52	228	64
491404063020	43.38	63 x 20 x 63	167	49	82	63	58	348	40
491404063032	43.38	63 x 32 x 63	167	58	82	63	58	353	32
491404063040	43.38	63 x 40 x 63	167	58	82	63	58	365	32
491404063050	43.38	63 x 50 x 63	167	58	82	63	58	381	32
491404075063	63.70	75 x 63 x 75	196	63	96	75	62	607	26
491404090063	81.35	90 x 63 x 90	294	68	113	90	71	1050	15
491404110063	178.18	110 x 63 x 110	326	71	143	110	81	1715	9
491404110090	137.46	110 x 90 x 110	326	71	143	110	81	1815	8
491404125090	156.37	125 x 90 x 125	382	86	165	125	88	2805	5
491404125110	168.11	125 x 110 x 125	382	86	165	125	88	2859	5
491404160090	246.55	160 x 90 x 160	440	86	208	160	106	4450	3
491404160110	246.55	160 x 110 x 160	440	86	208	160	106	4450	3
491404180090	338.56	180 x 90 x 180	422	106	245	180	116	6090	2
491404180125	338.56	180 x 125 x 180	422	106	245	180	116	6410	2
491404180160	338.56	180 x 160 x 180	422	106	245	180	116	6950	1
491404200110	430.58	200 x 110 x 200	451	114	261	200	125	7235	2
491404225110	486.02	225 x 110 x 225	494	122	293	225	140	10000	1
491404250110	642.93	250 x 110 x 250	538	129	326	250	152	13400	1

### 499404 EF Flanged Tee



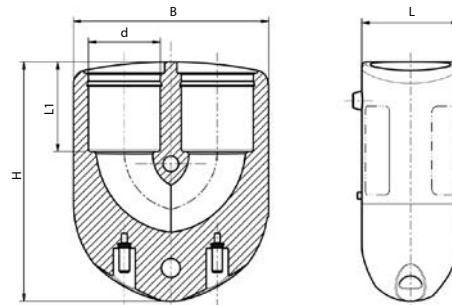
Code	£ ea	Size dxd1	L	L1	D	H	A	D1	t	s	d1	DP	W	Box Qty
499404090080	151.24	90 x 80 x 90	294	71	113	165	71	200	20	8 x 18	138	160	2835	8
499404110080	179.93	110 x 80 x 110	326	71	143	181	81	200	20	8 x 18	138	160	3560	6
499404110100	205.12	110 x 100 x 110	326	71	143	181	81	220	22	8 x 18	158	180	4240	6
499404125080	188.25	125 x 80 x 125	382	86	165	190	88	200	20	8 x 18	138	160	4550	4
499404125100	196.20	125 x 100 x 125	382	82	165	190	88	220	22	8 x 18	158	180	5180	3
499404160080	299.66	160 x 80 x 160	440	86	208	210	106	200	20	8 x 18	138	160	5345	3
499404160100	316.60	160 x 100 x 160	440	86	208	210	106	220	22	8 x 18	158	180	6785	3
499404180080	383.71	180 x 80 x 180	422	106	245	225	116	200	20	8 x 18	138	160	7745	2
499404180100	393.15	180 x 100 x 180	422	106	245	225	116	220	22	8 x 18	158	180	8550	1
499404200080	888.72	200 x 80 x 200	451	114	261	240	125	200	20	8 x 18	138	160	8510	1
499404200100	892.20	200 x 100 x 200	451	114	261	245	125	220	22	8 x 18	158	180	9230	1
499404225080	967.95	225 x 80 x 225	494	122	293	255	140	200	20	8 x 18	138	160	11240	1
499404225100	997.22	225 x 100 x 225	494	122	293	260	140	220	22	8 x 18	158	180	11900	1
499404250080	1251.45	250 x 80 x 250	538	129	326	270	152	200	20	8 x 18	138	160	14750	1
499404250100	1280.71	250 x 100 x 250	538	129	326	275	152	220	22	8 x 18	158	180	15400	1

### 491504 EF 90° Duck Foot Elbow



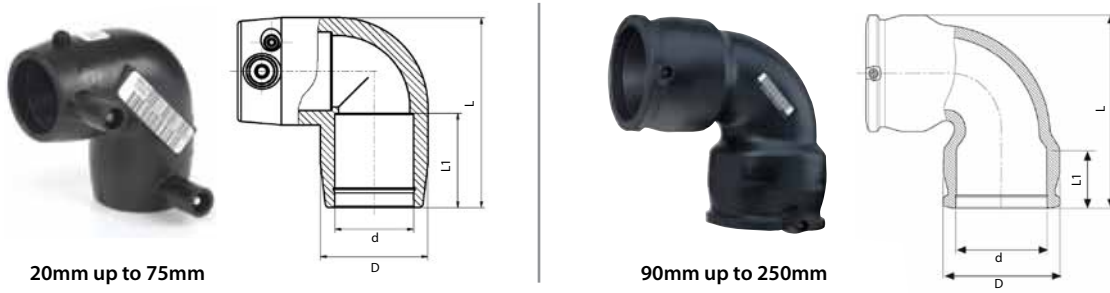
Code	£ ea	Size d	L	L1	D	A	A1	H	W	Box Qty
491504090	117.99	90	261	69	112	71	115	146	2260	5

### 490904 EF 180° Elbow



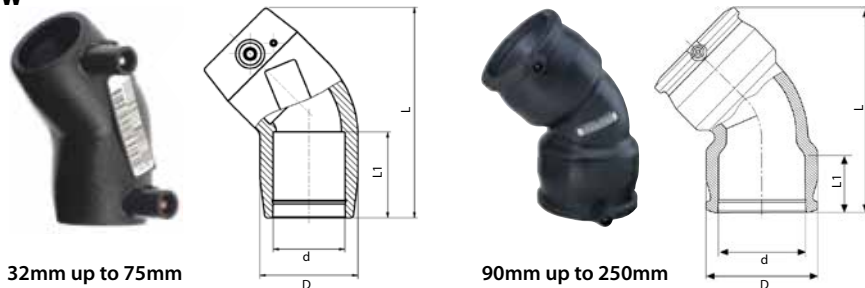
Code	£ ea	Size d	L	L1	D	A	W	Box Qty
490904025	38.20	25	38	38	38	32	163	216
490904032	46.06	32	44	41	44	41	216	144
490904040	57.30	40	53	48	53	48	323	80

### 490504 EF 90° Elbow



Code	£ ea	Size d	L	L1	D	A	W	Box Qty
490504020	15.82	20	66	35	36	38	65	320
490504025	15.82	25	66	37	36	38	53	320
490504032	15.82	32	83	40	44	43	85	192
490504040	22.60	40	92	44	55	47	138	120
490504050	31.03	50	108	48	68	52	211	72
490504063	33.06	63	131	57	81	59	320	40
490504075	44.82	75	158	69	97	62	527	33
490504090	47.19	90	213	78	113	69	875	19
490504110	71.96	110	243	79	143	79	1519	9
490504125	81.40	125	271	100	165	89	2424	7
490504140	105.10	140	309	93	183	94	3024	4
490504160	151.00	160	232	87	209	106	3990	3
490504180	185.21	180	412	105	244	115	7590	2
490504200	318.16	200	449	112	262	124	8670	1
490504225	380.02	225	498	121	295	140	12200	1
490504250	472.38	250	550	130	327	152	13500	1

### 490604 EF 45° Elbow



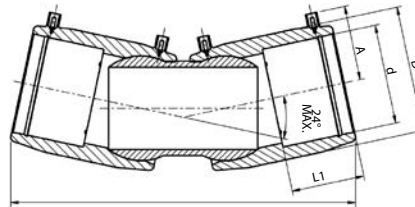
Code	£ ea	Size d	L	L1	D	A	W	Box Qty
490604032	15.08	32	95	39	45	43	85	240
490604040	21.41	40	108	42	55	46	117	160
490604050	24.74	50	125	49	68	51	181	96
490604063	33.01	63	148	57	81	59	264	60
490604075	44.73	75	180	71	96	62	426	40
490604090	49.37	90	243	75	112	69	759	22
490604110	72.99	110	271	81	143	78	1269	12
490604125	81.89	125	304	86	165	88	2030	8
490604140	105.10	140	342	92	182	95	2471	5
490604160	150.88	160	350	95	209	105	3990	4
490604180	186.00	180	434	105	244	114	6150	2
490604200	318.16	200	472	112	261	125	7050	1
490604225	380.02	225	520	120	294	140	9800	1
490604250	472.38	250	571	129	326	151	13400	1

### 490804 EF 22.5° Elbow



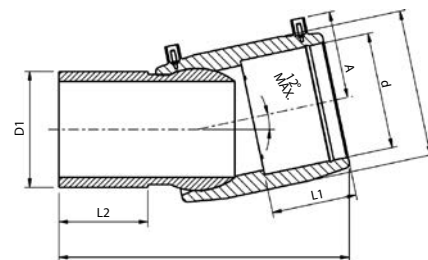
Code	£ ea	Size d	L	L1	D	A	W	Box Qty
490804090	42.47	90	214	72	113	71	665	26
490804110	53.94	110	232	71	143	81	1087	14
490804125	78.92	125	274	86	165	88	1850	8
490804160	139.44	160	302	86	209	106	2930	5
490804180	185.21	180	391	105	244	115	5360	2

### 4947C4 EF Adjustable Elbow



Code	£ ea	Size d	L	L1	D	A	W	Box Qty
4947C4090	138.60	90	341	72	116	77	1450	12
4947C4110	164.07	110	362	80	140	83	2030	8
4947C4125	203.14	125	382	85	157	95	2630	8
4947C4160	291.90	160	456	92	200	114	4510	3
4947C4180	372.88	180	511	104	224	128	7490	2
4947C4200	508.39	200	512	104	250	125	9733	2
4947C4225	644.32	225	600	105	282	141	13230	2
4947C4250	895.00	250	644	123	312	156	16775	1

### 4947D4 EF Adjustable Elbow One Sided



Code	£ ea	Size d x D1	L	L1	L2	D	A	W	Box Qty
4947D4090	122.50	90 x 90	258	72	82	116	77	940	20
4947D4110	135.19	110 x 110	276	85	85	140	83	1290	12
4947D4125	164.64	125 x 125	292	90	90	157	95	1740	12
4947D4160	243.77	160 x 160	335	100	100	200	114	3150	4
4947D4180	300.68	180 x 180	365	138	138	223	128	4210	3
4947D4200	403.71	200 x 200	370	104	116	250	125	6172	2
4947D4225	511.68	225 x 225	426	105	124	282	141	8340	2
4947D4250	710.73	250 x 250	455	123	134	312	156	10800	1

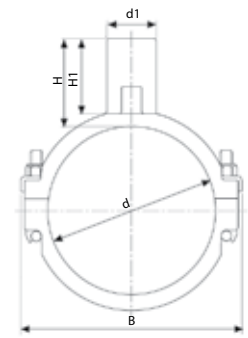
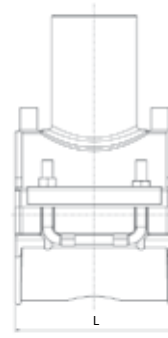
### 495804 EF Branch Saddle



63mm up to 180mm  
Outlets 32mm to 63mm

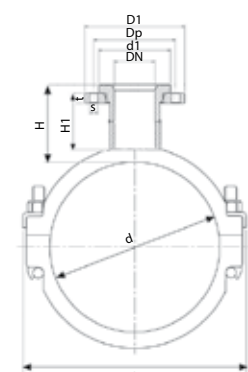
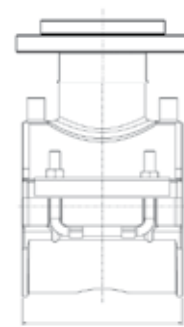


200mm up to 315mm and  
all sizes with Outlet 90mm



Code	£ ea	Size d x d1	B	H	H1	L	Max Cutting Dia	W	Box Qty
495804063032	58.61	63 x 32	100	59	49	118	23	394	56
495804063063	58.61	63 x 63	100	94	85	118	45	462	40
495804090032	58.61	90 x 32	126	59	49	118	23	519	32
495804090063	58.61	90 x 63	126	94	85	118	45	608	24
495804090090	85.32	90 x 90	139	105	90	176	66	934	15
495804110032	58.61	110 x 32	148	59	49	118	23	585	24
495804110050	58.61	110 x 50	148	93	82	118	37.5	629	20
495804110063	59.58	110 x 63	148	94	85	118	45	658	20
495804110090	85.32	110 x 90	162	105	90	176	68	948	18
495804125032	58.61	125 x 32	162	59	49	118	23	620	24
495804125050	58.61	125 x 50	162	93	82	118	37.5	690	20
495804125063	58.61	125 x 63	162	94	85	118	45	721	16
495804125090	85.32	125 x 90	169	105	90	176	68	953	18
495804140032	81.61	140 x 32	180	59	49	118	23	689	24
495804140050	81.61	140 x 50	180	93	82	118	37.5	721	16
495804140063	81.61	140 x 63	180	94	85	118	45	736	16
495804140090	106.10	140 x 90	174	105	90	176	68	965	16
495804160032	90.95	160 x 32	200	59	49	118	23	708	16
495804160050	90.95	160 x 50	200	93	82	118	37.5	787	16
495804160063	72.02	160 x 63	200	94	85	118	45	825	16
495804160090	179.75	160 x 90	176	105	90	176	68	956	16
495804180032	80.44	180 x 32	219	59	49	118	23	800	16
495804180050	81.29	180 x 50	219	93	82	118	37.5	828	12
495804180063	80.44	180 x 63	219	94	85	118	45	886	12
495804180090	179.75	180 x 90	182	105	90	176	68	976	15
495804200063	87.52	200 x 63	202	102	85	176	47	862	15
495804200090	200.38	200 x 90	202	105	90	176	68	900	15
495804225063	87.52	225 x 63	227	102	85	176	47	930	15
495804225090	200.38	225 x 90	227	105	90	176	68	983	15
495804250063	89.66	250 x 63	252	102	85	176	47	970	15
495804250090	200.38	250 x 90	252	105	90	176	68	990	15
495804280090	206.25	280 x 90	282	105	90	176	-	990	-
495804315090	267.55	315 x 90	317	105	90	176	-	990	-

### 4959 EF Flanged Branch Saddle



Code	£ ea	d x DN	L	B	H	H1	D1	Dp	d1	t	s	No.Holes	W	Box Qty
495904125080	285.94	125 x 80/3"	176	169	114	98	71	160	66.4	21	11.3	8	2340	8
495904180080	309.85	180 x 80/3"	176	178	114	103	71	160	71.5	21	11.3	8	1890	6

### 496304 EF Tapping Saddle



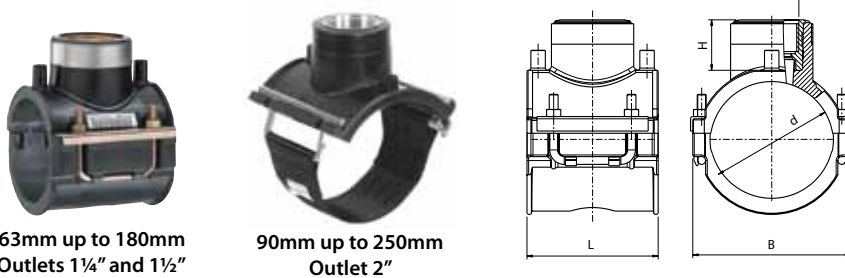
40mm up to 63mm      75mm up to 180mm      200mm up to 250mm

Code	£ ea	Size d x d1	H	B	H1	H2	L	Welding Cup	W	Box Qty
496304040032	53.09	40 x 32	121	66	11	94	100	Type C	370	52
496304050032	53.09	50 x 32	122	76	12	98	100	Type C	380	52
496304063032N	53.09	63 x 32	99	100	12	90	118	Type C	380	40
496304063063	84.40	63 x 63	175	100	64	177	118	Type A	1,183	16
496304090025	53.09	90 x 25	108	126	16	114	118	Type B	1,120	20
496304090032	53.09	90 x 32	126	126	16	114	118	Type B	1,120	20
496304090063	84.40	90 x 63	175	126	64	177	118	Type A	1,300	14
496304110032	53.09	110 x 32	127	148	16	114	118	Type B	970	20
496304110063	84.40	110 x 63	175	148	64	177	118	Type A	1,383	12
496304125032	53.09	125 x 32	131	162	16	114	118	Type B	1,230	15
496304125063	84.40	125 x 63	175	162	64	177	118	Type A	1,420	12
496304160032	53.09	160 x 32	144	199	16	138	118	Type A	1,320	10
496304160063	84.40	160 x 63	197	199	20	138	118	Type A	1,390	10
496304180032	73.11	180 x 32	144	219	18	138	118	Type A	1,565	10
496304180063	84.40	180 x 63	197	219	20	138	118	Type A	1,605	10
496304200032	133.13	200 x 32	132	202	56	177	176	Type A	1,445	8
496304200063	133.13	200 x 63	175	202	64	177	176	Type A	1,579	8
496304225032	133.13	225 x 32	132	227	56	177	176	Type A	1,450	8
496304225063	133.13	225 x 63	175	227	64	177	176	Type A	1,589	8
496304250032	133.13	250 x 32	132	252	56	177	176	Type A	1,464	8
496304250063	167.75	250 x 63	175	252	64	177	176	Type A	1,595	8

7991 Tapper Assembly Tool for use with 496304 see main catalogue.



### 493804 EF Transition Saddle



63mm up to 180mm  
Outlets 1¼" and 1½"

90mm up to 250mm  
Outlet 2"

Code	£ ea	Size d x G	B	H	L	W	Box Qty
493804063013	64.73	63 x 1 ¼"	100	53	118	612	48
493804075013	94.77	75 x 1 ¼"	117	53	118	656	40
493804090015	85.69	90 x 1 ½"	121	53	118	930	16
493804090020	103.07	90 x 2"	142	76	176	1436	14
493804110015	90.71	110 x 1 ½"	142	53	118	1000	12
493804110020	113.87	110 x 2"	158	76	176	1500	12
493804125015	118.99	125 x 1 ½"	158	53	118	1049	12
493804125020	121.62	125 x 2"	166	76	176	1510	12
493804160020	135.68	160 x 2"	176	76	176	1540	10
493804180020	117.88	180 x 2"	182	76	176	1500	10
493804200020	149.37	200 x 2"	202	76	176	1575	10
493804225020	166.57	225 x 2"	227	76	176	1570	10
493804250020	153.97	250 x 2"	252	76	176	1546	10

# Large Diameter Multi-size Saddles

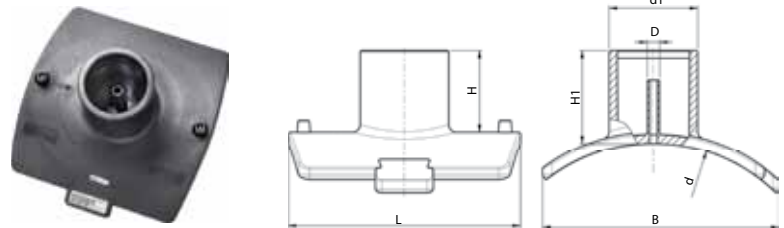
Plasson multi-size saddles have a large fusion zone which exceeds the requirements of the various international standards resulting in considerably greater robustness and reliability of the fusion joint.

Plasson saddles have:

- PN16 rating.
- Full bore outlet to SDR11 pipe.
- Flanged or spigot branches up to 250mm outlets.
- Spigot outlets above 250mm.
- Suitable for SDR11 to SDR26 pipes.
- Pressure test facilities built-in, no need to mount a valve first.
- Dedicated tooling to ensure success.

## 495804 EF Branch Saddle

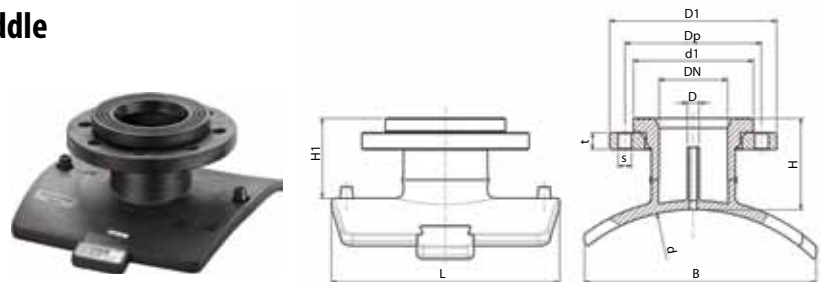
multi-size  
250 - 400mm  
450 - 800mm



Code	£ ea	Size d x d1	SDR up to	B	H	H1	L	W	Box Qty
495804400090T	359.10	250-400 x 90	17	305	102	115	300	1510	7
495804400110T	446.25	250-400 x 110	17	305	104	117	300	1650	7
495804400125T	540.75	250-400 x 125	17	305	125	110	300	1680	6
495804400160T	1,039.50	250-400 x 160	17	305	119	132	300	2167	6
495804710090T	390.60	450-800 x 90	26	315	105	117	300	1598	7
495804710110T	491.40	450-800 x 110	26	315	105	117	300	1601	7
495804710125T	598.50	450-800 x 125	26	315	109	117	300	1739	7
495804710160T	1,207.50	450-800 x 160	26	315	115	130	300	2017	6

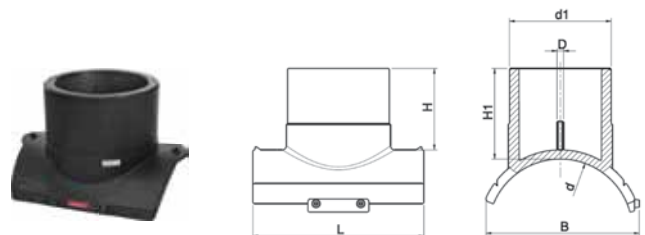
## 495904 EF Flanged Branch Saddle

multi-size  
250 - 400mm  
450 - 800mm



Code	£ ea	d x DN	SDR up to	L	B	H	H1	D	D1	Dp	d1	t	s	Holes	W	Box Qty
495904400080T	550.00	250-400 x 80	17	300	305	115	102	16	200	160	138	20	18	8	2930	5
495904400100T	658.00	250-400 x 100	17	300	305	121	109	16	220	180	158	22	18	8	3525	4
495904400150T	1,299.00	250-400 x 150	17	300	305	132	119	16	285	240	212	24	18	8	6330	4
495904710080T	580.00	450-800 x 80	26	300	315	117	105	16	200	160	138	20	18	8	2910	5
495904710100T	695.00	450-800 x 100	26	300	315	123	110	16	220	180	158	22	18	8	3530	4
495904710150T	1,475.00	450-800 x 150	26	300	315	132	121	16	285	24	212	24	18	8	6300	4

## 495803 EF XL & XXL Branch Saddle



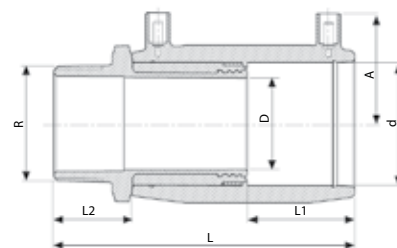
Code	£ ea	Size d x d1	SDR up to	B	L	H	H1	D	W	Box Qty
495803400250T	2,104.37	400 x 250	17	390	420	140	200	16	7,400	1
495803500315T	5,941.81	500 x 315	26	480	540	180	227	16	TBC	1
495803630250T	2,649.42	500-630 x 250	26	400	420	225	203	16	6,670	1
495803560400T	12,466.27	560 x 400	26	505	620	209	258	16	20100	1
495803630400T	12,985.67	630 x 400	26	520	620	209	258	16	20400	1

For correct installation it is imperative to use Plasson tooling for large saddles, see pg23, 24 and 25 for details.



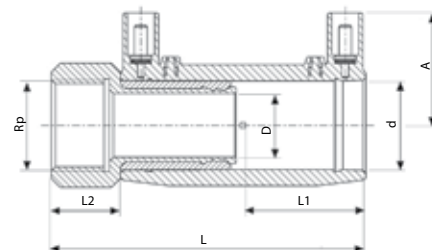


### 492104 EF Male Transition Coupler (BSPT thread)



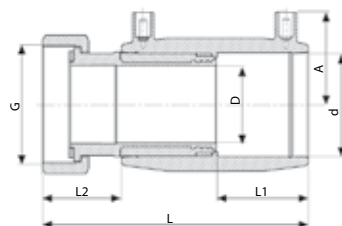
Code	£ ea	Size d x R	L	L1	L2	D	A	W	Box Qty
492104020005	30.78	20 x 1/2"	105	37	29	14	34	129	200
492104025007	31.74	25 x 3/4"	111	40	29	19	37	150	150
492104032005	31.74	32 x 1/2"	117	42	29	23	42	142	100
492104032007	31.74	32 x 3/4"	117	42	29	23	42	263	100
492104032010	31.74	32 x 1"	122	42	34	23	42	285	100
492104032013	40.09	32 x 1 1/4"	124	42	36	23	42	393	60
492104032015	43.01	32 x 1 1/2"	124	42	36	23	42	404	60
492104040010	38.27	40 x 1"	131	47	34	29	46	409	72
492104040013	38.27	40 x 1 1/4"	133	47	36	29	46	470	54
492104040015	40.54	40 x 1 1/2"	133	47	36	29	46	483	54
492104040020	55.01	40 x 2"	138	47	41	29	46	500	36
492104050010	43.43	50 x 1"	135	49	34	38	51	513	48
492104050013	44.54	50 x 1 1/4"	137	49	36	38	51	569	48
492104050015	45.84	50 x 1 1/2"	137	49	36	38	51	547	48
492104050020	57.25	50 x 2"	142	49	41	38	51	748	30
492104063013	66.55	63 x 1 1/4"	153	57	36	48	57	884	30
492104063015	61.41	63 x 1 1/2"	153	57	36	48	57	845	30
492104063020	63.21	63 x 2"	158	57	41	48	57	921	30
492104075020	91.23	75 x 2"	167	61	41	59	64	1305	16
492104075025	91.23	75 x 2 1/2"	172	61	46	59	64	1500	16

### 493104 EF Female Transition Coupler (BSPT thread)



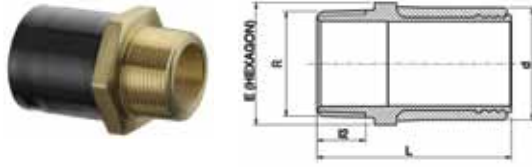
Code	£ ea	Size d x Rp	L	L1	L2	D	A	W	Box Qty
493104020005	28.34	20 x 1/2"	96	37	20	14	35	130	200
493104025007	32.95	25 x 3/4"	105	40	23	19	38	145	150
493104032007	37.02	32 x 3/4"	113	42	25	23	42	147	100
493104032010	37.55	32 x 1"	113	42	25	23	42	265	100
493104040010	45.73	40 x 1"	122	47	25	29	46	507	54
493104040013	45.73	40 x 1 1/4"	122	47	25	29	46	407	54
493104040015	48.42	40 x 1 1/2"	122	47	25	29	46	419	48
493104050015	55.65	50 x 1 1/2"	126	49	25	38	51	491	48
493104050020	64.31	50 x 2"	131	49	30	38	51	685	40
493104063015	64.04	63 x 1 1/2"	147	57	30	48	57	975	24
493104063020	70.05	63 x 2"	147	57	30	48	57	879	30

### 494104 EF Female Free Nut Coupler (BSPP thread)



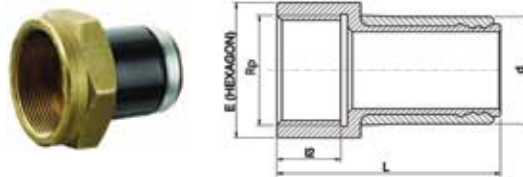
Code	£ ea	Size d x G	L	L1	L2	D	A	W	Box Qty
494104025007	40.37	25 x 3/4"	112	40	30	14	37	150	140
494104032010	47.49	32 x 1"	124	42	36	19	42	260	100
494104040013	57.23	40 x 1 1/4"	128	47	38	23	47	320	52
494104050010	65.78	50 x 1"	136	49	36	19	52	700	32
494104063020	83.67	63 x 2"	161	57	44	38	57	770	28

**492107 EF Weldable Transition  
Male Adaptor (BSPT thread)**



Code	£ ea	Size d x R	L	I2	E	W	Box Qty
492107020005	21.47	20 x 1/2"	64	17	27	0.087	250
492107025007	25.34	25 x 3/4"	67	17	32	0.112	250
492107032007	31.14	32 x 3/4"	72	17	40	0.209	100
492107032010	31.14	32 x 1"	76	20	40	0.209	100
492107040010	40.02	40 x 1"	81	20	50	0.310	90
492107040013	39.06	40 x 1 1/4"	83	22	50	0.352	60
492107040015	42.18	40 x 1 1/2"	83	22	55	0.379	60
492107050010	44.76	50 x 1"	86	20	55	0.365	60
492107050015	42.84	50 x 1 1/2"	88	22	55	0.404	60
492107050020	50.02	50 x 2"	93	26	70	0.600	40
492107063015	56.77	63 x 1 1/2"	97	22	70	0.624	32
492107063020	55.62	63 x 2"	102	26	70	0.687	32
492107075025	79.97	75 x 2 1/2"	111	29	85	0.694	16

**493107 EF Weldable Transition  
Female Adaptor (BSPT thread)**



Code	£ ea	Size d x Rp	L	I2	E	W	Box Qty
493107020005	37.16	20 x 1/2"	55	17	27	0.075	250
493107025007	42.15	25 x 3/4"	61	21	32	0.075	250
493107032007	49.09	32 x 3/4"	68	21	41	0.196	100
493107032010	54.91	32 x 1"	68	21	41	0.196	100
493107040013	48.83	40 x 1 1/4"	72	21	50	0.220	90
493107050015	77.82	50 x 1 1/2"	77	21	55	0.344	80
493107050020	77.82	50 x 2"	82	26	70	0.533	40
493107063015	56.22	63 x 1 1/2"	91	26	70	0.742	32
493107063020	82.10	63 x 2"	91	26	70	0.634	32

# Plasson Electrofusion Wastewater System

Plasson Wastewater Fittings (unless otherwise indicated) are for non pressurised systems, up to 0.5 bar. The PE 80 and PE 100 system is the result of many years experience and understanding of requirements in the field. Plasson Wastewater System is completely watertight - the proven Electrofusion technology not only provides a long-term seal, but also offers fully computerised control and monitoring during the laying of new piping or the renovation of existing networks.

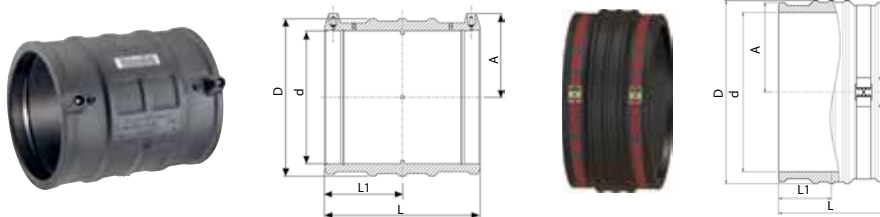
Polyethylene offers the ideal cost-effective and technically superior alternative to other materials, requiring minimal effort to install, reducing the number of connections required and increasing the system lifespan.

The Plasson System constitutes an excellent investment for both public wastewater infrastructures and private wastewater systems.

The Plasson wastewater system offers a strong, long-life and is resistant to axial loads through its special versatile products that can be completely fused after being laid.

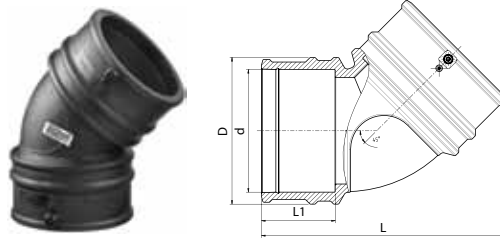


## 46010 EF LightFit Coupler PN10



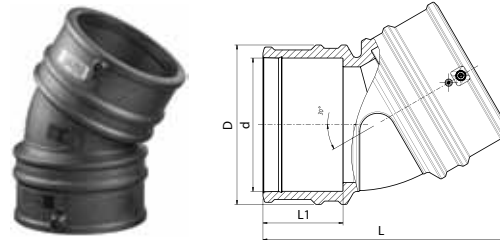
Code	£ ea	Size d	L	L1	D	A	W	Box Qty
460104110	24.49	110	163	80	131	79	540	25
460104125	30.58	125	173	85	149	87	740	20
460104140	32.92	140	182	89	167	94	970	12
460104160	35.95	160	198	97	193	104	1320	6
460104180	50.40	180	212	104	215	114	1650	5
460104200	65.12	200	232	114	235	127	2100	4
460104225	83.52	225	240	118	264	141	2825	4
460104250	116.08	250	256	126	293	155	3728	2
460104280	168.75	280	275	135	332	166	4850	1
460104315	191.96	315	284	140	374	184	6950	1
460104355	271.79	355	280	138	421	204	7980	1
460104400	374.79	400	296	146	474	227	11893	1
460103450	620.00	450	310	155	518	255	11700	1
460103500	1,160.00	500	340	170	576	283	16000	1
460103560	1,660.00	560	376	188	645	317	21500	1
460103630	2,400.00	630	148	209	726	356	30820	1
460103710	3,275.00	710	472	236	817	400	43100	1
460103800	4,100.00	800	500	250	913	450	57300	1

### 46060 LightFit Elbow 45°



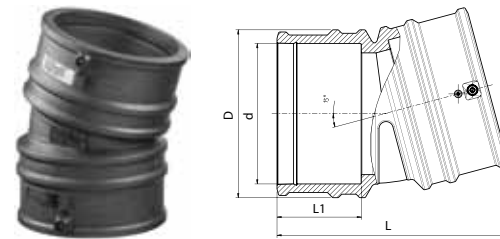
Code	£ ea	Size d	L	L1	D	A	W	Box Qty
460604160	127.57	160	323	98	193	106	1976	4

### 46330 LightFit Elbow 30°



Code	£ ea	Size d	L	L1	D	A	W	Box Qty
463304160	127.57	160	300	98	193	106	1798	4

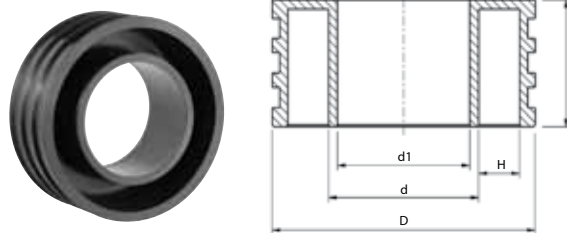
### 46370 LightFit Elbow 15°



Code	£ ea	Size d	L	L1	D	A	W	Box Qty
463704160	127.57	160	265	98	193	106	1728	4

### 477207 Wastewater Manhole Adaptor

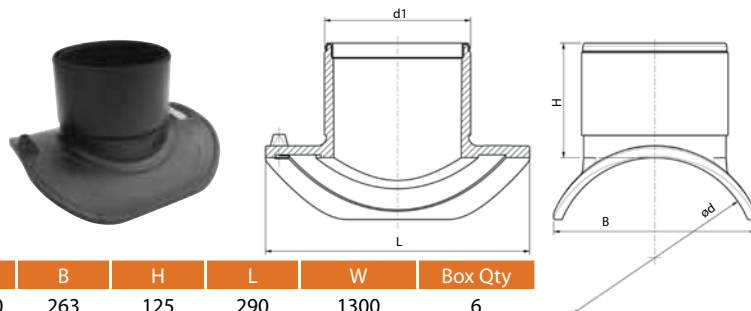
Requires special coupling to install.



Code	£ ea	Size d	L	d1	D	H	W	Box Qty
477207160	297.81	160	135	141	280	39	2524	6
477207225	334.54	225	135	198	355	44	3902	2
477207280	407.96	280	135	247	400	39	5027	2

### 4758S4 Wastewater Saddle Spigot Inlet

To be used with pipes SDR 11 to SDR 26.



Code	£ ea	Size d x d1	B	H	L	W	Box Qty
4758S4560160	236.71	355 - 560 x 160	263	125	290	1300	6

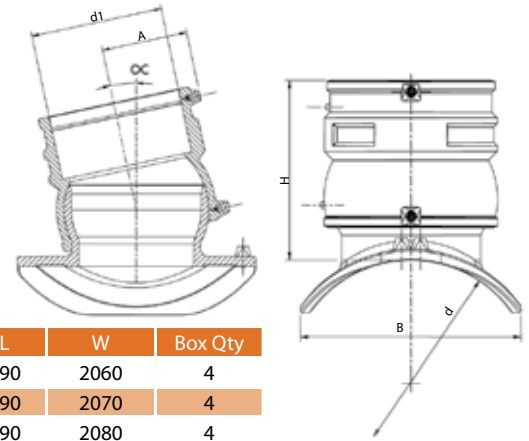
To be installed by using Plasson drilling and clamping tool 1280001.

### 475804 Wastewater Adjustable Saddle

For optimal flexibility, the Wastewater Electrofusion Saddle includes a connecting Coupler that can be adjusted to an angle of up to 12°.

The final position is permanently fixed only at the Electrofusion welding stage.

To be used with pipes SDR 11 to SDR 26.



Code	£ ea	Size d	B	H	A	L	W	Box Qty
475804250160	217.34	225 - 250 x 160	225	202	105	290	2060	4
475804315160	225.23	280 - 315 x 160	247	202	105	290	2070	4
475804560160	236.71	355 - 560 x 160	263	202	105	290	2080	4

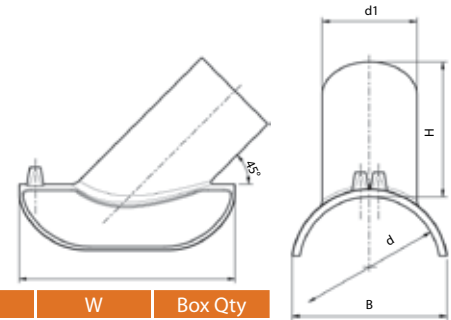
To be installed by using Plasson drilling and clamping tool 1280001

### 4758A4 Wastewater Saddle 45° - Inlet 110

The Plasson Wastewater Saddle 45° inlet - 110mm enables a 45° connection of the supply pipe.

Special tools are used to ensure a full bore hole and a permanent Electrofusion weld.

To be used with pipes SDR 11 to SDR 26.



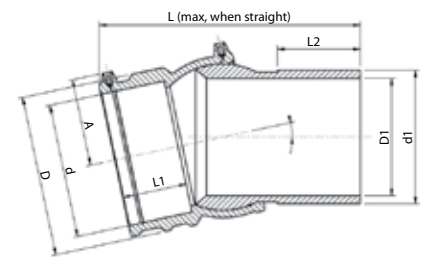
Code	£ ea	Size d x d1	L	B	H	W	Box Qty
4758A4160110	200.09	160 - 200 X 110	255	182	158	685	10
4758A4250110	212.02	225 - 315 X 110	255	221	158	710	10

To be installed by using Plasson cutting and clamping tool 1280002

### 4747D4 Wastewater Adjustable Elbow One Sided

The Wastewater Adjustable Elbow, offers additional flexibility during installation, allowing an adjustable angled connection of up to 12°. The supply pipe can therefore be precisely adjusted without stress to fit the site conditions. After positioning, the connection is permanently fixed at the Electrofusion welding stage.

To be used with pipes SDR 11 to SDR 26.



Code	£ ea	Size d	SDR	D	D1	L	L1	L2	A	W	Box Qty
4747D4160	215.99	160	17	193	141	298	78	98	105	3030	6

#### Abbreviations used on the product description pages of this catalogue:

A, A1	Height of shroud from centerline
d, d1	Nominal diameter of fitting or outlet
D, D1	Diameter
DN	Nominal bore corresponding approximately to the inside diameter of the pipe
Dp	Pitch circle diameter of bolt holes in flanges
G, R, Rp	Threaded outlet diameter
H	Height

L, L1, L2	Length
n	Number of bolt holes in flanges
S	Diameter of bolt holes in flanges
t	Thickness of metal flange
W	Wight in grams
UC	Units per carton

# Electrofusion Controllers

## The Smart Fuse System-Plasson Electrofusion

Plasson offers quality tools and control boxes ensuring easy installation and safe, dependable connections. All Plasson products combine to form the latest state-of-the art high performance pipe joining solution. Plasson fittings include an automatic recognition system which is part of the complete Smart Fuse System. The entire Electrofusion process is executed and fully monitored by the computerised control box. Plasson Electrofusion fittings can be used with Plasson's computerised Smart Fuse System control box or with standard barcode systems.

Each Plasson Electrofusion fitting comes complete with a barcode. Plasson provides superior products and unmatched service based on over 50 years in the field.

For our complete tooling range please ask your local Plasson representative.

### Plasson Control Box product family includes the following features:

- Automatic (Smart Fuse System) welding for Plasson Electrofusion couplings up to 900mm.
- Ergonomic design.
- Dynamic welding process supervision system.
- Active diagnostic analysis during welding.
- 4 x 20 alphanumeric character display with backlight and adjustable contrast.
- Easy end user oriented data input.
- Highly flexible welding cable.
- Reduced service expense by software controlled calibration.
- Easy data transfer to compatible PC printer or USB memory stick.

### Minimum required Generator Output power

Voltage- 110 V, frequency- 50Hz, 1 phase Synchronised, with Automatic Voltage Regulator.

Fitting Size	Output power Electronically controlled generator
20-75mm	2.0 KVA
90-160mm	3.2 KVA
180-500mm	5.0 KVA
Over 500mm	7.5 KVA

### 123 EF Control Box

Code	d	Bag	£ ea
1236	Digimatic Data Box 110V / 8-48V	1	1,465.00
1237	Polymatic Plus Box 110V / 8-48V	1	2,420.00

	Digimatic Data	Polymatic Plus
<b>Data Input</b>		
Barcode-System	-	x
SmartFuse/Fusamatic System	x	x
Manual	x	x
<b>Output Current</b>		
80A (max.: 110A)	-	x
60A (max.: 80A)	x	-
<b>Output Voltage</b>		
8-48V	x	x
40V	-	-
<b>Data Recording</b>		
AC/DC	AC/~	AC/~
Standard	x	x
Traceability	-	x
<b>Input Stage</b>		
Input Voltage	110V (90V – 150V)	
Input Frequency	50Hz (40Hz - 70Hz)	



## Tooling for Large Diameter Couplers & Multi-Size Saddles

### 126200 Large Diameter Saddle Clamp Kit

Complete kit including re-rounder, straps, ratchets, test tube cutter, clamping plates for outlets: 2" threaded transition/90/flange DN80, 110, 125/flange DN100, 160/flange DN150.



Code	£ ea	d
1262001	2,460.00	multi

### 126200 Split Clamping Plate Spare



Code	£ ea	d
1262002	490.16	80/90
1262003	490.16	100/110
1262004	490.16	150/160

### 126200 Split Clamping Plate

Split-able clamping plate for outlet 250/flange DN 250, including re-rounding shell & 400 flange DN 400, including adaptor for center strap.



Code	£ ea	d
1262005	POA	250/flange
1262006	POA	315/flange
1262007	POA	400/flange

### 127600 Tension Tools Set

Tension tools set for large branch saddles, outlets 180 to 400, including 3 straps, 3 ratchets, torque wrench.



Code	£ ea	d
1276001	POA	180 to 400

### 1274 Core Cutter

Core cutters set including: SDS max adaptor, SDS plus adaptor, adaptor for 13mm drill chuck.

Cutters for outlets: 90/flange DN80, 110, 125/flange DN100, 160/flange DN150.



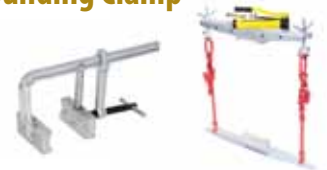
Code	£ ea	d
1274071	326.11	For use with 90mm off-take
1274087	326.11	For use with 110mm off-take
1274099	326.11	For use with 125mm off-take
1274127	348.00	For use with 160mm off-take
1274198	POA	For use with 250mm off-take
1274251	POA	For use with 315mm off-take
1274319	POA	For use with 400mm off-take

### 1259 Chain Scraper 250-800



Code	d	Bag	£ ea
1259	250-800	1	1,533.06

### 1269/70 Rounding Clamp



Code	d	Bag	£ ea
1269	250-400	1	804.07
1270	450-800 (hydraulic)	1	1,946.31

### 1268 Rotary Pipe Saw



Code	d	Bag	£ ea
1268001	250-500	1	3,950.00
1268002	500-1200	1	5,068.47

### 1244/72 Pipe Clamps



Code	d	Bag	£ ea
1244001	110-560 strap type	1	766.53
1272	250-800 with pulling shoe	1	2,429.95



## Tools for Wastewater Saddles

**12800 Drilling  
Clamping Tool**  
for Wastewater Branch  
Saddle 160mm



Code	£ ea
1280001	POA

**12800 Cutting &  
Clamping Tools**  
for 45° Wastewater  
Saddle 110mm



Code	£ ea
1280002	POA

## Standard Tooling

**1265 Electric Saddle Scraper**



Code	£ ea	d
1265	1,220.19	mains powered
1266	1,616.49	cordless

**1240/1 Rotational Scraper Tool**



Code	d	Bag	£ ea
1240	20-63	1	359.80
1241	25-110	1	385.87

**1242/0001 Rotational Scraper Tool**



Code	d	Bag	£ ea
1242	90-225	1	667.45
12420001	90-315	1	813.46

**1257 Pipe End Scraper**



Code	d	Bag	£ ea
1257	63-200	1	365.01
1257002	90-315	1	548.56
1257001	180-400	1	604.88

**1275 Re-rounding Rings**



Code	d	Bag	£ ea
1275000	63	1	71.51
1275008	75	1	81.94
1275001	90	1	84.92
1275002	110	1	92.37
1275003	125	1	98.33
1275004	160	1	113.23
1275005	180	1	123.66
1275006	200	1	131.11
1275007	225	1	156.43
1275009	250	1	265.19

**1243/4 Pipe Clamp**



Code	d	Bag	£ ea
1243	32-110	1	427.59
1244	110-225	1	1,006.39

**1258 Rotational Pipe Cutter**



Code	d	Bag	£ ea
1258	20-75	1	78.96
1258001	50-140	1	101.31
1258002	90-160	1	125.15

**49009991 Tension Belt**  
for Flex Restraint



Code	d	Bag	£ ea
49009991		1	164.33

# Technical Specifications for Plasson ElectroFusion Fittings

## Fitting Pressure Rating and Pipe Compatibility

Plasson Fittings weld to PE80, PE100, PE100-RC and PEX-A pipes. Check that the pipe SDR is compatible with the Plasson fittings. The range of compatible pipe SDR's for each specific fitting is defined on the fitting barcode label. For questions regarding pipe SDR compatibility refer to Plasson literature or contact your local Plasson representative.

The following is a general guideline for Plasson EF product pipe. SDR compatibility (in any case of discrepancy between the figure below and the figure on the barcode label, always refer to the barcode data).

## Material

All Plasson ElectroFusion fittings are produced from material class PE100 which conform to international standards for potable water and natural or suitable manufactured gas systems.

## Standards

Plasson ElectroFusion fittings are designed, tested and quality controlled according to Plasson's internal standards. These standards are based on the following international standards:

EN 1555  
 EN 12201  
 NF 136  
 AS/NZS 4129  
 WIS 4-32-14  
 WIS 4-32-15

## Plasson's ElectroFusion Fittings:

- PN 16 (Water)
- PE100 SDR11 (Gas)
- Up to 75mm (inclusive) are Weldable to Pipes SDR ≤ 11
- Elbows and Tees of main diameter 40mm-75mm ≤ 17
- 90mm & Up are Weldable to Pipes SDR ≤ 17
- 63-75mm Tapping Saddles and Valves are suitable for SDR11

Note: for tapping SDR ≤ 11 pipes (size 63 and up), please consult your Plasson representative.

## LightFit:

- PN 10 (Water)
- PE100 SDR17 (Gas)
- 40mm - 75mm are Weldable to Pipes SDR ≤ 17
- 90mm are Weldable to Pipes SDR ≤ 26
- 110mm - 800mm are Weldable to Pipes SDR ≤ 33

## Wastewater Saddle

- PN 0.5 (Water)
- 200mm & Up are Weldable to Pipes SDR ≤ 26

## Wastewater Adjustable Elbow

- PN 0.5 (Water)
- 160mm is Weldable to Pipes SDR ≤ 17

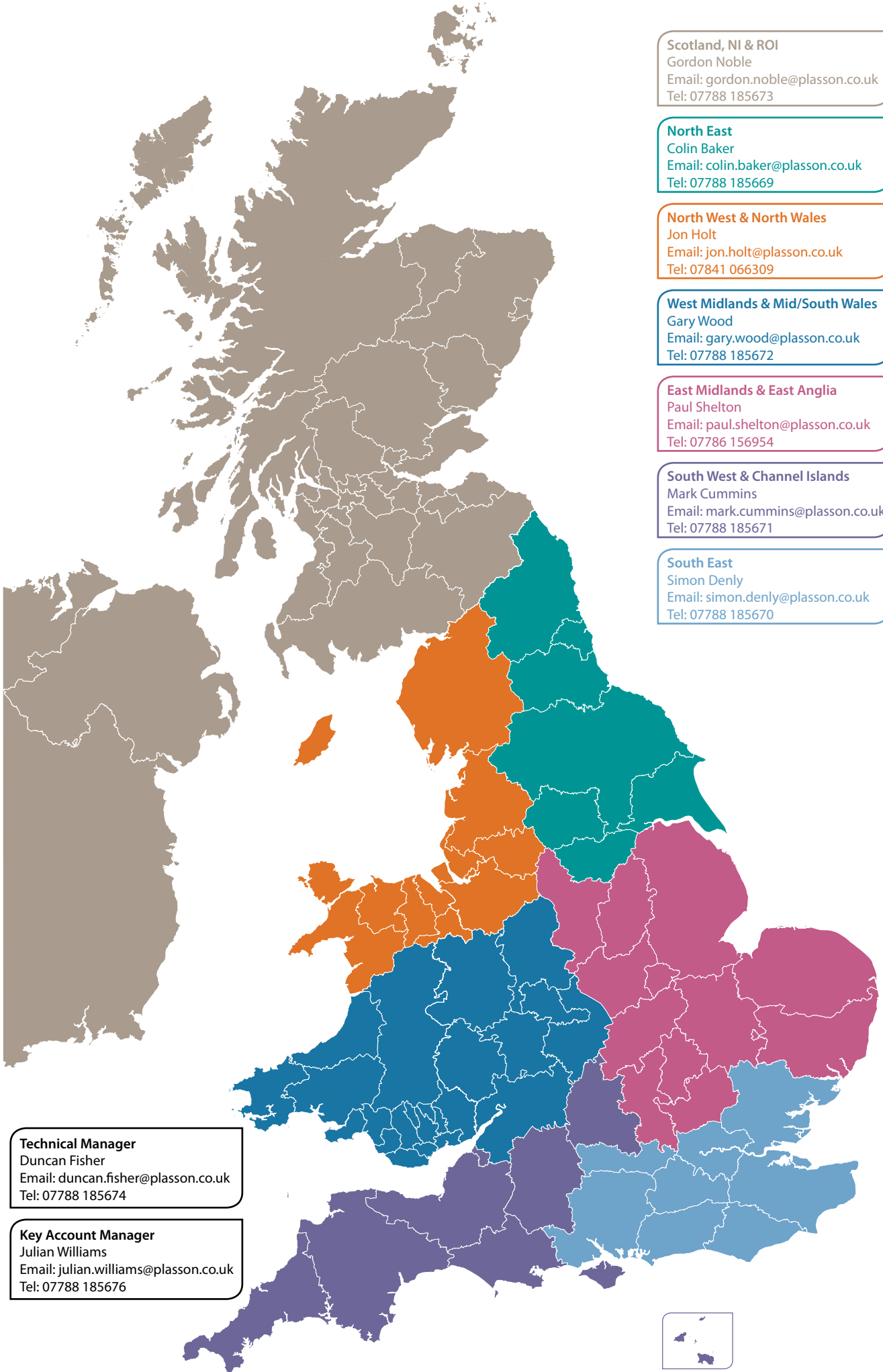
Measure the pipe external diameter toward the pipe end using a Pi tape. The pipe external diameter must be within the tolerances defined in International standards such as ISO 4437-2, AS/NZS, 4130, EN 1555-2 and EN 12201-2.

## Quality

Plasson has a quality assurance system in accordance with ISO 9001. Plasson manufactures to stringent quality and performance specifications drawn from many international standards and is proud to have our system regularly audited by customers who all confirm our production checks ensure consistently high quality for all products.

Whereas the products shown in this catalogue illustrate and describe the current state of their development, Plasson reserves the right at all times to make such technical alterations as it shall see fit to its products. Although every care has been taken in the preparation of the information, specifications and other data included in this catalogue, we cannot rule out inadvertent errors or omissions. Purchasers should take into account possible deviations or variations which will not substantially diminish the functionality or performance of the products, and, in many cases, are designed to improve the same.

Plasson® is the Registered Trademark of Plasson Ltd. or Plasson Maagan Michael Industries Ltd. Plasson's products are protected by patents, trademark, design and copyright laws.



**Scotland, NI & ROI**  
Gordon Noble  
Email: gordon.noble@plasson.co.uk  
Tel: 07788 185673

**North East**  
Colin Baker  
Email: colin.baker@plasson.co.uk  
Tel: 07788 185669

**North West & North Wales**  
Jon Holt  
Email: jon.holt@plasson.co.uk  
Tel: 07841 066309

**West Midlands & Mid/South Wales**  
Gary Wood  
Email: gary.wood@plasson.co.uk  
Tel: 07788 185672

**East Midlands & East Anglia**  
Paul Shelton  
Email: paul.shelton@plasson.co.uk  
Tel: 07786 156954

**South West & Channel Islands**  
Mark Cummins  
Email: mark.cummins@plasson.co.uk  
Tel: 07788 185671

**South East**  
Simon Denly  
Email: simon.denly@plasson.co.uk  
Tel: 07788 185670

**Technical Manager**  
Duncan Fisher  
Email: duncan.fisher@plasson.co.uk  
Tel: 07788 185674

**Key Account Manager**  
Julian Williams  
Email: julian.williams@plasson.co.uk  
Tel: 07788 185676





**Tel: 01444 244446**  
**Fax: 01444 258683**  
**Email: [sales@plasson.co.uk](mailto:sales@plasson.co.uk)**

[www.plasson.co.uk](http://www.plasson.co.uk)