

# PVC-U Solvent welded metric fittings

## PVC-U Raccordi per incollaggio metrici

### REDUCING BUSH

#### RIDUZIONE CORTA

Rev. Mar 2021

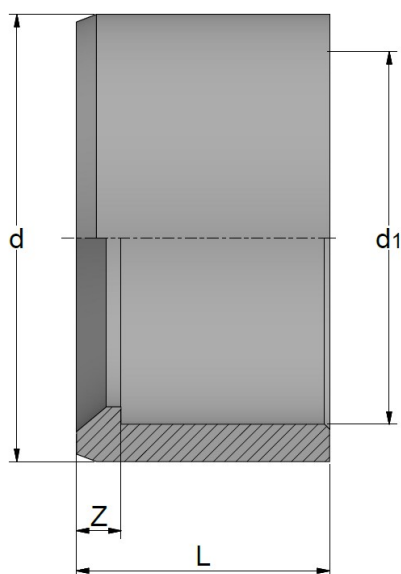


Fig. A

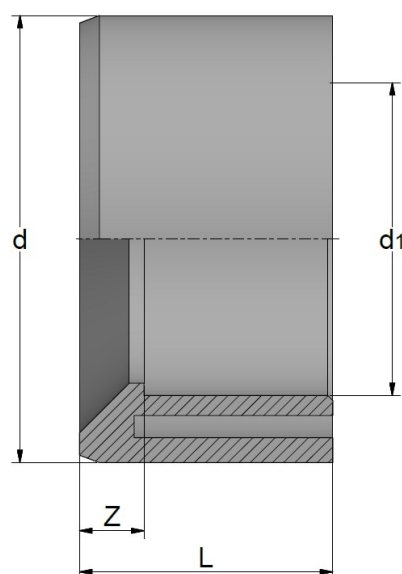


Fig. B

Code	Fig.	d	d1	L	Z	PN	Weight (g)
RDRRCD020A	A	20	16	16	2	16	3
RDRRCD025A	B	25	16	19	5	16	10
RDRRCD025B	A	25	20	19	3	16	6
RDRRCD032A	B	32	16	22	8	16	15
RDRRCD032B	A	32	20	22	6	16	15
RDRRCD032C	A	32	25	22	3	16	10
RDRRCD040B	B	40	20	26	10	16	29
RDRRCD040C	B	40	25	27	8	16	30
RDRRCD040D	A	40	32	26	4	16	16
RDRRCD050B	B	50	20	31	15	16	51
RDRRCD050C	B	50	25	31	12	16	45
RDRRCD050D	B	50	32	31	9	16	40
RDRRCD050E	A	50	40	31	5	16	30
RDRRCD063D	B	63	32	38	16	16	83
RDRRCD063E	B	63	40	37	11	16	78
RDRRCD063F	A	63	50	38	6	16	62
RDRRCD075E	B	75	40	44	18	16	125
RDRRCD075F	B	75	50	44	13	16	122
RDRRCD075G	A	75	63	44	6	16	80
RDRRCD090F	B	90	50	51	20	16	210
RDRRCD090G	B	90	63	51	13	16	195
RDRRCD090H	A	90	75	53	9	16	140
RDRRCD110G	B	110	63	61	23	16	372
RDRRCD110H	B	110	75	61	17	16	370

Code	Fig.	d	d1	L	Z	PN	Weight (g)	
RDRRCD110I	A	110	90	61	10	16	275	3
RDRRCD125H	B	125	75	69	25	16	440	
RDRRCD125I	B	125	90	69	18	16	373	3
RDRRCD125L	A	125	110	69	7	16	260	3
RDRRCD140I	B	140	90	76	25	16	600	
RDRRCD140L	B	140	110	76	15	16	480	
RDRRCD140M	A	140	125	76	7	16	320	3
RDRRCD160I	B	160	90	86	30	16	850	
RDRRCD160L	B	160	110	86	26	16	725	3
RDRRCD160M	B	160	125	86	17	16	745	
RDRRCD160N	A	160	140	86	10	16	710	3
RDRRCD200O	B	200	160	116	30	10	1370	
RDRRCD200P	A	200	180	106	10	10	895	
RDRRCD225O	B	225	160	119	33	10	1840	
RDRRCD225Q	A	225	200	119	13	10	1360	
RDRRCD250O	B	250	160	132	45	10	3100	
RDRRCD250Q	B	250	200	106	26	10	2150	
RDRRCD250R	A	250	225	132	12	12	1734	
RDRRCD280R	B	280	225	147	27	10	4300	
RDRRCD280S	A	280	250	147	15	15	2640	
RDRRCD315Q	B	315	200	106	57	10	8650	
RDRRCD315R	B	315	225	165	45	10	8100	
RDRRCD315S	B	315	250	165	33	10	5080	
RDRRCD315T	A	315	280	163	17	10	3600	
RDRRCD355U	A	355	315	184	21	5	5500	
RDRRCD400U	B	400	315	205	42	5	10200	
RDRRCD400V	A	400	355	206	21	5	7500	

Marks / Marchi:

1. NF
2. KIWA UNI, KIWA, DVGW, NF
3. KIWA UNI
4. KIWA UNI, KIWA



NSF and WRAS certifications: only for valves with EPDM seals. Certifications and approvals are related to items declared on Official Listing or certificates. /  
 Certificazioni NSF e WRAS: valide solo per le valvole con guarnizioni EPDM. Le certificazioni si riferiscono ai prodotti dichiarati nelle Official Listing o sui certificati stessi.