



CalderSafe.
**Data Acquisition for
Electrofusion Welding.**



Caldertech
making the right connections

CalderSafe[®]
Data Acquisition for Electrofusion Welding

Box Pairing

Smartphone control of welding unit.



Box Pairing

The welding unit connects to the smartphone using Bluetooth.

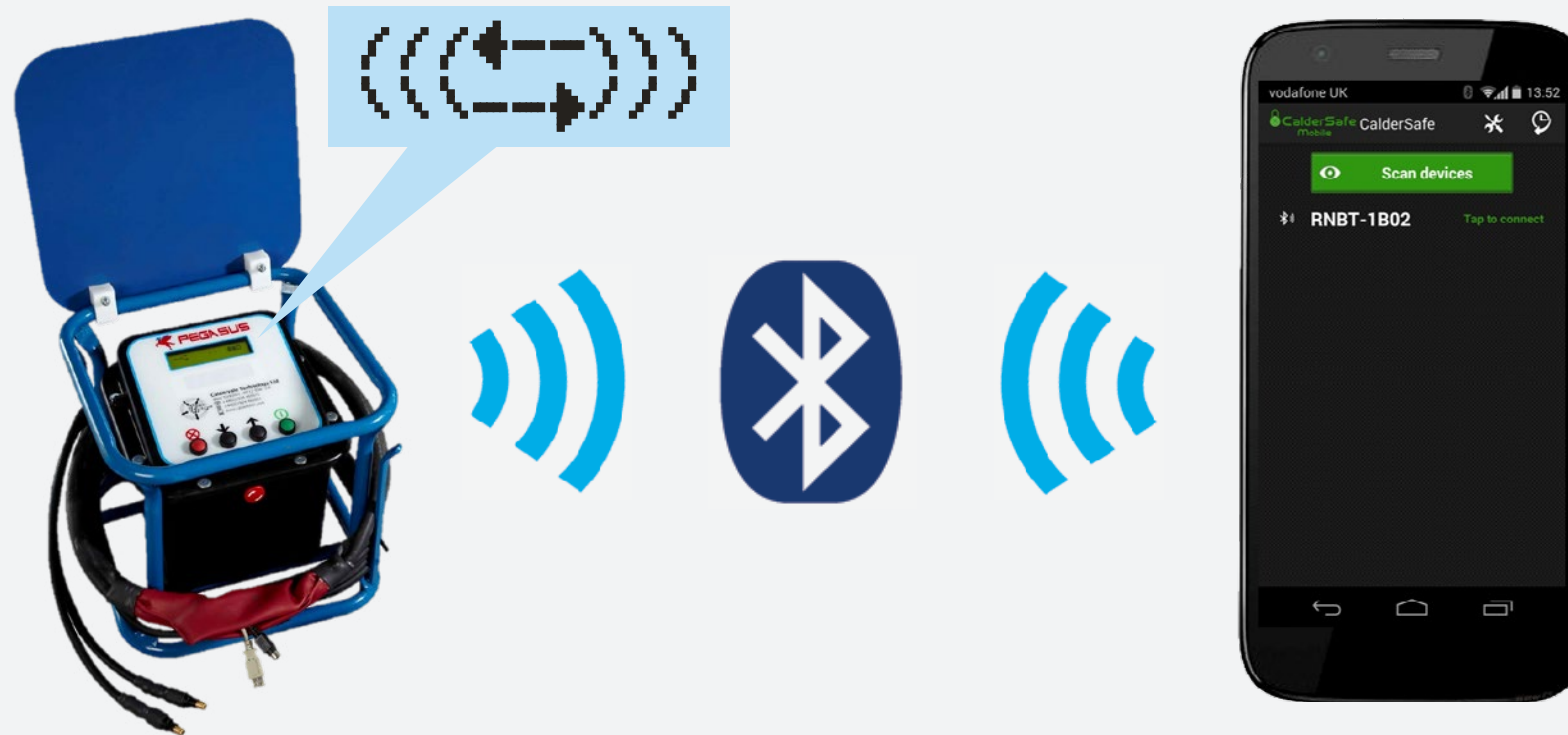


Photo Evidence

Images can be taken to show that the fitting has been set up and clamped correctly.

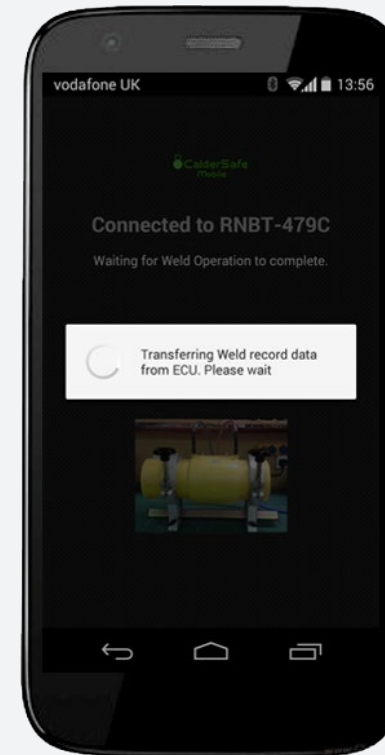


Data Transmission

Welding data is uploaded after each weld is completed.

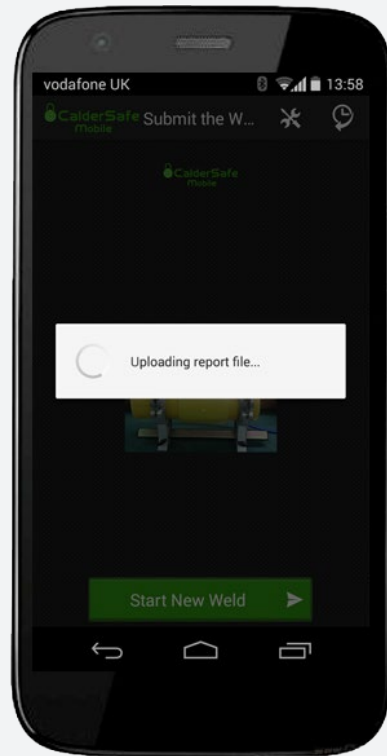


Data file is transferred
to the phone



Data Transmission

The data is then automatically uploaded.



File uploaded via our web server

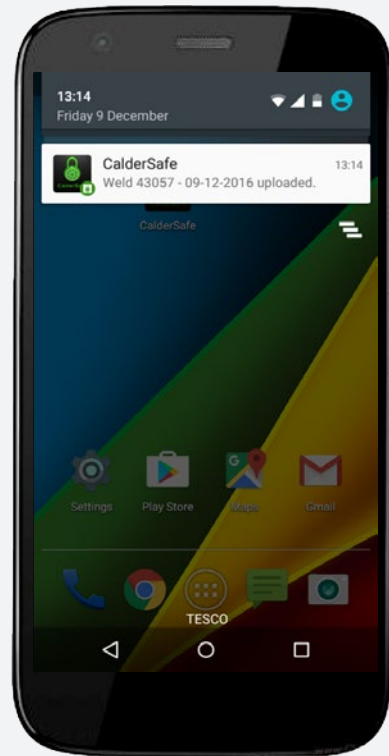


074-1234-1612080945.zip



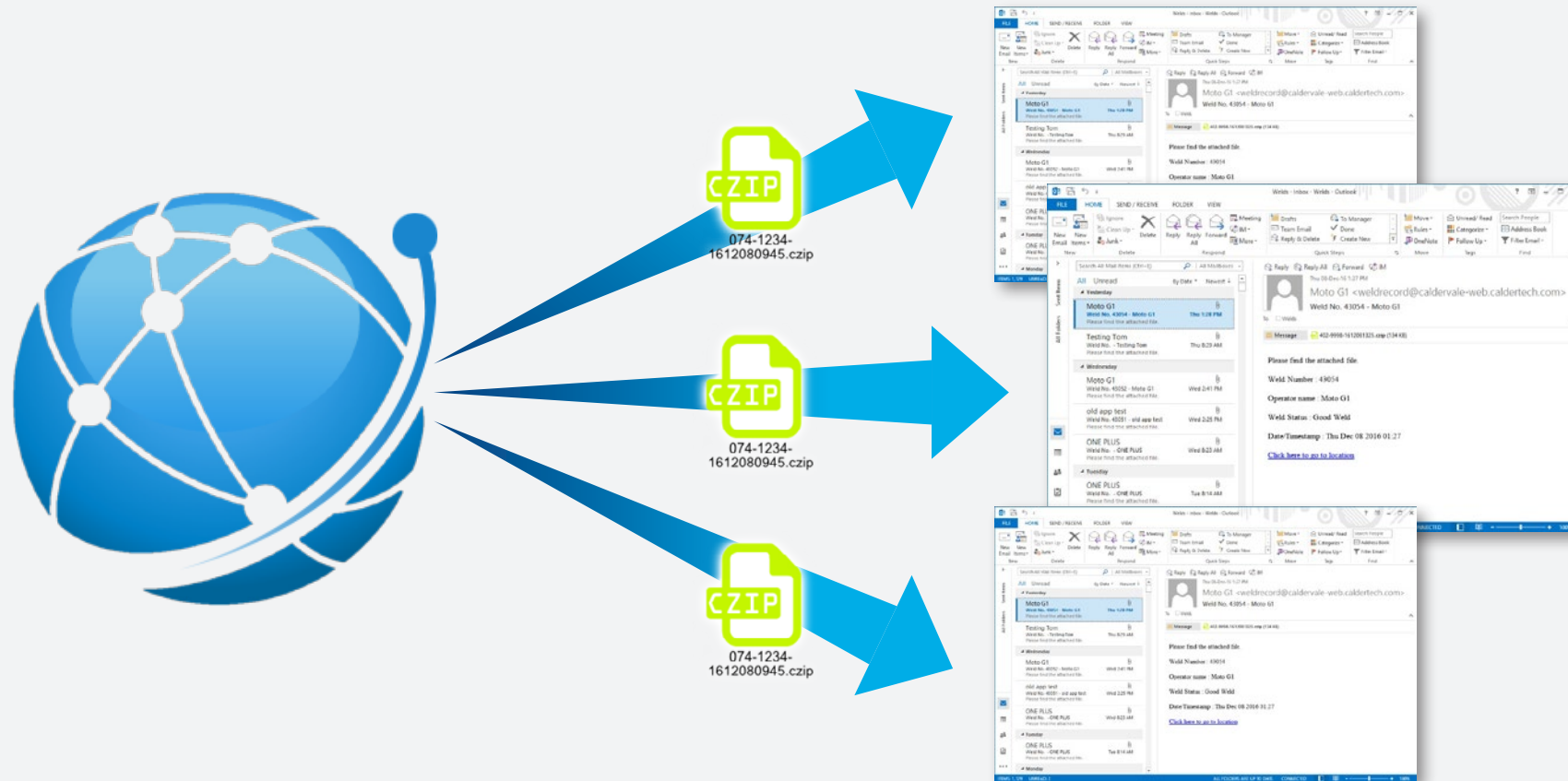
Data Transmission

If there is no mobile signal, files will upload when signal returns.



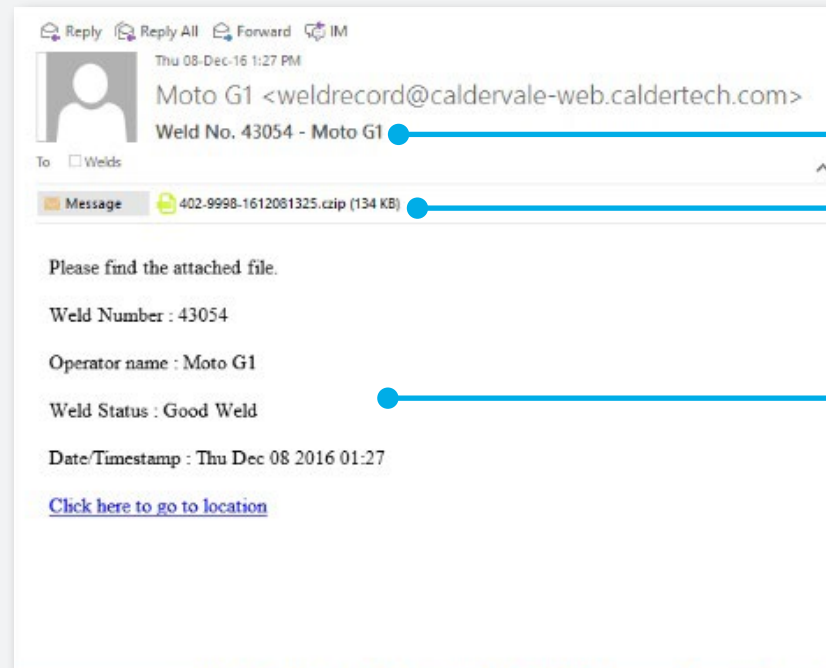
Emailing Data

Data will be sent to your pre-configured email addresses.



Emailing Data

The email contains a summary and the attached CZIP file.



Weld number and operator

Attached data file

Summary of the weld

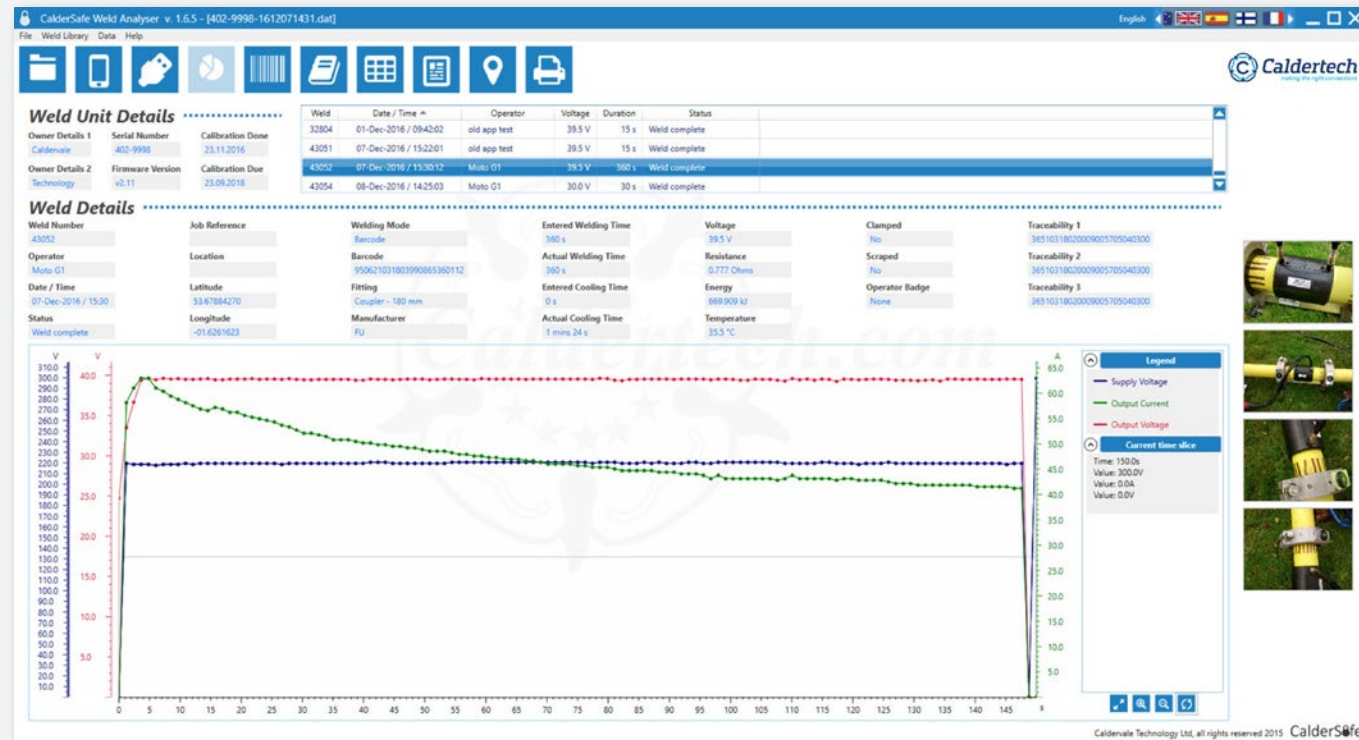
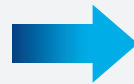
Weld Analyser

Data files are opened with the CalderSafe Weld Analyser.



074-1234-1612080945.czip

Double click attachment to open data



Obtain the CalderSafe® Weld Analyser only from Caldervale Technology

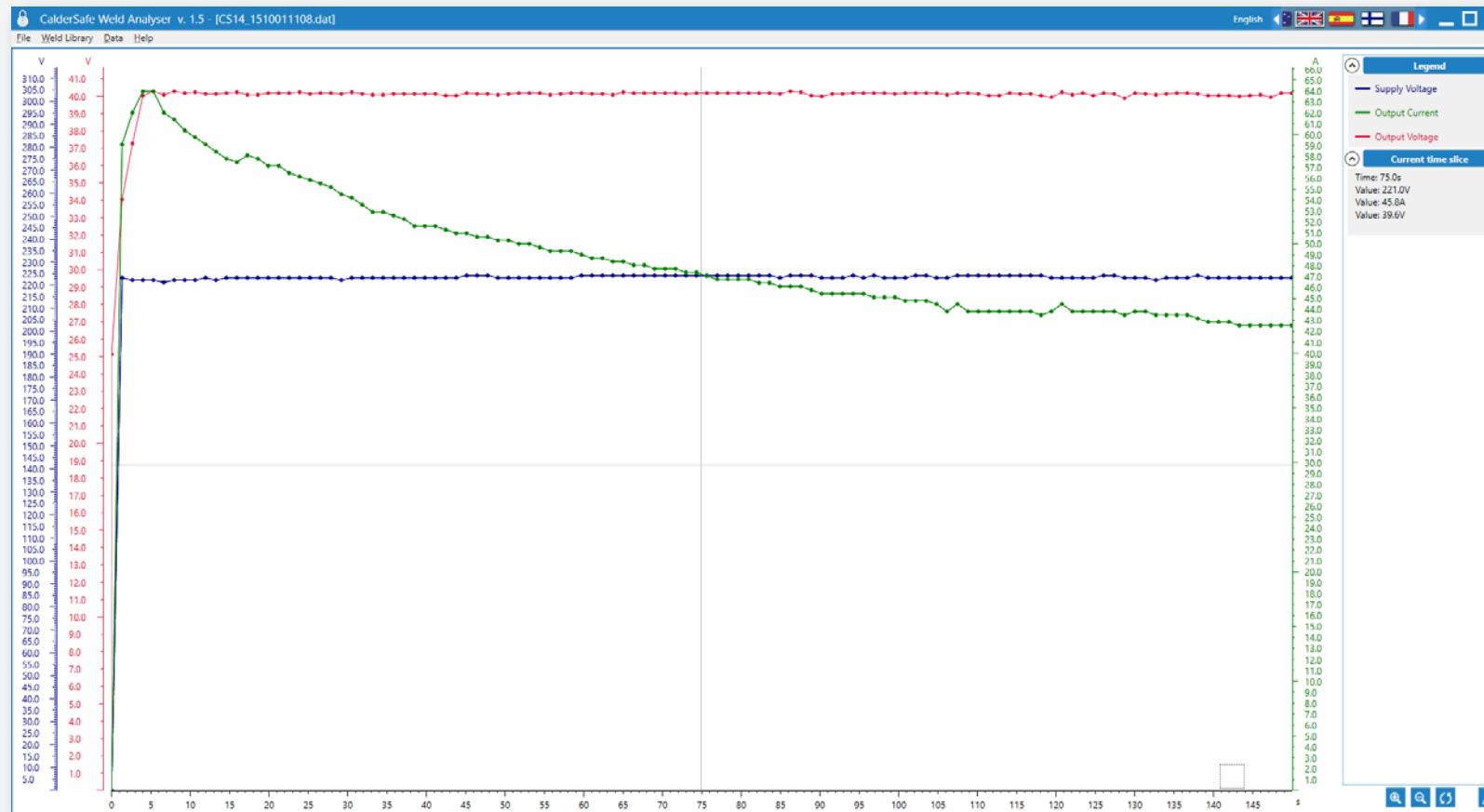
Weld Analyser

Graph with 124 point data plot of Supply Voltage, Output Voltage and Output Current.



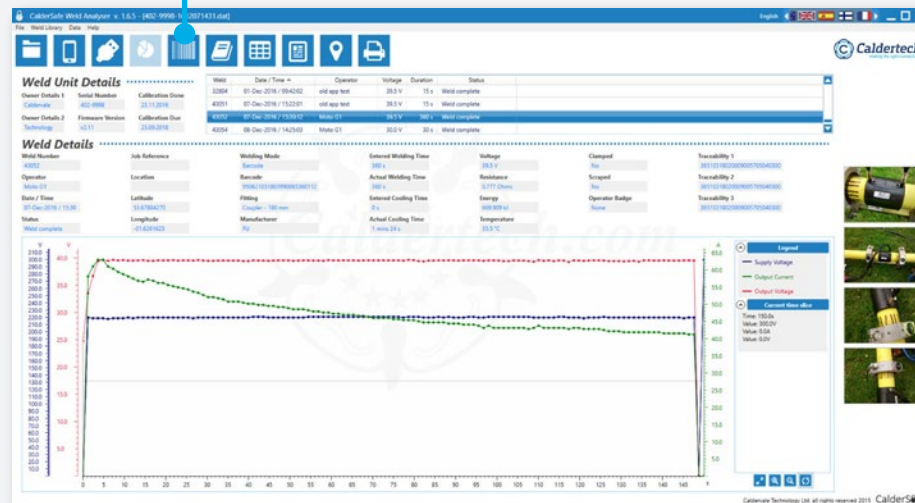
Weld Analyser

Graph can be shown in full screen mode.



Weld Analyser

For barcode welds, the barcode can be recreated and printed out.



Weld Analyser

Data files are backed up onto the PC and organised into folders.

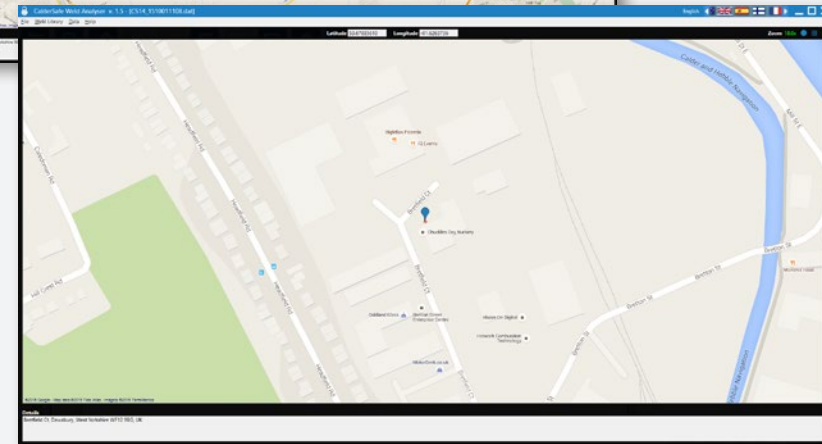
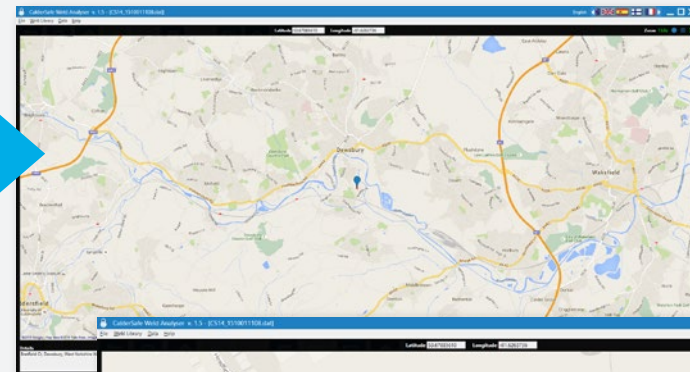
The screenshot shows the CalderSafe Weld Analyser software interface. At the top, there is a 'Weld Unit Details' table with columns for Unit, Date/Time, Operator, Voltage, Duration, and Status. Below this is a 'Weld Details' section with various parameters like Job Reference, Welding Mode, and Actual Welding Time. A large graph at the bottom displays welding parameters over time, with a legend for Supply Voltage, Output Current, and Output Voltage.

Unit	Date/Time	Operator	Voltage	Duration	Status
3204	01 Oct 2016 19:04:02	oil ops test	28.5 V	15 s	Weld complete
4203	01 Oct 2016 13:52:05	oil ops test	28.5 V	15 s	Weld complete
4002	02 Oct 2016 12:50:07	Weld 1	26.5 V	30 s	Weld complete
4004	08 Oct 2016 14:25:02	Weld 01	22.0 V	20 s	Weld complete

The graph shows Supply Voltage (red dashed line) at approximately 28.5V, Output Current (green solid line) starting at 150A and decreasing to 100A, and Output Voltage (blue solid line) at approximately 15V. The x-axis represents time from 0 to 140 seconds.

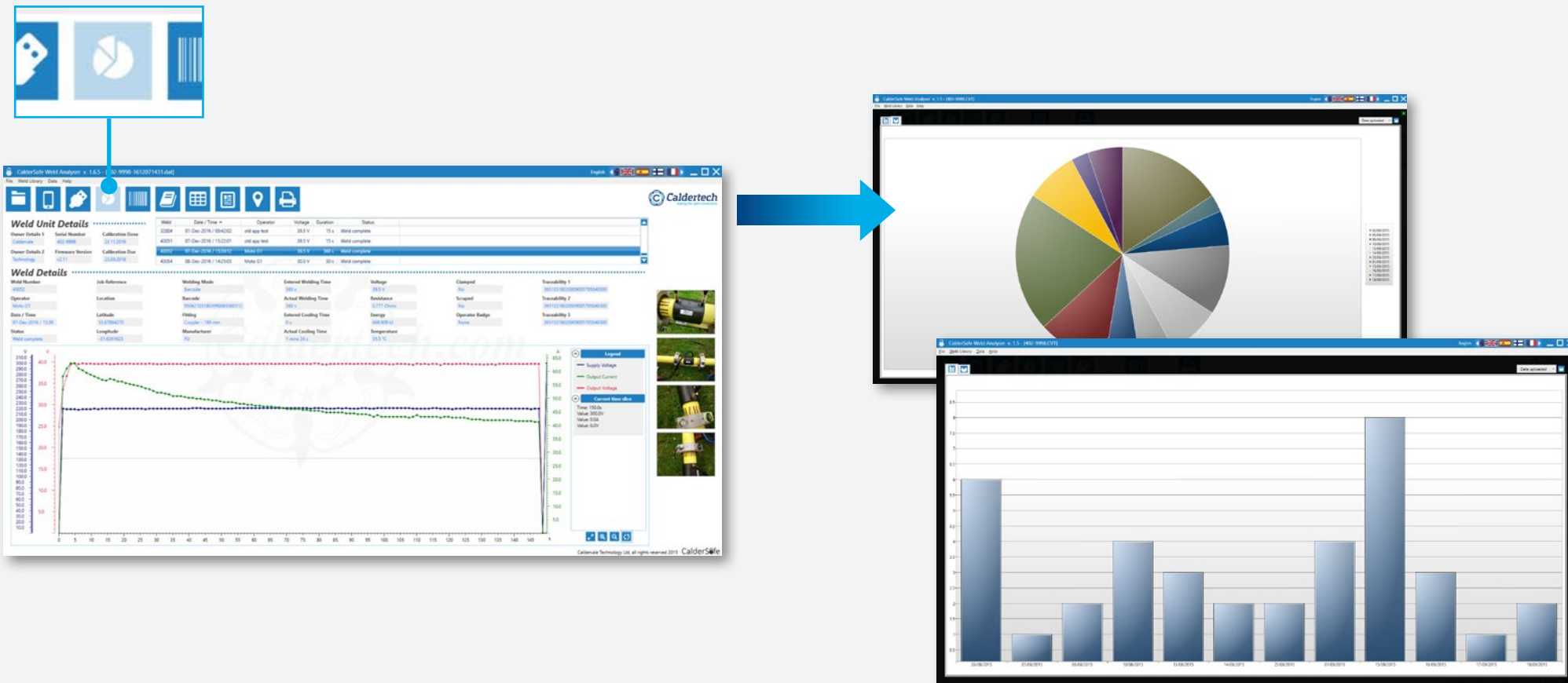
Weld Analyser

Google Maps are integrated to give visual reference of location.



Weld Analyser

Mass data can be analysed through pie charts and bar charts.



Get the App

Find the CalderSafe Android app on the Google Play Store®





Contact Us

For more information contact:
info@caldertech.com

