



CalderSafe. Data Acquisition for Electrofusion Welding.



CalderSafe[®]
Data Acquisition for Electrofusion Welding

Box Pairing

Smartphone control of welding unit.



Box Pairing

The welding unit connects to the smartphone using Bluetooth.

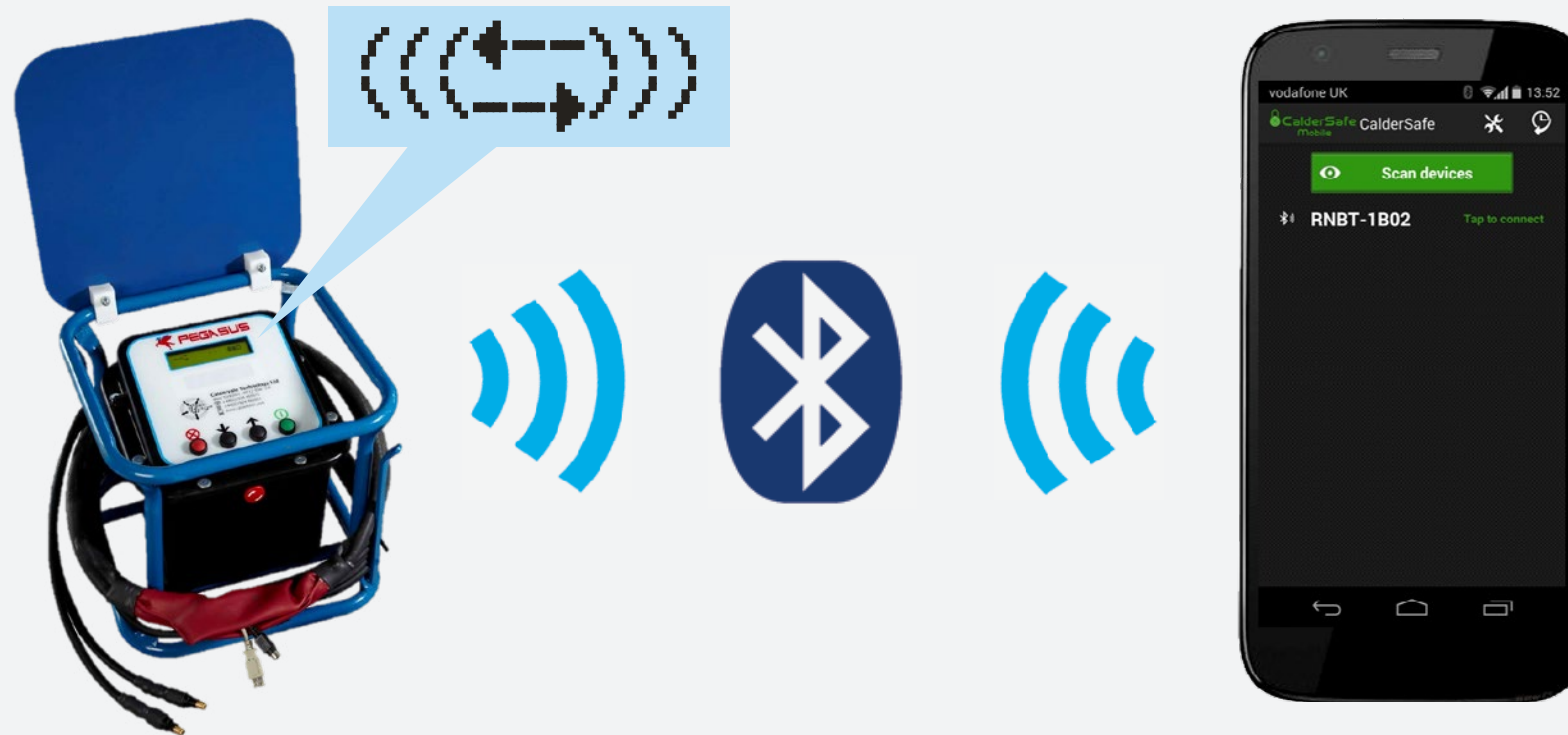


Photo Evidence

Images can be taken to show that the fitting has been set up and clamped correctly.

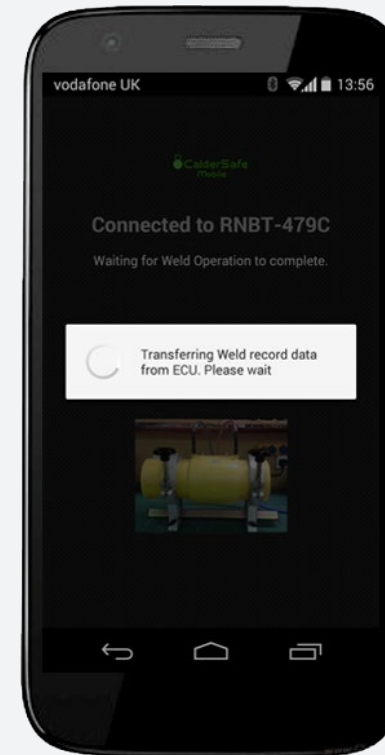


Data Transmission

Welding data is uploaded after each weld is completed.

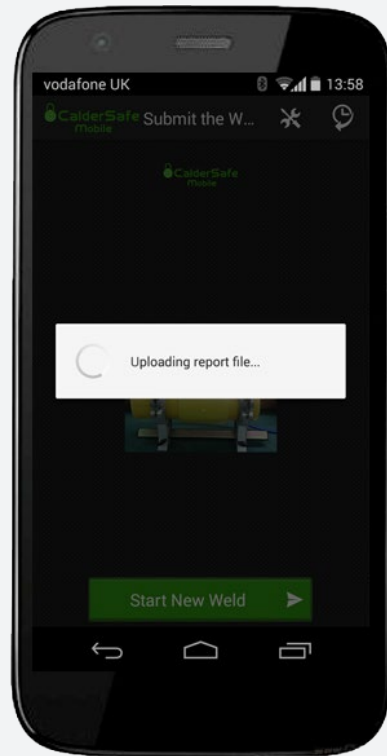


Data file is transferred to the phone



Data Transmission

The data is then automatically uploaded.



File uploaded via our web server

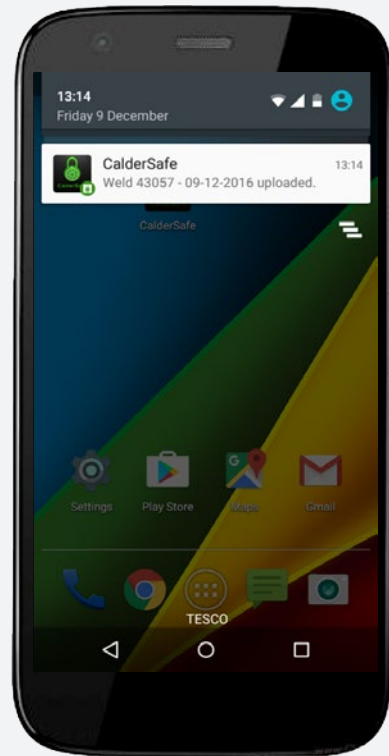


074-1234-1612080945.zip



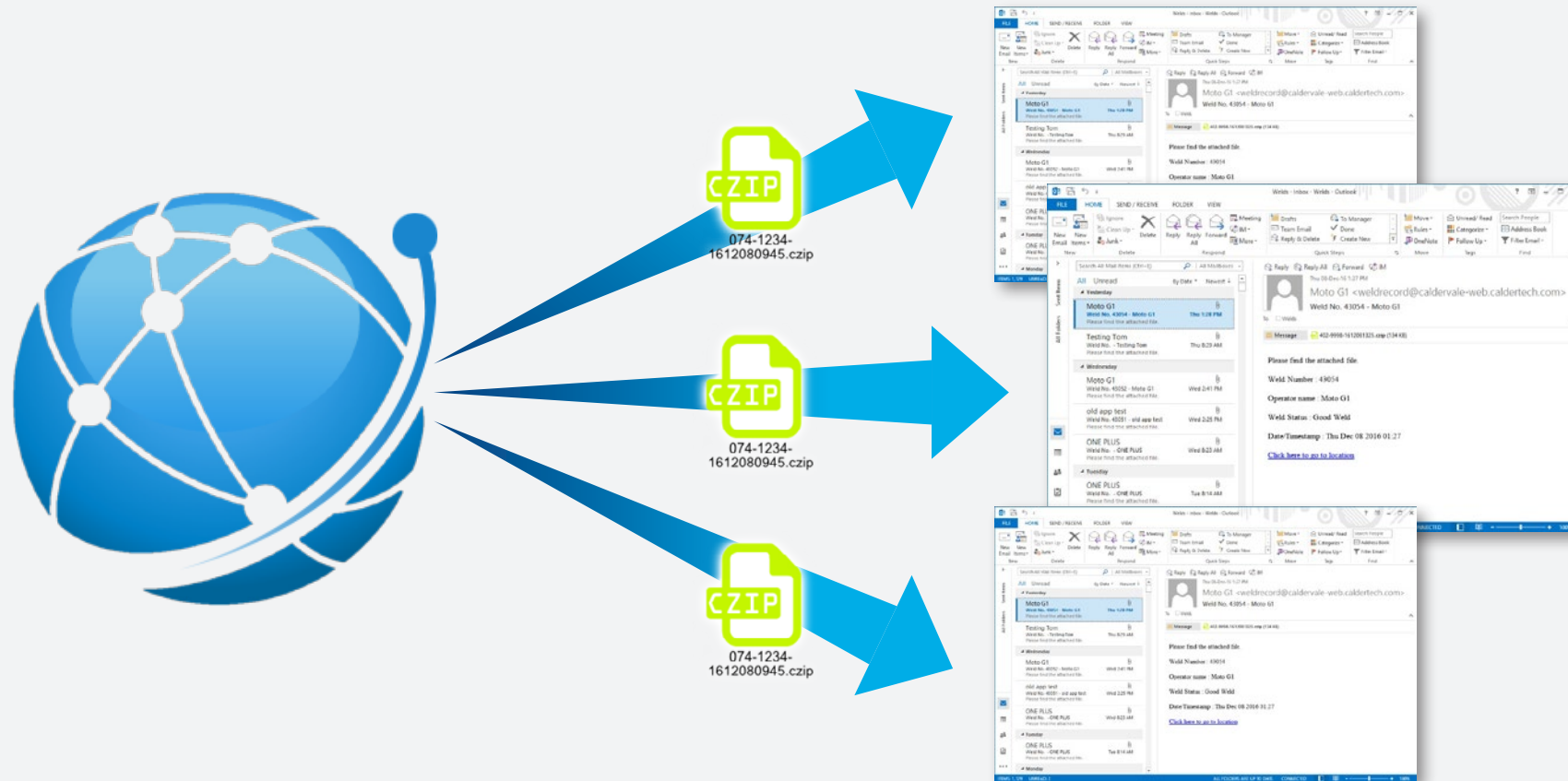
Data Transmission

If there is no mobile signal, files will upload when signal returns.



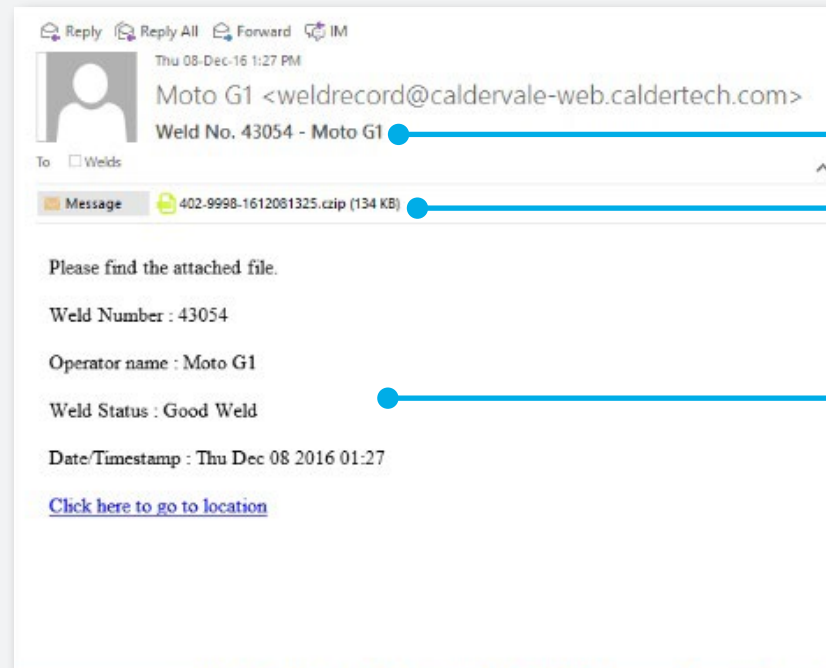
Emailing Data

Data will be sent to your pre-configured email addresses.



Emailing Data

The email contains a summary and the attached CZIP file.



Weld number and operator

Attached data file

Summary of the weld

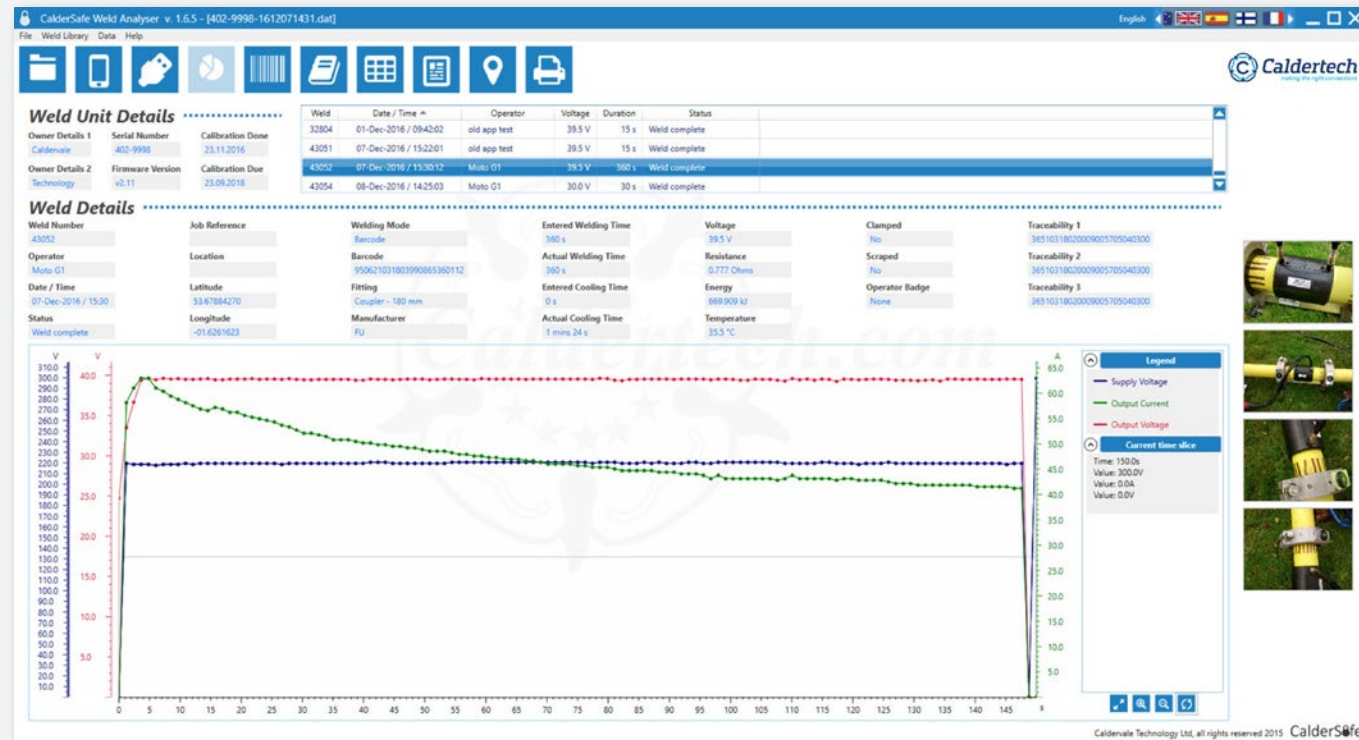
Weld Analyser

Data files are opened with the CalderSafe Weld Analyser.



074-1234-1612080945.czip

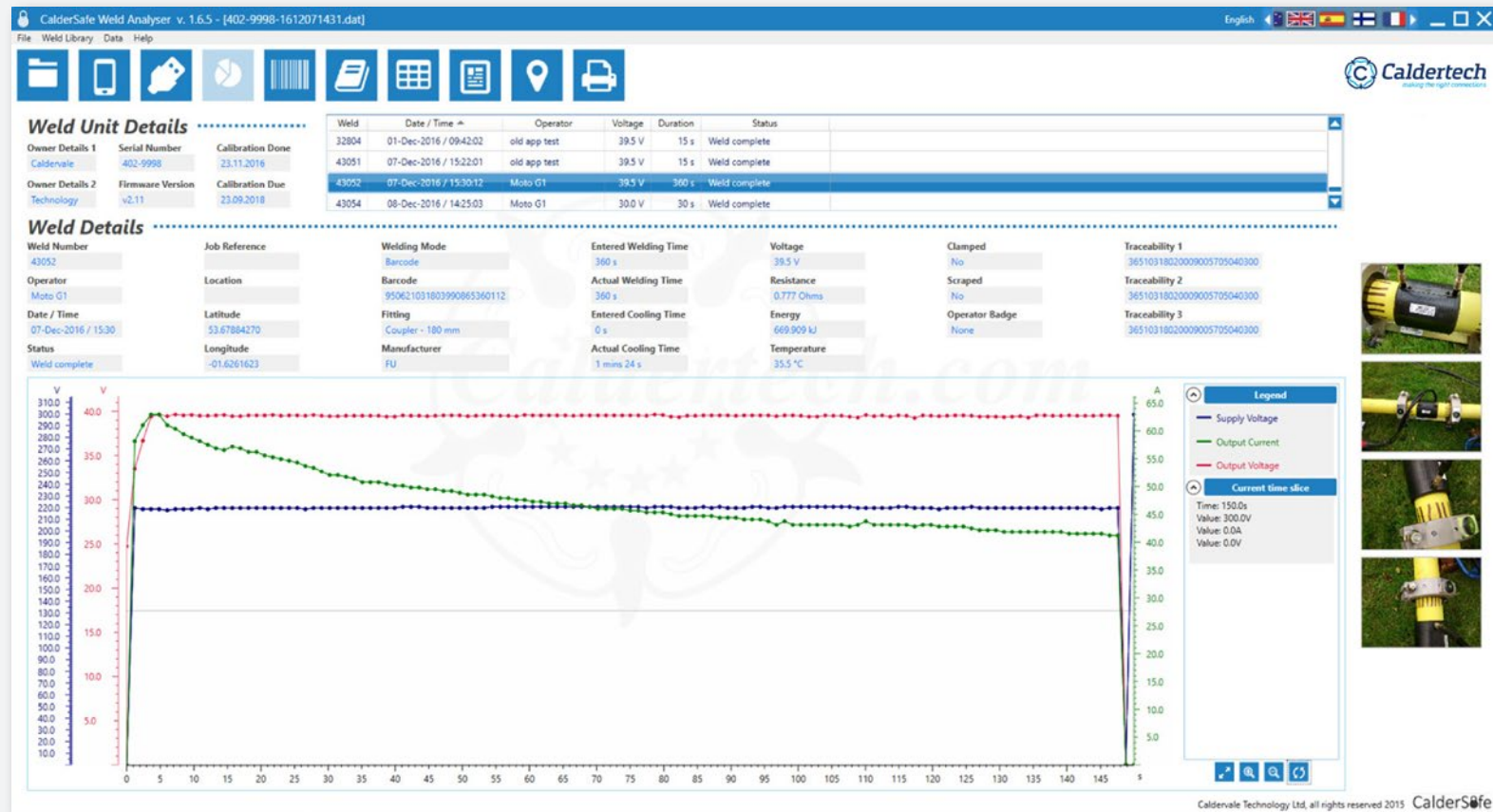
Double click attachment to open data



Obtain the CalderSafe® Weld Analyser only from Caldervale Technology

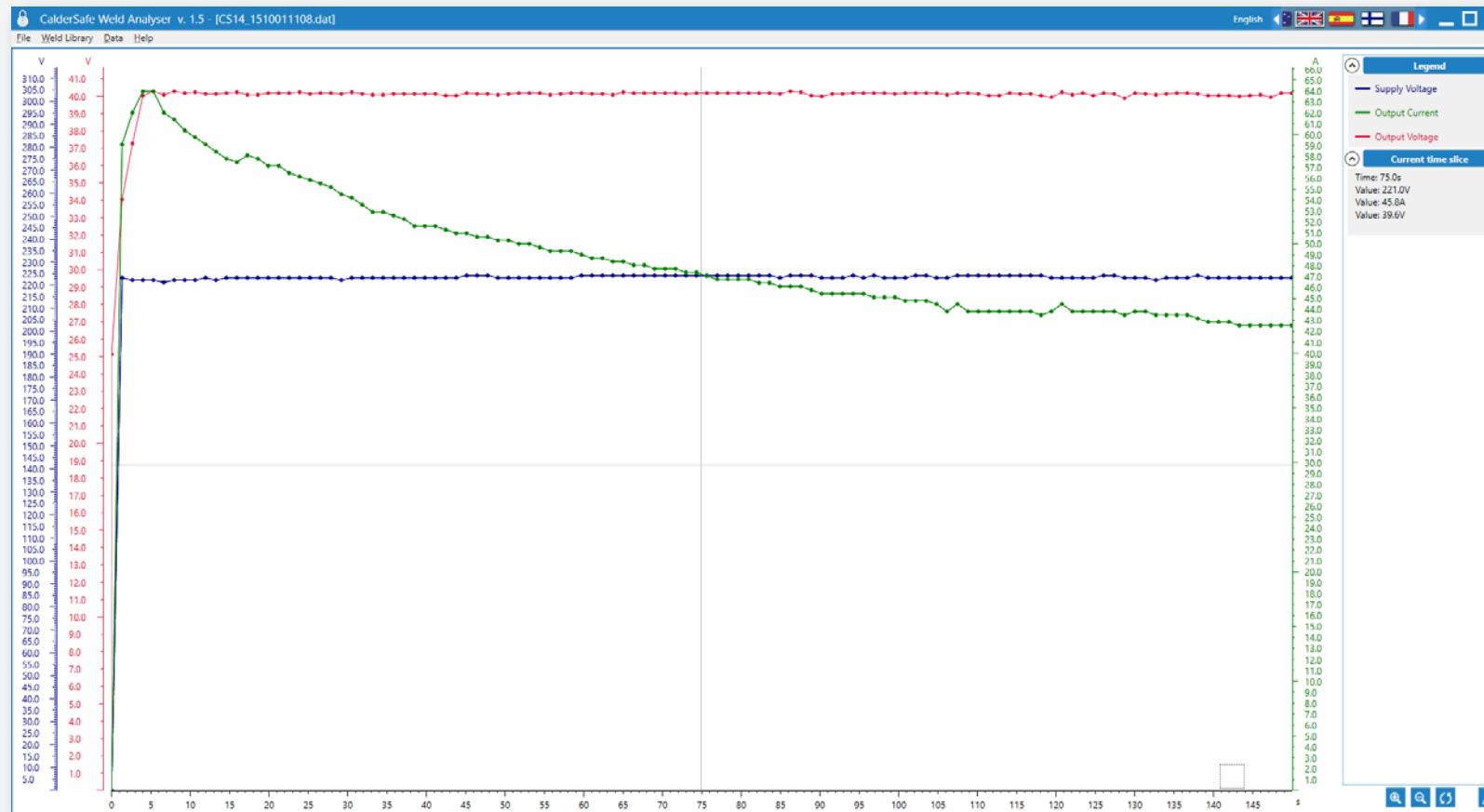
Weld Analyser

Graph with 124 point data plot of Supply Voltage, Output Voltage and Output Current.



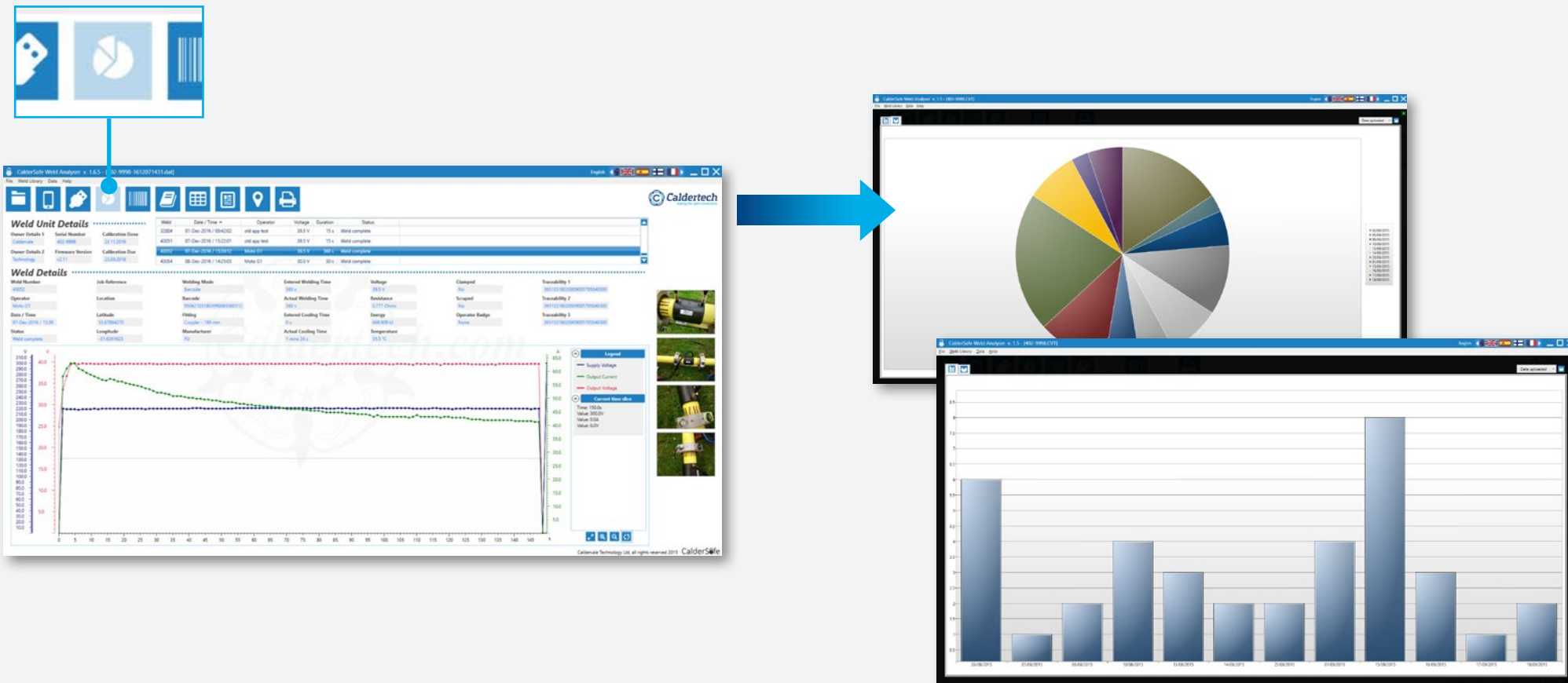
Weld Analyser

Graph can be shown in full screen mode.



Weld Analyser

Mass data can be analysed through pie charts and bar charts.



Get the App

Find the CalderSafe Android app on the Google Play Store®





Contact Us

For more information contact:
info@caldertech.com

