

**Qty. Description**

1 Unilift KP 250 M 1



**Note! Product picture may differ from actual product**

Product No.: On request  
Submersible drainage pump

Vertical single-stage stainless steel submersible pump with vertical discharge port and integrated Phase: submersible 1-phase canned motor in insulation class F with thermal overload protection.

The pump is fitted with a suction strainer, a Cable length: carrying handle and is supplied with a 5 m mains cable.

The impeller is a semi-open impeller for 10 mm free passage suitable for pumping groundwater, surface water, rain water and similar liquids.

The pump has a double shaft seal consisting of two lip seals with grease in-between.

The pump has an outer casing ensuring continuous cooling of the motor by the pumped liquid. The rotor shaft operates in two maintenance-free carbon bearings cooled by the pumped liquid

The motor is filled with a non-toxic motor liquid.

Liquid:  
Pumped liquid: Any Newtonian liquid  
Liquid temperature range: 0 .. 50 °C  
Density: 998.2 kg/m<sup>3</sup>

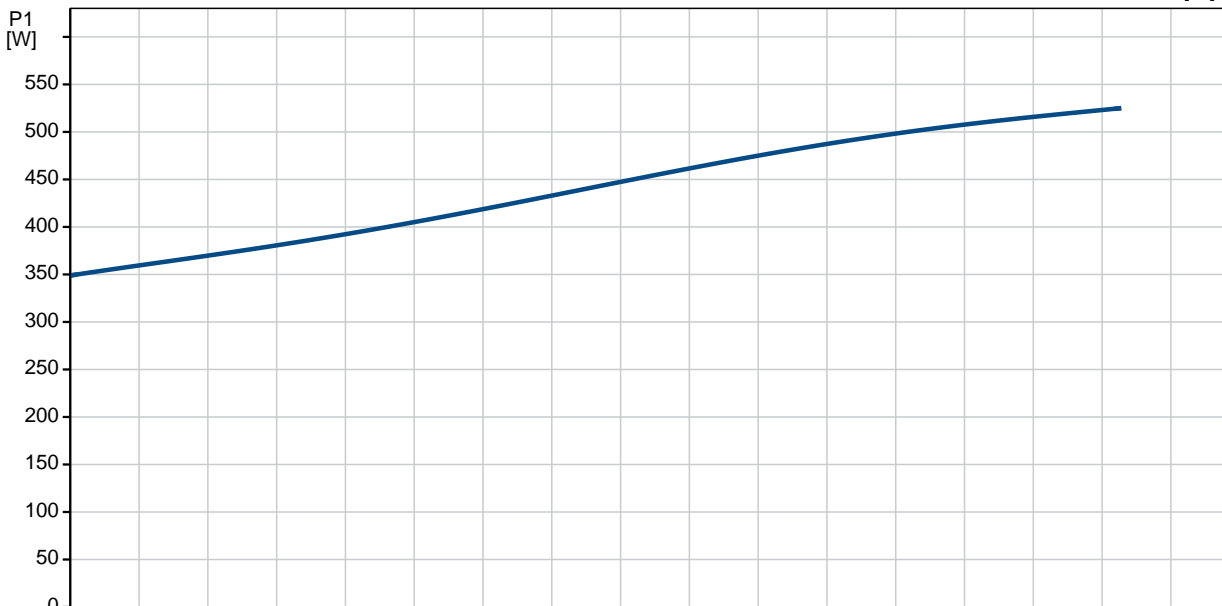
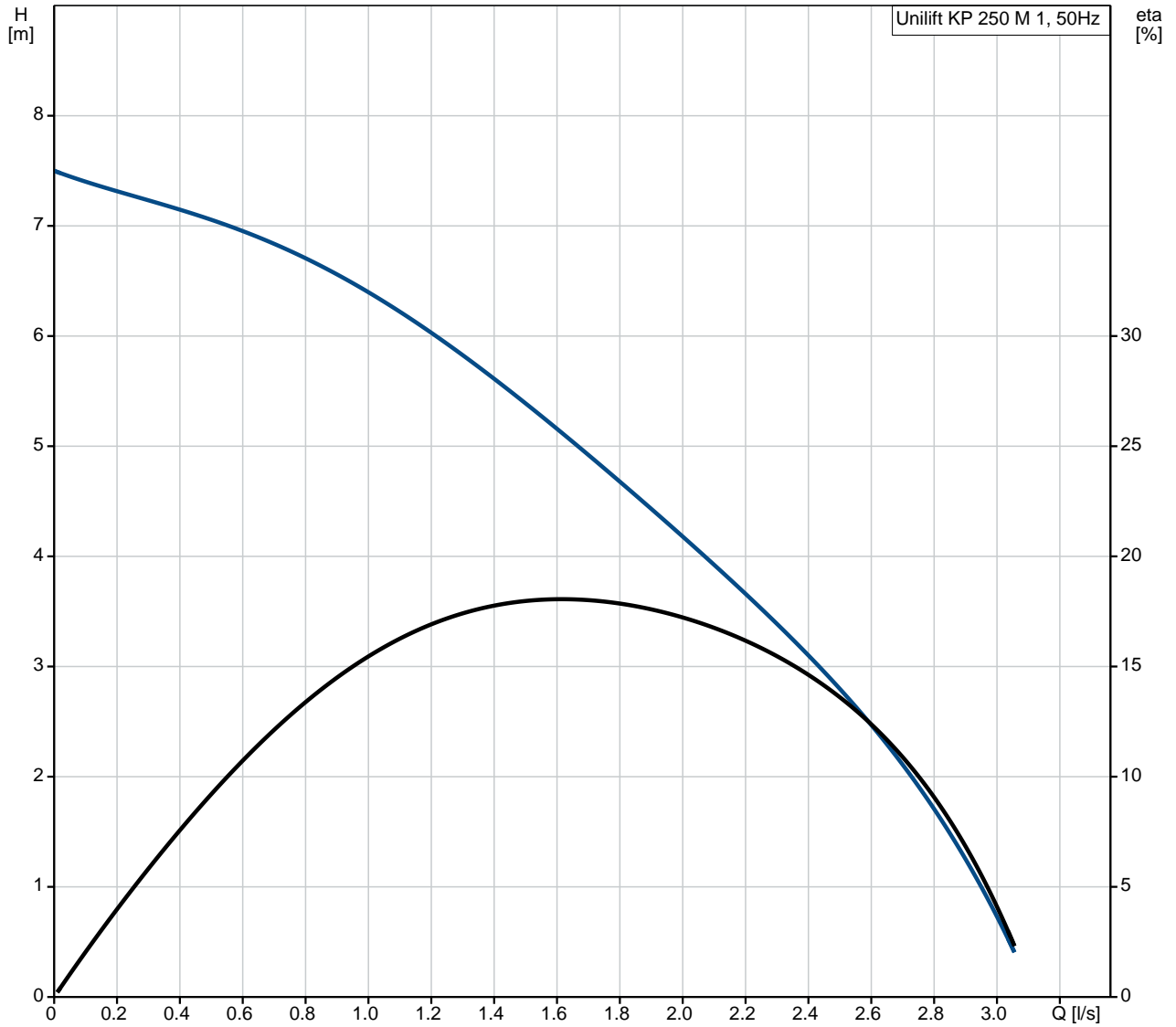
Technical:  
Maximum particle size: 10 mm

Materials:  
Pump housing: Stainless steel  
DIN W.-Nr. 1.4301  
AISI 304

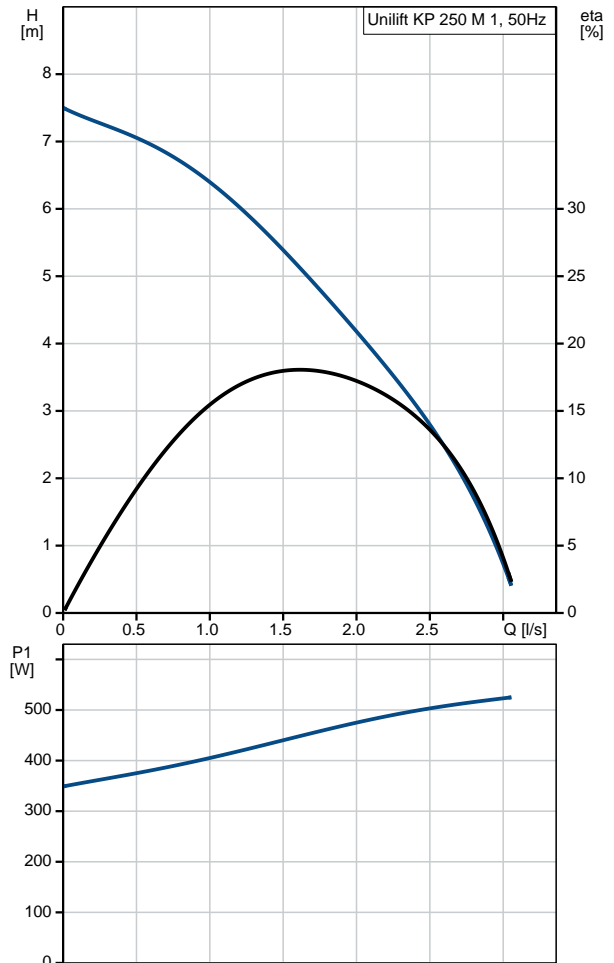
Impeller: Stainless steel  
DIN W.-Nr. 1.4031

Qty.	Description
	AISI 304
	Installation:
	Pump outlet: Rp 1 1/4
	Maximum installation depth: 2 m
	Electrical data:
	Power input - P1: 480 W
	Mains frequency: 50 Hz
	Rated voltage: 1 x 230-240 V
	Rated current: 2.2 A
	Capacitor size - run: 8 µF/400 V
	Enclosure class (IEC 34-5): IP68
	Insulation class (IEC 85): F
	Length of cable: 5 m
	Type of cable plug: NONE
	Others:
	Net weight: 6.5 kg
	Gross weight: 7 kg
	Shipping volume: 0.013 m <sup>3</sup>

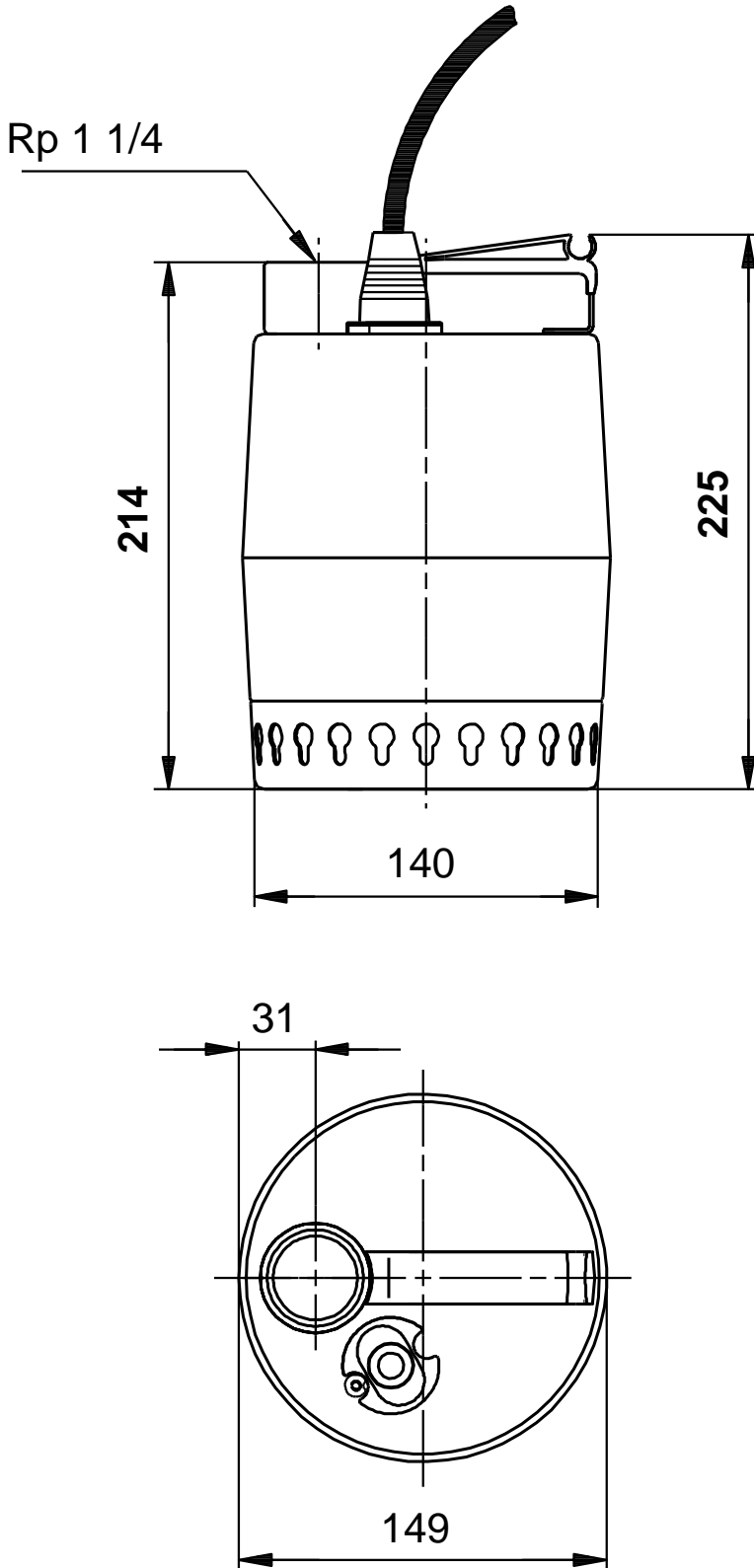
## On request Unilift KP 250 M 1 50 Hz



Description	Value
<b>General information:</b>	
Product name:	Unilift KP 250 M 1
Product No:	On request
EAN number:	On request
Price:	
<b>Technical:</b>	
Maximum flow:	3.11 l/s
Max flow:	3.11 l/s
Head max:	7.5 m
Maximum particle size:	10 mm
Model:	A
<b>Materials:</b>	
Pump housing:	Stainless steel
Pump housing:	DIN W.-Nr. 1.4301
Pump housing:	AISI 304
Impeller:	Stainless steel
Impeller:	DIN W.-Nr. 1.4031
Impeller:	AISI 304
<b>Installation:</b>	
Pump outlet:	Rp 1 1/4
Maximum installation depth:	2 m
<b>Liquid:</b>	
Pumped liquid:	Any Newtonian liquid
Liquid temperature range:	0 .. 50 °C
Density:	998.2 kg/m <sup>3</sup>
<b>Electrical data:</b>	
Power input - P1:	480 W
Mains frequency:	50 Hz
Rated voltage:	1 x 230-240 V
Rated current:	2.2 A
Capacitor size - run:	8 µF/400 V
Enclosure class (IEC 34-5):	IP68
Insulation class (IEC 85):	F
Motor protec:	CONTACT
Thermal protec:	internal
Length of cable:	5 m
Type of cable plug:	NONE
<b>Others:</b>	
Net weight:	6.5 kg
Gross weight:	7 kg
Shipping volume:	0.013 m <sup>3</sup>

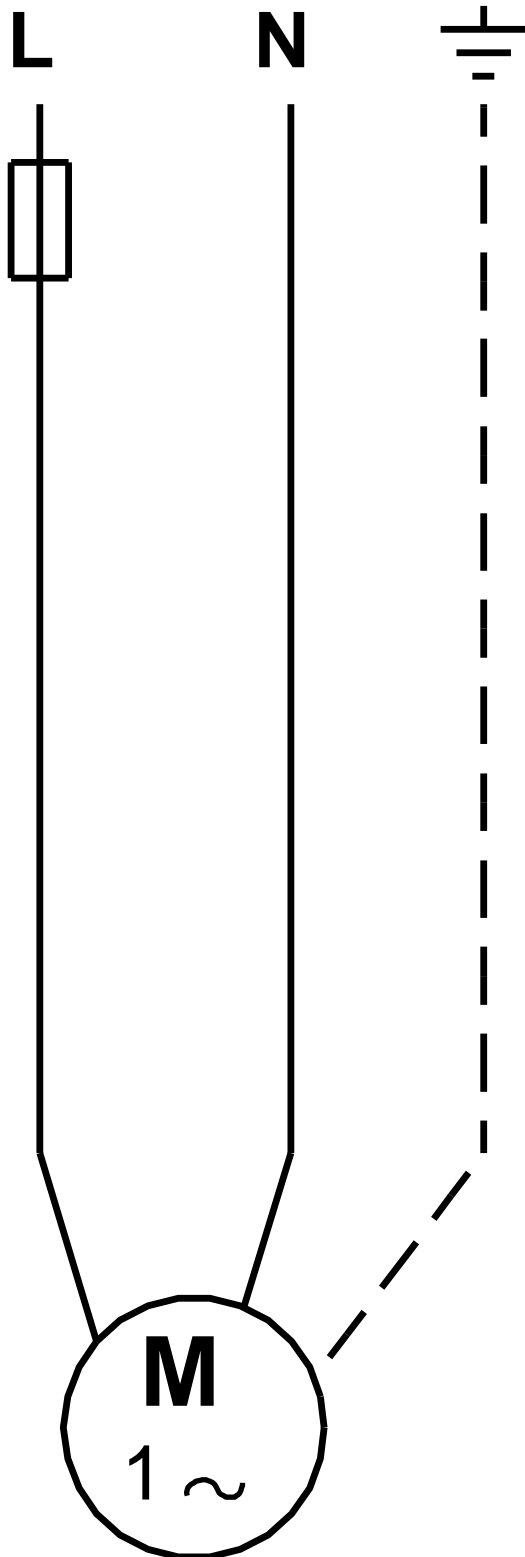


**On request Unilift KP 250 M 1 50 Hz**



Note! All units are in [mm] unless others are stated.  
Disclaimer: This simplified dimensional drawing does not show all details.

**On request Unilift KP 250 M 1 50 Hz**



Note! All units are in [mm] unless others are stated.