

Qty. Description

1 UNILIFT CC9 - A1



Note! Product picture may differ from actual product

Product No.: On request

Grundfos Unilift CC pumps are single-stage submersible pumps with a low suction ability down to 3 mm water level.

The pumps are designed for pumping rainwater and grey wastewater, e.g. from

- washing machines, baths, sinks, etc. from low-lying parts of buildings up to sewer level
- cellars or buildings prone to flooding
- draining wells
- wells for surface water with inlets from roof gutters, pits, tunnels, etc.
- swimming pools, ponds or fountains.

The pumps are suitable for both stationary and portable use.

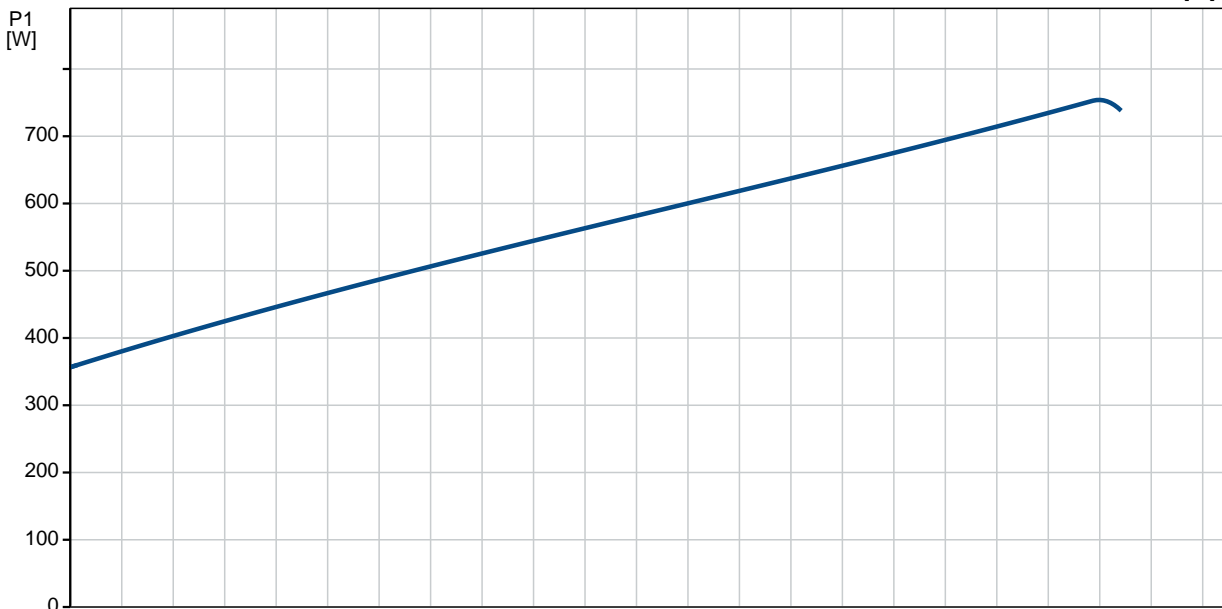
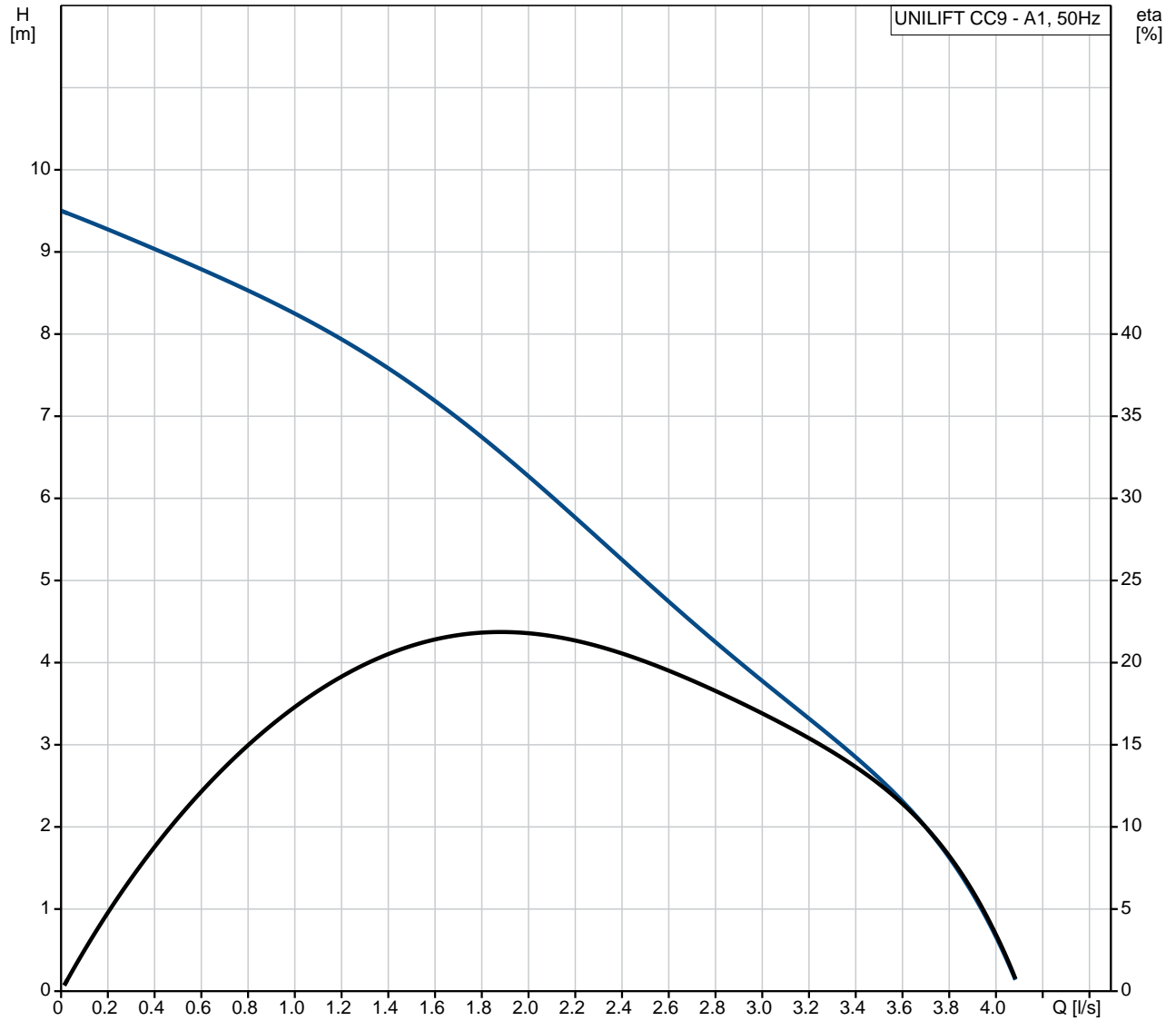
They are for automatic operation.

The pumps allow free passage of particles up to $\varnothing 10$ mm.

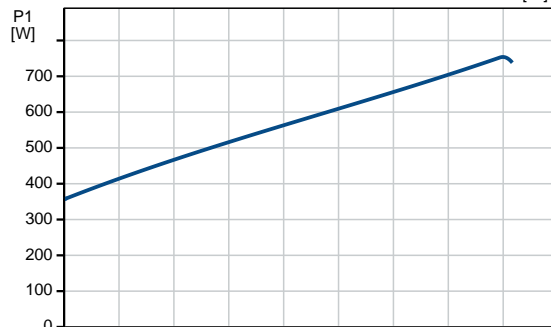
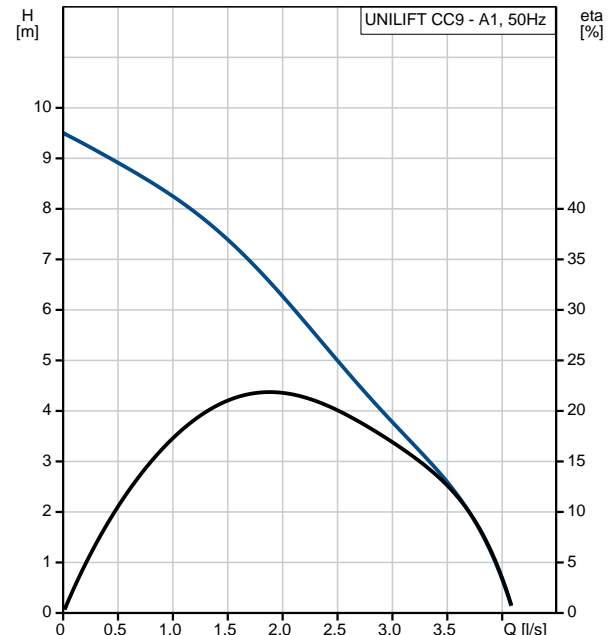
The motor incorporates automatic overload protection cutting out the motor in case of overload.

When cooled to normal temperature, the motor restarts automatically.

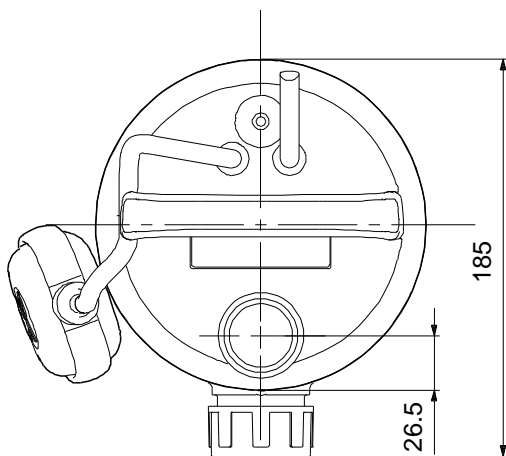
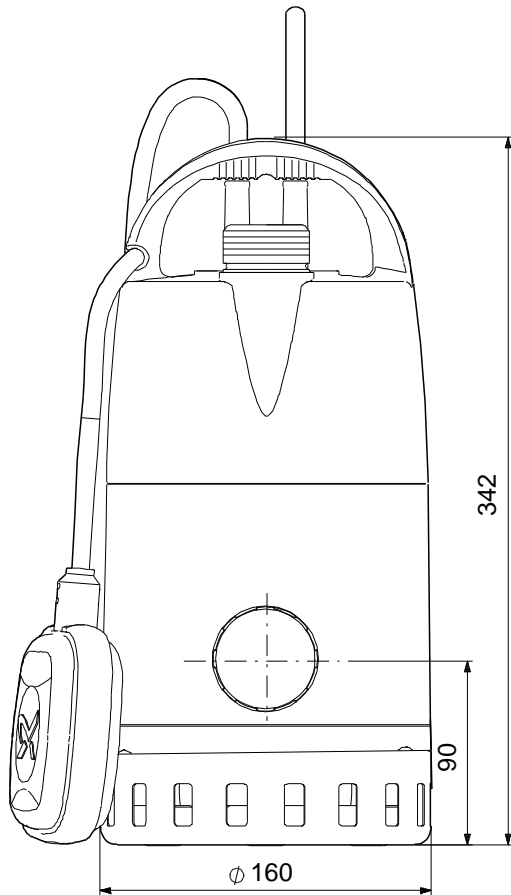
On request UNILIFT CC9 - A1 50 Hz



Description	Value
General information:	
Product name:	UNILIFT CC9 - A1
Product No:	On request
EAN number:	On request
Price:	
Technical:	
Maximum flow:	3.89 l/s
Max flow:	3.89 l/s
Head max:	9 m
Maximum particle size:	10 mm
Materials:	
Pump housing:	PP 15 GF
Impeller:	PPOm 20 GF
Shaft:	Stainless steel
Shaft:	EN 1.4301
Shaft:	AISI 304
Motor:	Stainless steel
Motor:	EN 1.4301
Motor:	AISI 304
Installation:	
Pump outlet:	R 1 1/4
Maximum installation depth:	10 m
Liquid:	
Pumped liquid:	Any Newtonian liquid
Liquid temperature range:	0 .. 40 °C
Density:	998.2 kg/m ³
Electrical data:	
Mains frequency:	50 Hz
Rated voltage:	1 x 220-240 V
Rated current:	3.5 A
Capacitor size - run:	8 µF/450 V
Enclosure class (IEC 34-5):	IP68
Insulation class (IEC 85):	B
Motor protec:	YES
Length of cable:	10 m
Type of cable plug:	NONE
Controls:	
Level switch:	float switch
Others:	
Net weight:	6.79 kg
Gross weight:	7.55 kg
Shipping volume:	0.017 m ³

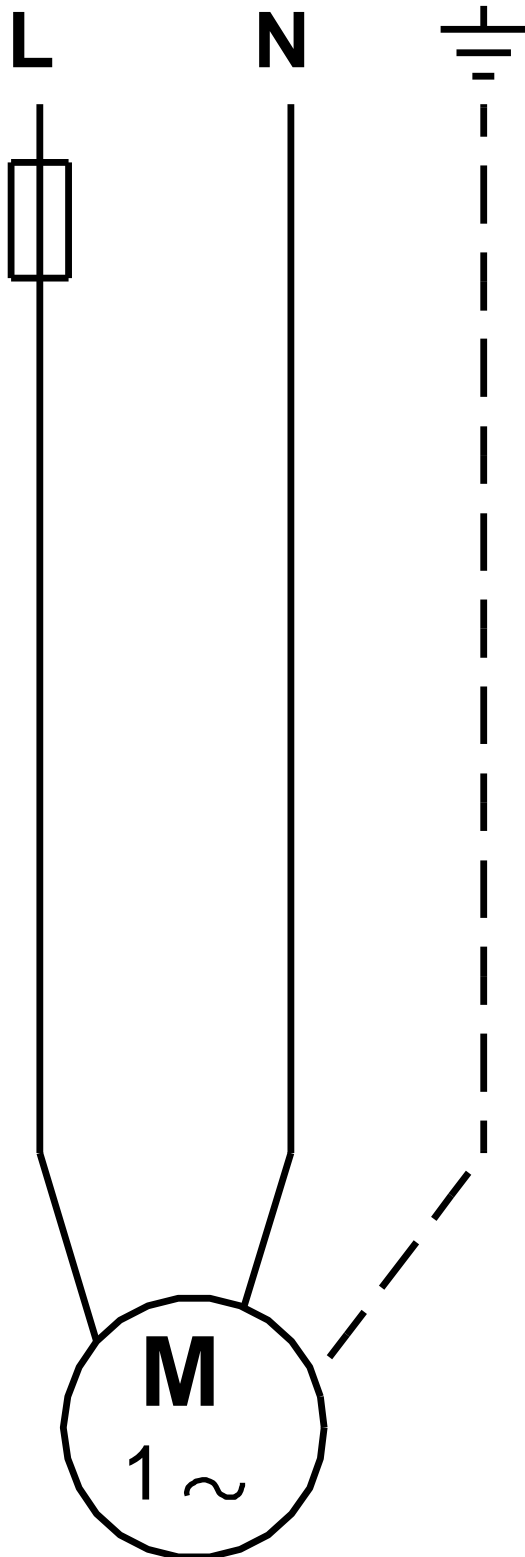


On request UNILIFT CC9 - A1 50 Hz



Note! All units are in [mm] unless others are stated.
Disclaimer: This simplified dimensional drawing does not show all details.

On request UNILIFT CC9 - A1 50 Hz



Note! All units are in [mm] unless others are stated.